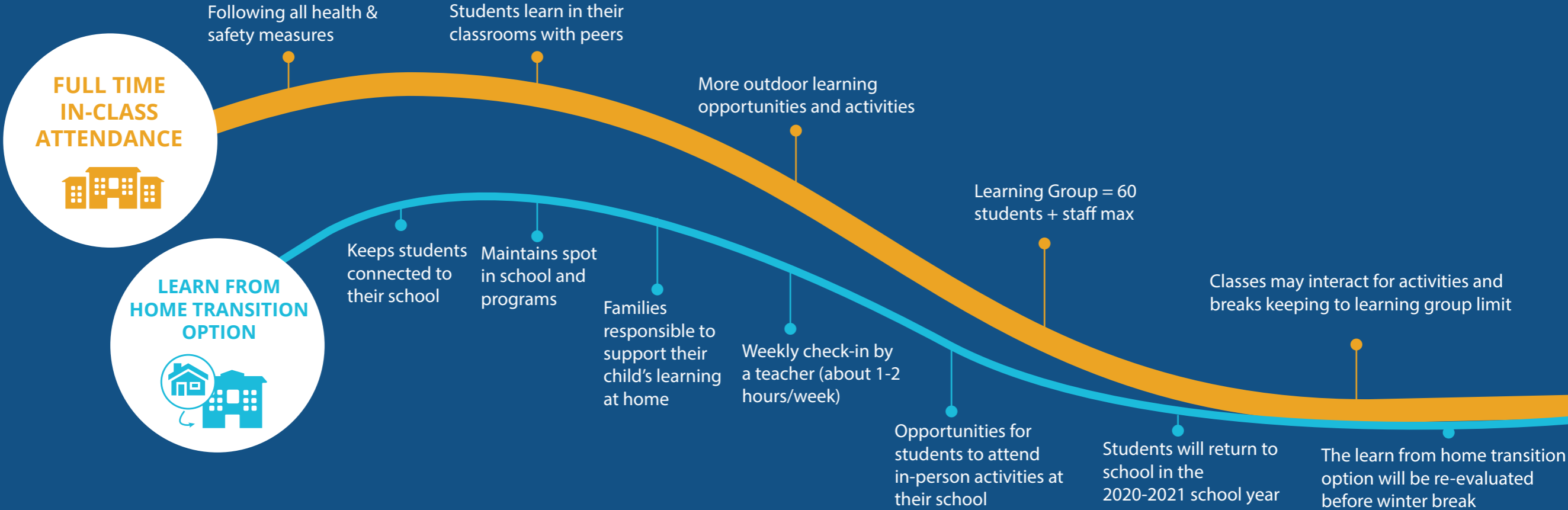


ELEMENTARY SCHOOL RETURN OPTIONS



DISTRIBUTED LEARNING

- Families are the home facilitator in their child's education. A teacher provides program material, assesses students' work and provides feedback.
- Students supervised at home while following the BC curriculum.
- Children do not attend a school's classes or activities
- Students must register

HOME SCHOOL

- Full educational program is done at home, usually with the family assuming full responsibility for their child's learning
- Families must inform their school of their decision to home school
- There are no assignments or assessments from teachers

HOME BOUND EDUCATION

- This educational program is for students who are unable to attend school due to a medical condition.
- A student must be diagnosed by a doctor and have a letter from the medical practitioner making the diagnosis.
- Families can contact their school principal for more information.