

SPECIAL BOARD MEETING

AGENDA

1. CALL MEETING TO ORDER

1.1 INDIGENOUS LAND ACKNOWLEDGEMENT

We are unlearning and relearning on the traditional and unceded lands of the x^wməθk^wəyəm (Musqueam), Sk̓wx̓wú7mesh (Squamish) and səliłwətał (Tsleil-Waututh) Nations.

1.2 OPENING REMARKS

The meeting is being live-streamed and the audio and visual recording will also be available to the public for viewing after the meeting. The footage of the meeting may be viewed inside and outside of Canada.

2. DELEGATIONS

Delegations are estimated to begin approximately at 5:00 PM.

2.1 Delegations re the *What We Heard* engagement report on the proposed closure of Queen Elizabeth Annex:

- 2.1.1 Nightingale Parent Advisory Council (PAC), Solomon Wong
- 2.1.2 Karen Tsang
- 2.1.3 Lia Gudaitis
- 2.1.4 Jules Quesnel Parent Advisory Committee (PAC), Kate Hood
- 2.1.5 Michael Hooper
- 2.1.6 Eleanor Reardon
- 2.1.7 Julia Lockhart
- 2.1.8 Vik Khanna
- 2.1.9 Rick Yoo
- 2.1.10 Chin Sun
- 2.1.11 Luis Alberto Enriquez
- 2.1.12 John Oliver PAC, Samantha Anderson
- 2.1.13 Christine Bowden
- 2.1.14 Judy Yanchuk
- 2.1.15 Rebecca Pitfield

3. ADJOURNMENT

VANCOUVER SCHOOL DISTRICT SPECIAL BOARD MEETING

June 2, 2022



INDIGENOUS ACKNOWLEDGEMENT

Please join me in acknowledging that we are unlearning and relearning
on the traditional and unceded lands of the
x^wməθk^wəyəm (Musqueam), S_kwxwú7mesh (Squamish), and səliłwətał (Tseil-Waututh) Nations



x^wməθk^wəyəm
(Musqueam)



S_kwxwú7mesh
(Squamish)



səliłwətał
(Tseil-Waututh)

Live Streaming & Recordings

The meeting is being live-streamed and the audio and visual recording will also be available to the public for viewing after the meeting.

The footage of the meeting may be viewed inside and outside of Canada.

Meeting Decorum

It is our Board's responsibility to ensure that our meetings are conducted in a safe and respectful manner.

As a Board of Education for a school district, it is important that we model the behavior that we expect of students in their schools.

Roll Call

ITEM 2

Delegations

ITEM 2.1.1 Delegation

Nightingale Parent Advisory Council (PAC),
Solomon Wong

ITEM 2.1.2 Delegation

Karen Tsang

ITEM 2.1.3 Delegation

Lia Gudaitis



An alternative to closing schools

A win-win solution for CSF and VSB is possible

Lia Gudaitis, Presentation to Special Board Meeting

June 2nd 2022



Two points:

1. There are win-win alternatives for a CSF school -- better for CSF, MoE and VSB
2. 21 schools have been identified for disposition -- create a 30-year plan now before closing any schools

What criteria are essential to evaluate options for a CSF school site?

- ❑ Size meets need for 435 students (2.4 ha)
- ❑ Location provides access to major roads / transport for buses
- ❑ Does not displace current students
- ❑ Avoids heavy impacts on neighbourhoods (e.g. traffic/access)
- ❑ Provides benefit to both CSF and VSB impacted students

QEA

Size meets need for 435 students (2.4 ha)

Table 3: Project Objectives and Criteria

Project Objective	Criteria
Adequate capacity to meet demand, in accordance with Ministry requirements	a) Provides CSF capacity to accommodate 435 kindergarten to grade six students within the required catchment area

A standard site for a 435-student elementary school would be 2.4 ha.

Student Capacity	Site Size (ha)
400	2.3
450	2.5

QEA is located on a 1.5 ha site at 4275 Crown St in the Dunbar-Southlands neighborhood



Ministry of Education



MINISTRY OF EDUCATION
OPTIONS ANALYSIS

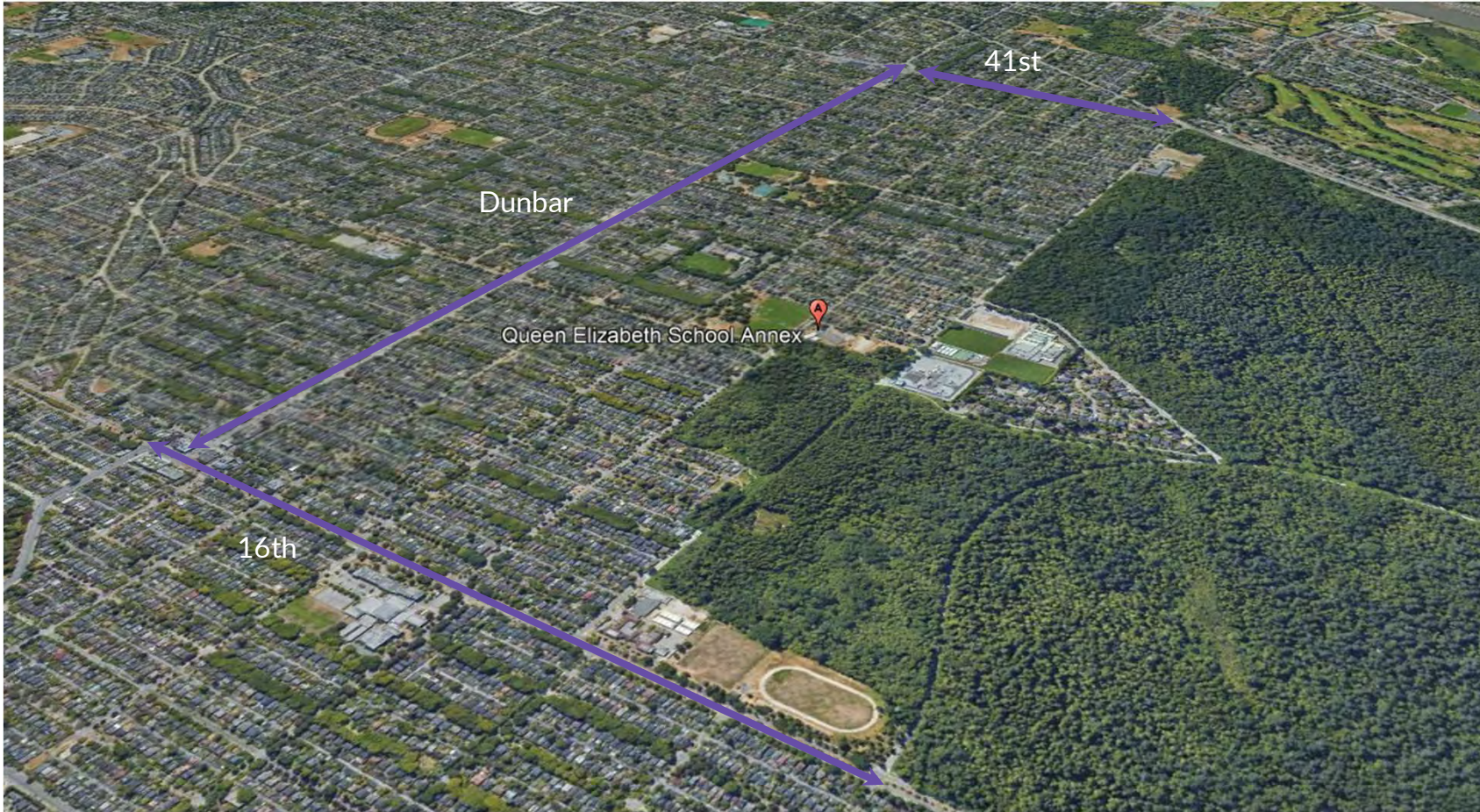
APRIL 27, 2018

partnerships
British Columbia

Source: Ministry of Education Options Analysis, April 27, 2018

QEA

X Location provides access to major roads / transport for buses



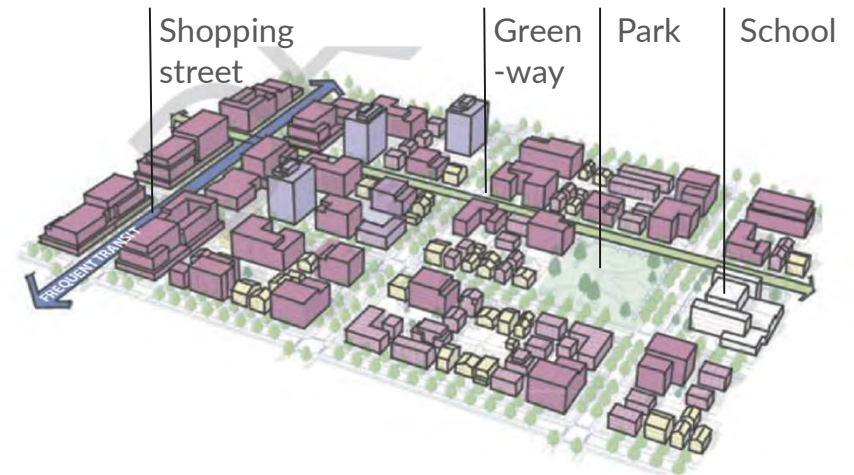
QEA

- ✗ Does not displace current students
- ✗ Avoids heavy impacts on neighbourhoods (e.g. traffic/access)
- ✗ Provides benefit to both CSF and VSB impacted students



● Where CSF students lived 2012-2013 (no recent data available)
■ QEA

Source: Submissions of the CSF for MoE Funding Allocation System Review, 2018



QEA is a public school that has adapted to the needs of Dunbar Village that everyone can access: English, French Immersion, etc. CSF are public schools with limited access (i.e. only children of francophone parents)

An alternative site: Prince of Wales



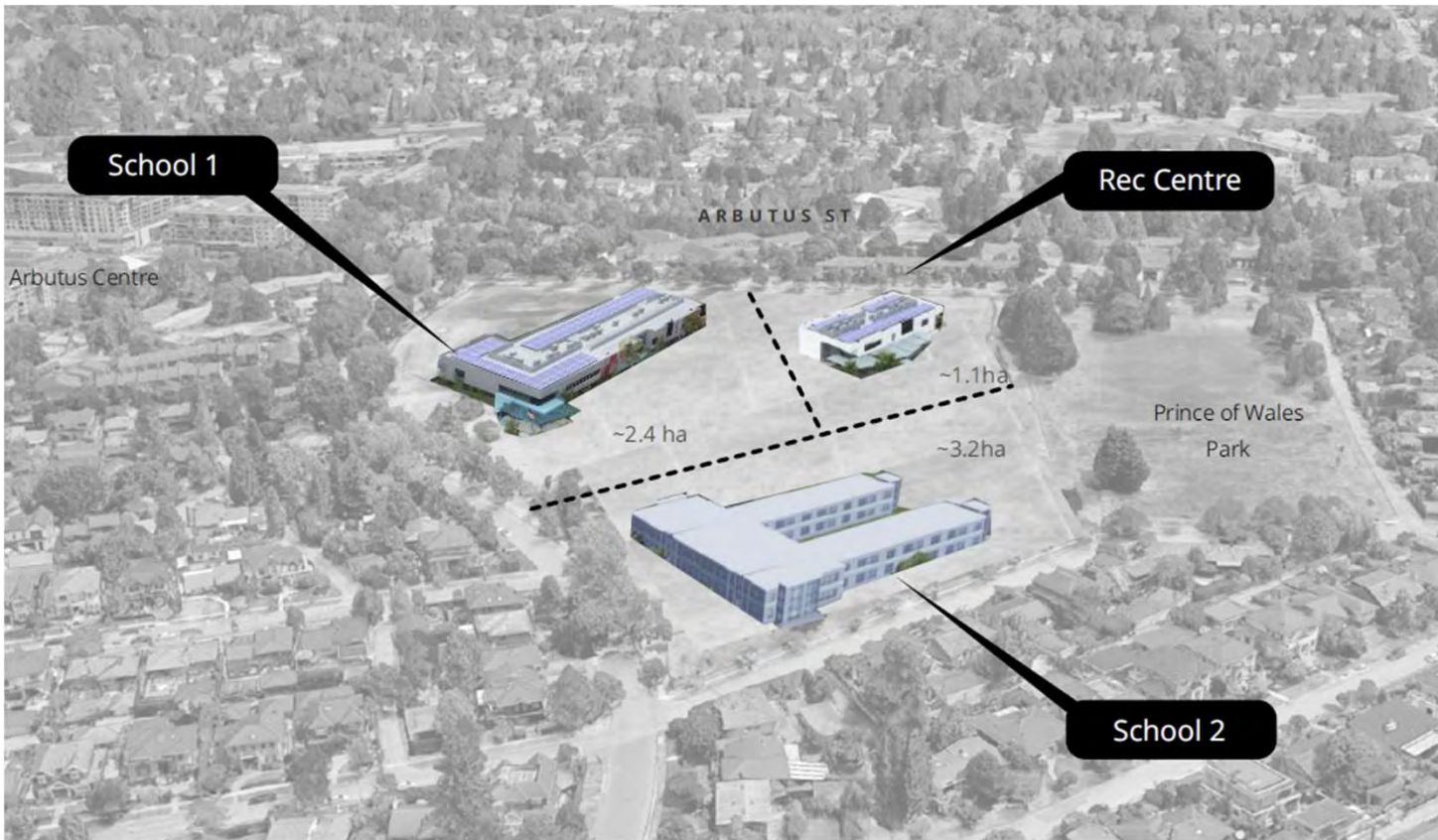
Prince of Wales Secondary
(current 6,7 ha site)

Prince of Wales Mini

Prince of Wales Park
(Parks Board)

- Currently unsupported for seismic upgrade, and listed in LRFP as site for “consolidation”
- 6.7-10 ha site
- A new school would benefit PoW students by providing safe seats and avoid school closure

Credit: DPAC Facilities Committee



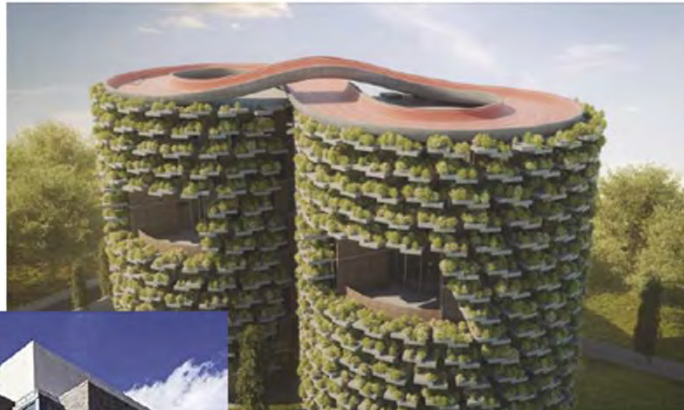
Option: Separate facilities

- Room for 2 schools and community facilities (e.g. rec centre, child care centre, etc).

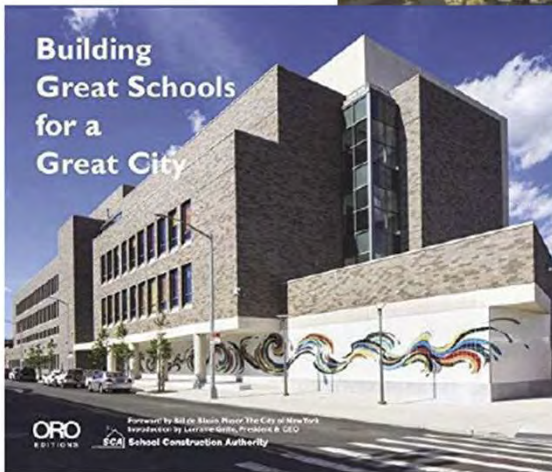
Note: Concept illustration only: not to scale. Recreation Centre could also be another community facility.

Credit: DPAC Facilities Committee

Sustainability



Think: Future



Shared and flexible space



Toronto's Canoe Landing Centre breaks ground

Tuesday, October 3, 2017

Construction has officially started on the Canoe Landing Centre, a multi-use facility located on the site formerly known as Block 31, at the corner of Fort York Boulevard and Brunel Court in Toronto's CityPlace neighbourhood.

Toronto's Canoe Landing:

- 2 schools for 1100 children
- Community centre
- Child care centre

Credit: DPAC Facilities Committee

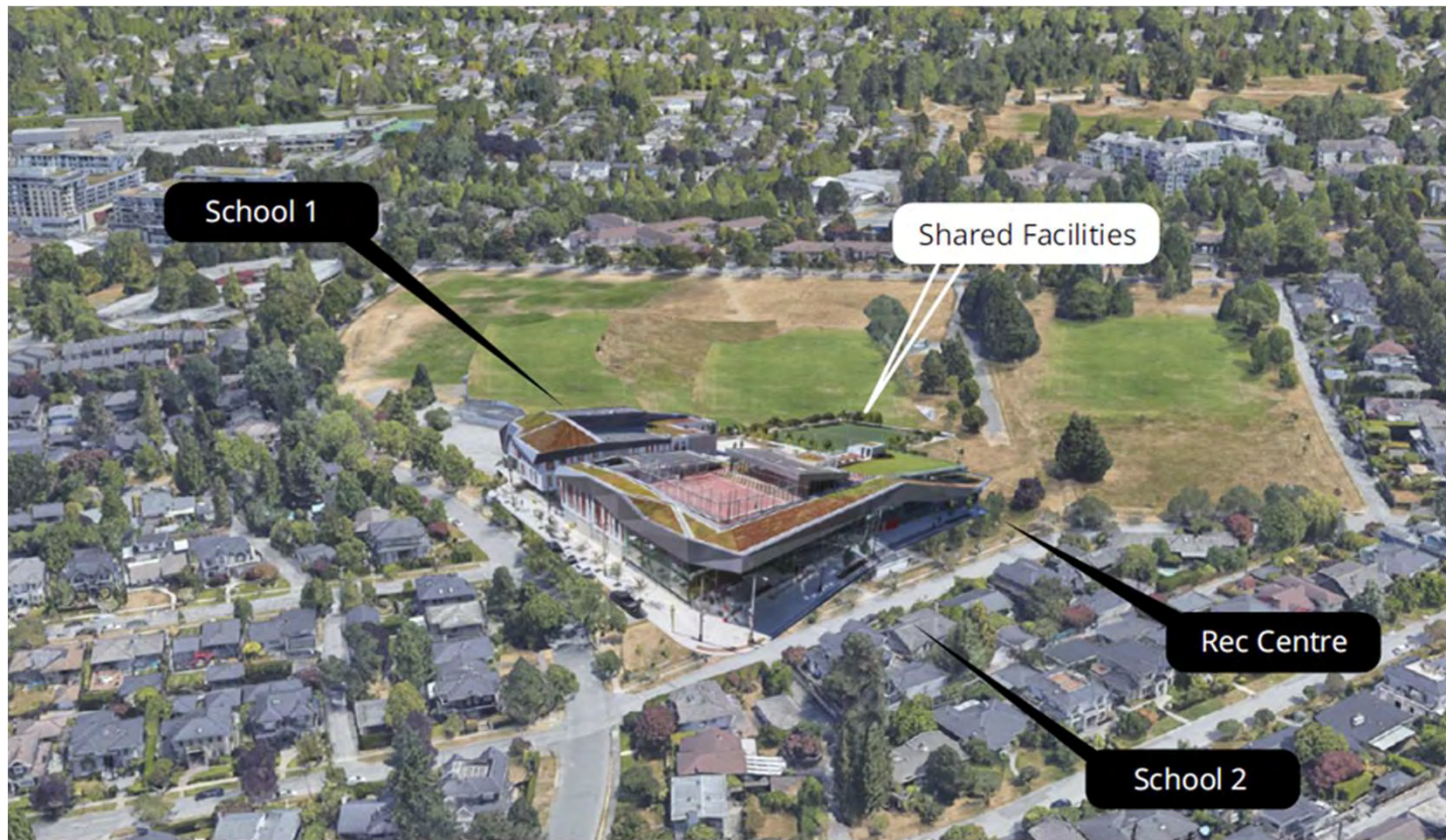


Option: Multi- Program Model

Using
Toronto/Canoe
Landing Model

Note: Concept illustration only: not to scale.

Credit: DPAC Facilities Committee



Option: Multi- Program Model

Using
Toronto/Canoe
Landing Model

Note: Concept illustration only: not to scale.

Credit: DPAC Facilities Committee

PoW

- ✓ Size meets need for 435 students (2.4 ha)
- ✓ Location provides access to major roads / transport for buses
- ✓ Does not displace current students
- ✓ Avoids heavy impacts on neighbourhoods (e.g. traffic/access)
- ✓ Provides benefit to CSF and VSB impacted students

We will need creative solutions and partnerships to solve the school crisis

21 Schools identified for “disposition” in VSB Land Asset Strategy



consideration as potential surplus sites. As a result, the project team identified 60 Sites for possible disposition, encompassing approximately 81 ha (with minor site subdivisions) of fee simple land in the City of Vancouver. These lands were then categorized by their principal uses, which generally include:

- Non-Enrolling Sites (4)
- Closed Annexes (5)
- Minor Site Subdivisions (26)
- Partnership & Planning (4)
- Annexes/Alternate Programs (8)
- Consolidations & Closures (13)

Source: VSB Land Asset Strategy, April 2022

It is important now more than ever:

*-> Make a transparent 30-year plan for schools,
before closing any schools or selling land*

*-> Find a CSF site that's a win-win for CSF and VSB
directly impacted students*



Thank you

Rally to save QEA, May 30th 2022

ITEM 2.1.4 Delegation

Jules Quesnel Parent Advisory Committee
(PAC), Kate Hood


ITEM 2.1.5 Delegation

Michael Hooper



**Due process and public engagement in VSB school
closures and land disposals**


Michael Hooper
Associate Professor
School of Community and Regional Planning
UBC





VSU Policy 14 requires public meetings for school closures

*“4. The Board will review the recommendations from the Facilities Planning Committee and either 4.1 Conclude that no action or further study is required, or 4.2 Initiate a public consultation process by passing a motion at a **public meeting** of the Board.”*

- Meeting on Jan 17 called with zero full business days notice
 - No notice to community, beyond email from Vice Principal at close of business on preceding Friday
 - No public participation at all allowed in the meeting
 - **Clearly violates Policy 14**
- 




VSBC Policy 14 requires public meetings for school closures

“8. Once a school closure public consultation process has been initiated, at least one (1) **public consultation meeting** will be held to **discuss** the proposed closure.”

- No discussion possible at community dialogue sessions
- Participants listened muted to 20-minute presentation on why school closures should happen
- Unmuted briefly in small break out rooms, with no VSBC staff present
- Journalists barred and deregistered from meetings
- **Again, clearly violates Policy 14**


Failure to satisfy Policy 14 is now the subject of a formal complaint to BC Ombudsperson





VSF engagement failed to adhere to IAP2 Code of Ethics

The VSB engagement process violated all elements of the IAP2 Code of Ethics, to provide just a few examples:

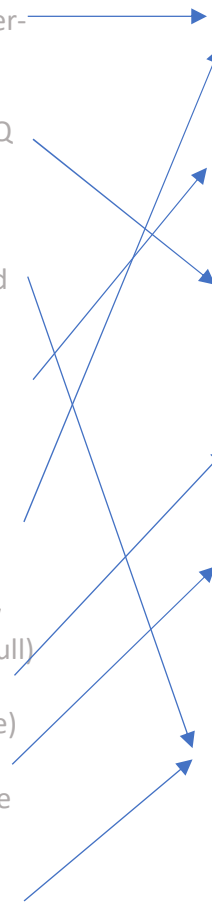
- **Failed to be responsive** to public concerns
 - **Failed to be open**, by drawing on secret and manipulated data
 - Explicitly **pitted communities against each other** in divide and conquer tactic
 - Explicitly **engineered survey design** in favour of closure (design made it virtually impossible not to support closure)
- 

VSBS arguments for closure

1. Costs are high (but based on VSBS strategic under-enrollment)
2. Maintain French immersion (despite move to JQ resulting in 0.5-1 class reduction in French Immersion kindergarten intakes)
3. Reduce transitions (although move to QE would retain need to transition)
4. Keep schools in preferred size range (which if used as justification puts 40+ schools at risk of closure)
5. Add resources (unclear how adding more students to another school would increase resources, since VSBS argument is that QEA now has too many resources per student and JQ is full)
6. Seismic stability (despite QE being no more safe)
7. To fund other schools (a terrible idea in absence of a real long-term plan)
8. To build school community by adding to larger


Responses to survey question 3

- a. To be fiscally responsible and prioritize funding for student programs and services
- b. To be fiscally responsible and ensure funding is balanced among all students
- c. To support student learning by maintaining the French immersion program
- d. To have more students in seismically safe schools
- e. To potentially generate capital funds for the District that would be used to support building new schools where they are needed and/or enhancing seismic upgrades to existing schools
- f. To ensure a strong sense of school community is maintained in making any decisions about school facilities





Rushed timeline failed to satisfy Policy 14, acknowledge pandemic setting or address reconciliation

- Rushed engagement did not last full 60 days
 - Pushed families and a community to the brink – after Janet Fraser promised in 2019 this matter would not be reopened
 - Failed to robustly engage First Nations. In contrast with VSB’s rhetoric on reconciliation, engagement with Musqueam involved: “Letter sent April 5...Musqueam did not reply.”
 - Ultimately, process failed to satisfy due process and meet professional standards for engagement
 - VSB trustees should vote not to close QEA and not set such an appallingly low standard for process and engagement around school closure or any other issue of public interest
- 

ITEM 2.1.6

Delegation

Eleanor Reardon

ITEM 2.1.7 Delegation

Julia Lockhart

ITEM 2.1.8 Delegation

Vik Khanna

ITEM 2.1.9 Delegation

Rick Yoo

**Vote No to Closing
QEA**

Vote No to Closing QEA

A large percentage of VSB staff
responded to the survey

Vote No to Closing QEA

No participants at the community
dialogue sessions voiced support for
the QEA closure

Vote No to Closing QEA

Survey multiple choice answers lacked
opposition choices to closing QEA

Vote No to Closing QEA

Support/Oppose percentages used to
quantify comments are misleading

ITEM 2.1.10

Delegation

Chin Sun

Three challenges confronting VSB that contributed to the proposed QEA closure

(1) higher per student costs for QEA

(2) QEA Facilities not Seismic upgraded, a liability

(3) Ongoing legal proceeding with Francophone School Board, which wants to lease QEA for its school facilities.

What is the **time frame for VSB trustee and committee's planning and visions?**

Closing down QEA addresses the **immediate budgetary concerns.**

Education: a **long term investment on our children**

**You are entrusted to look after the education of our children
Should take a long term perspective when planning and visioning**



39 Vancouver

Year	Kinder- garten	Grade							Elem. Ungr.	Elem. Subtotal	Grade					Sec. Ungr.	Sec. Subtotal	All Grades Subtotal	Home School	Grand Total	Yearly % Change
		1	2	3	4	5	6	7			8	9	10	11	12						
2014	3,746	3,801	3,740	3,572	3,587	3,445	3,506	3,559	0	28,956	3,660	4,092	4,097	4,198	4,512	165	20,724	49,680	27	49,707	
2015	3,572	3,717	3,736	3,711	3,526	3,608	3,457	3,517	1	28,845	3,723	3,694	4,194	4,240	4,252	180	20,283	49,128	28	49,156	-1.11%
2016	3,670	3,535	3,655	3,689	3,668	3,542	3,607	3,507	0	28,873	3,645	3,777	3,813	4,303	4,366	109	20,013	48,886	31	48,917	-0.49%
2017	3,630	3,628	3,463	3,649	3,664	3,674	3,515	3,576	0	28,799	3,693	3,790	3,944	3,928	4,453	0	19,808	48,607	45	48,652	-0.54%
2018	3,479	3,609	3,604	3,451	3,632	3,663	3,699	3,543	0	28,680	3,759	3,791	3,938	4,027	4,077	4	19,596	48,276	44	48,320	-0.68%
2019	3,518	3,524	3,614	3,614	3,463	3,656	3,670	3,716	0	28,775	3,718	3,839	3,917	3,990	4,135	0	19,599	48,374	51	48,425	0.22%
2020	3,630	3,572	3,583	3,661	3,502	3,591	3,785	3,869	0	29,193	3,726	3,943	4,106	4,158	4,304	0	20,237	49,430	52	49,482	2.18%
2021	3,654	3,679	3,602	3,646	3,541	3,627	3,728	3,993	0	29,470	3,863	3,917	4,148	4,278	4,394	0	20,600	50,070	52	50,122	1.29%
2022	3,716	3,698	3,690	3,653	3,531	3,661	3,765	3,944	0	29,658	3,986	4,059	4,133	4,334	4,526	0	21,038	50,696	53	50,749	1.25%
2023	3,865	3,775	3,709	3,737	3,542	3,652	3,795	3,979	0	30,054	3,942	4,195	4,294	4,348	4,600	0	21,379	51,433	54	51,487	1.45%
2024	4,185	3,922	3,781	3,745	3,617	3,665	3,784	4,008	0	30,707	3,980	4,157	4,434	4,512	4,627	0	21,710	52,417	54	52,471	1.91%
2025	4,449	4,249	3,933	3,813	3,620	3,741	3,800	3,998	0	31,603	4,008	4,193	4,396	4,650	4,779	0	22,026	53,629	56	53,685	2.31%
2026	4,558	4,514	4,260	3,963	3,680	3,743	3,877	4,014	0	32,609	3,996	4,220	4,432	4,614	4,911	0	22,173	54,782	57	54,839	2.15%
2027	4,719	4,622	4,524	4,293	3,823	3,801	3,878	4,093	0	33,753	4,012	4,210	4,459	4,647	4,887	0	22,215	55,968	58	56,026	2.16%
2028	4,885	4,787	4,632	4,560	4,135	3,944	3,936	4,095	0	34,974	4,091	4,226	4,448	4,672	4,914	0	22,351	57,325	60	57,385	2.43%
2029	5,005	4,957	4,793	4,663	4,388	4,256	4,076	4,153	0	36,291	4,093	4,303	4,465	4,663	4,940	0	22,464	58,755	62	58,817	2.50%

40 New Westminster

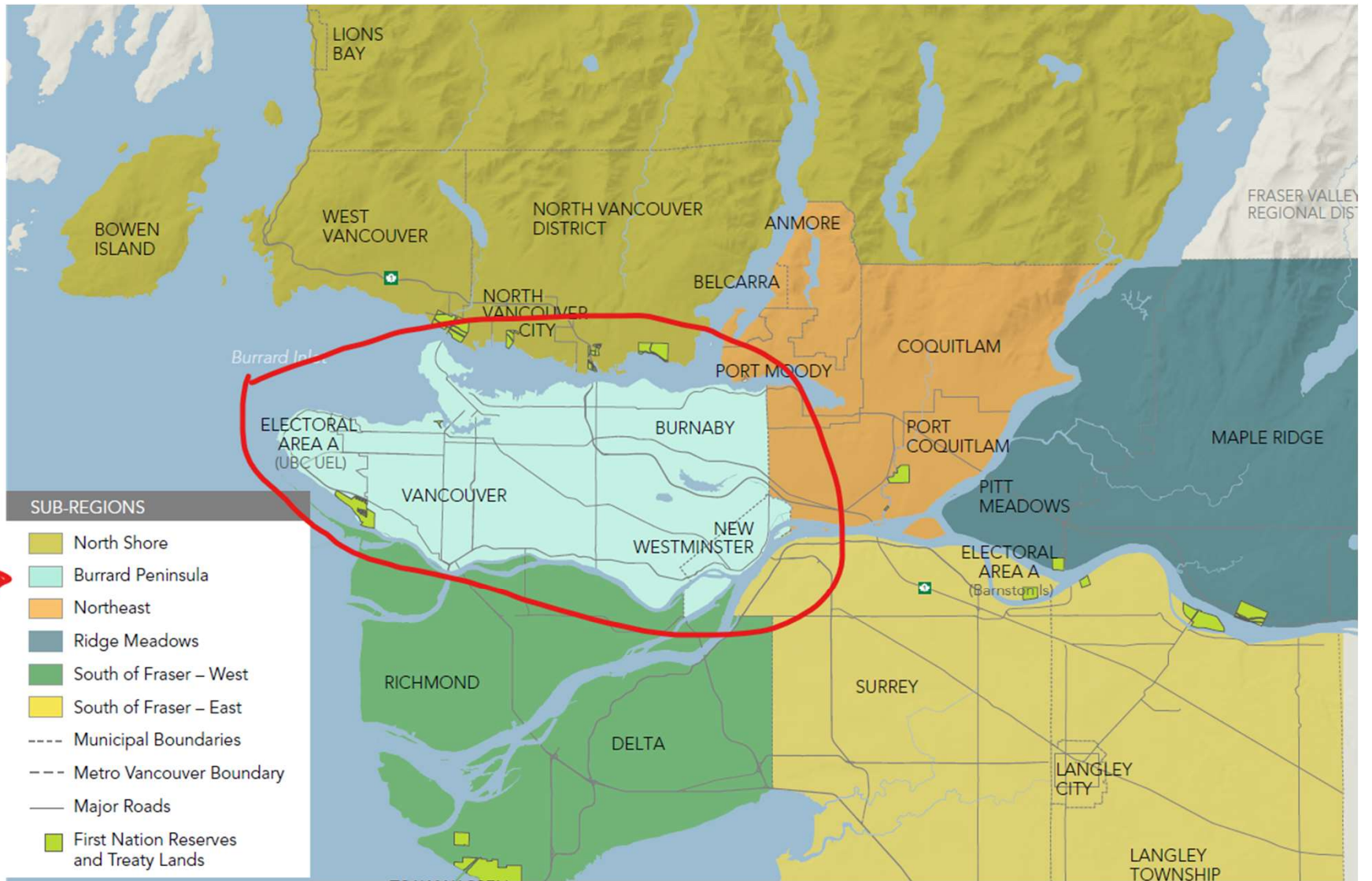


TABLE 1. REGIONAL AND SUB-REGIONAL PROJECTIONS BY DECADE TO 2050

		POPULATION				
SUB-REGIONS		2016	2020	2030	2040	2050
	Metro Vancouver Total	2,593,200	2,767,000	3,206,100	3,564,100	3,836,800
	Burrard Peninsula	1,014,800	1,064,900	1,206,000	1,311,900	1,387,800
	North Shore	199,600	207,600	236,400	254,100	271,000
	Northeast	245,300	263,100	316,100	363,800	396,500
	Ridge Meadows	105,500	110,800	127,200	142,800	155,000
	South of Fraser – East	713,400	782,600	939,300	1,077,400	1,185,300
	South of Fraser – West	314,500	337,900	381,100	414,100	441,300
		DWELLING UNITS				
SUB-REGIONS		2016	2020	2030	2040	2050
	Metro Vancouver Total	1,000,500	1,075,500	1,287,700	1,460,500	1,589,400
	Burrard Peninsula	435,900	462,900	533,200	584,600	623,400
	North Shore	79,600	83,500	100,500	111,800	121,900
	Northeast	90,000	96,800	124,800	148,600	165,700
	Ridge Meadows	38,800	42,200	50,000	56,800	61,900
	South of Fraser – East	242,800	267,000	332,400	395,300	441,100
	South of Fraser – West	113,500	123,100	146,700	163,400	175,400

POPULATION

DWELLING UNITS

Handwritten red annotations on the Population table:
 - A bracket from 2020 to 2030 with '+3.25%' written above it.
 - A bracket from 2030 to 2040 with '+8.78%' written above it.
 - A bracket from 2040 to 2050 with '+5.78%' written above it.
 - A bracket from 2030 to 2050 with '+30.3%' written above it.

Handwritten red annotation on the Dwelling Units table:
 - A bracket from 2020 to 2030 with '+26.3%' written above it.



VSB should make great use of this wonderful space for the education of our children, French Immersion or not



Be the wise stewards of the VSB properties and assets, on behalf of our children, our community

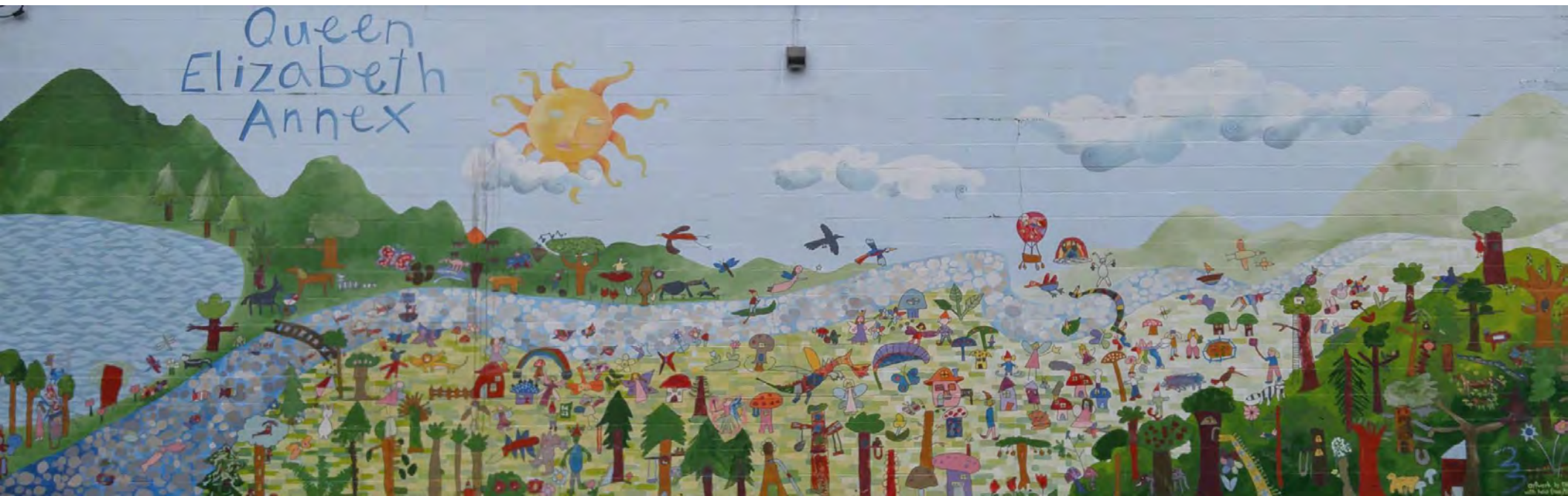
What legacy do you hope to leave behind after you stepped down (or up)?



ITEM 2.1.11

Delegation

Luis Alberto Enriquez



Significant Issues with the 'Information' being presented:

(1)VSB uses a misquoted false 8.4% decline in enrolment as a strong headline figure to rally to their cause. This is in direct conflict with official BC Stats (13% increase in 5-12 yr olds) and even more concerning is the complete divergence from VSB's very own enrolment data for elementary students where 4 out of the last 10 years reported show INCREASES in enrolments and the only year over 1% decline is the 2020-2021 pandemic year which of course is due to the pandemic and not even normal expected enrolment. There is no justification for the erroneous claim of decline in enrolment of 8.4% and this has misled the public and is misinforming trustees.

(2)VSB is also not being transparent even though that is a VSB guiding principle. VSB does not share data sources or how they calculate numbers and does not correct clearly incorrect information they present.

(3) Another example is the VSB saying QEA costs \$11,288 in operating costs per student versus \$7,855 allocation level which is meant to be eye catching and the VSB also throws out how QEA is 40% higher in operating costs. This is extremely misleading without context given there is capacity to use 4 more classrooms at QEA which are available for use and could be used immediately. If these 4 classrooms are used, adding in the additional costs for 4 additional teachers, the costs for QEA would actually be only \$7,082 per student which is BELOW the \$7,855 allocation amount at \$7,082. In addition, there is also another classroom currently used for a daycare which is vacating next year, if this is factored into the calculation, the QEA costs per student using that classroom could be as low as \$6,646 per student.

(4) VSB say that there are no waitlists for QEA which is completely untrue. They manipulate by using only 'first choice' and irrelevant time periods after school has already begun. Another example of inaccurate information, not being transparent with information/data or methodologies, and using vague evasive caveats to justify the misleading comments.

(5) The VSB also contradicts themselves with unsupported assertions. The concept that moving QEA students to JQ will be good for the students is irresponsible and inappropriate. Jules Quesnel is already one of the smallest schools in the district (by interior square footage per student) AND the outside area situation is even more acute with existing students being told they need to be segregated in various parts of an active dangerous parking lot for the Lord Byng pool for recess/lunch/after school. The conditions right now are already jammed inside, barely tenable outside, and then there's the whole traffic situation at drop off and pick up. This will of course be improved by adding another 4 divisions of students into the mix from QEA. VSB suggest there will be an improvement in educational experience and educational quality cramming more kids into JQ? This is clearly a lower quality situation inside for learning and outside for important aspects of play/socialization/breaks. Then there is the fact that the entire goal of saving money is to spread staff thinner, so there won't be any more Resource teachers or Support workers, but another 4 divisions added to JQ if QEA students went across. This absolutely will reduce educator to student time and increase ratios making education worse not better. While these are obvious to anyone, even one with zero education experience/qualifications, it is amazing that VSB senior staff and the VSB trustees can believe this.

These are only some examples of the VSB's failure to be transparent, the inaccurate information presented and the failure to properly support arguments and consider the key issues for students, families, community, and the public at large.

Presenting misleading information as 'facts' is dishonest, especially when the presenter is in a position of authority. Authorities must demonstrate they are not abusing their authority and being fair. Misquoting of this type of data and also doing so without context is biased misuse of statistics and certainly not something the public expects from VSB or the VSB Trustees.

We need long term sustainable strategic thinking and good decisions. Please do the right thing. Thank you

ITEM 2.1.12

Delegation

John Oliver PAC, Samantha Anderson

ITEM 2.1.13

Delegation

Christine Bowden

ITEM 2.1.14

Delegation

Judy Yanchuk

**QEA's unique site also
includes a Garden
built and nurtured by
QEA students, staff,
and families**











ITEM 2.1.15

Delegation

Rebecca Pitfield



Developments under construction on the West Side

City of Vancouver Developments

Rebecca Pitfield

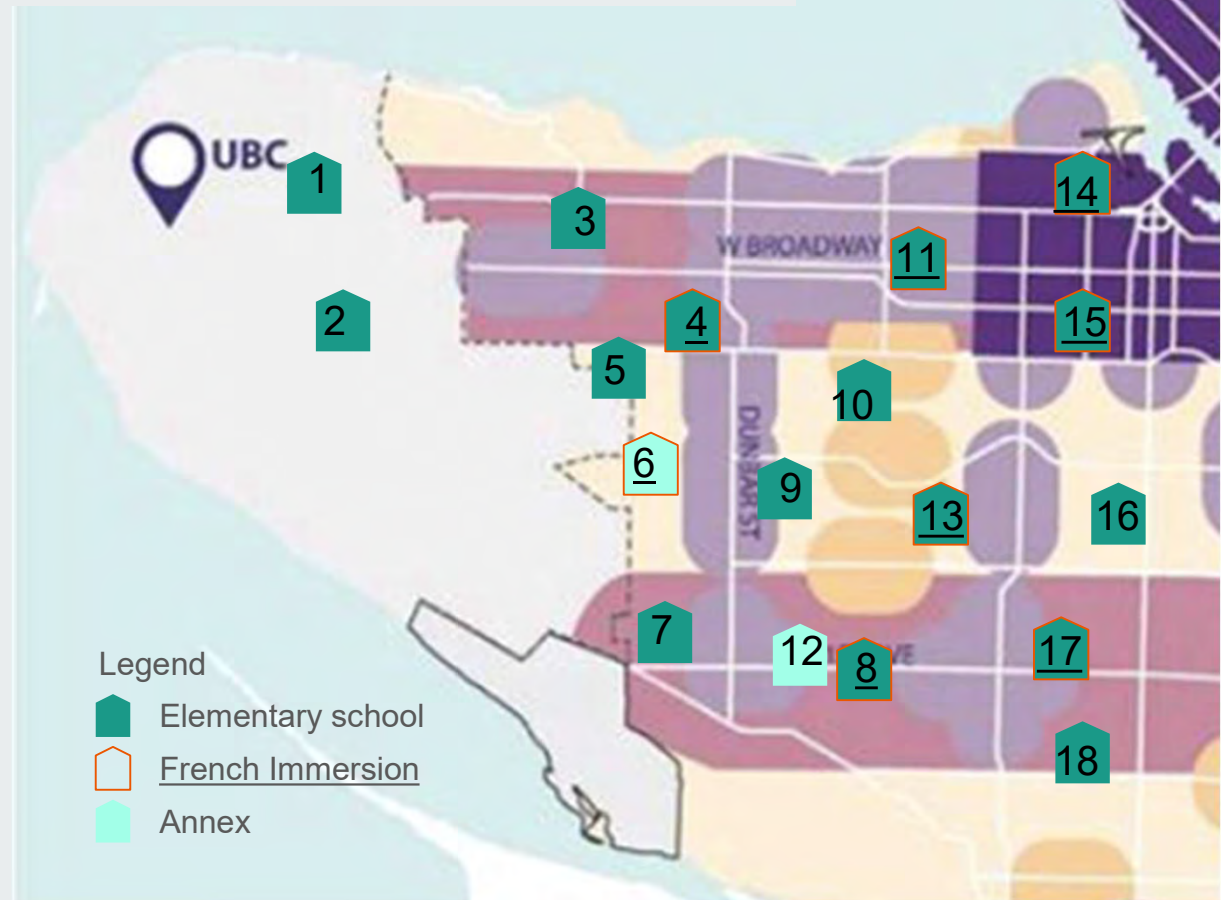
Presentation to Special Board Meeting

June 2nd 2022

Recap...

West Side schools are full: 97% utilization

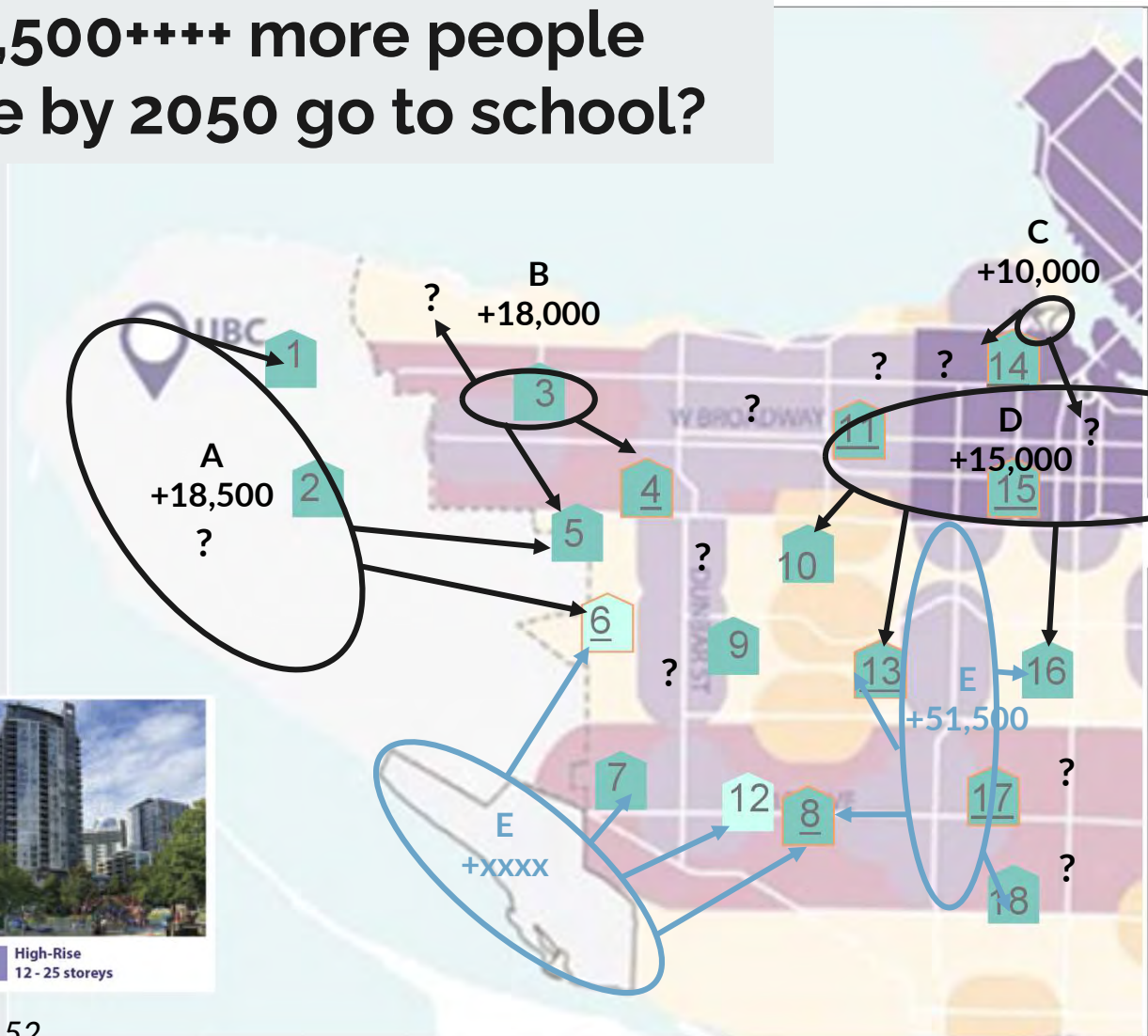
1. UHill	95%	371
2. Norma Rose	97%	793
3. Queen Mary	81%	394
4. Jules Quesnel	95%	398
5. Queen Elizabeth	82%	398
6. QEA	68% 77%	98 86
7. Southlands	75%	308
8. Kerrisdale	104%	507
9. Kitchener	95%	462
10. Carnarvon	97%	353
11. General Gordon	110%	398
12. Kerrisdale Annex	82%	98
13. Trafalgar	96%	463
14. Henry Hudson	13%	353
15. Lord Tennyson	97%	439
16. Shaughnessy	100%	421
17. Quilchena	125%	240
18. Maple Grove	102%	484
TOTAL	97%	 6966



Source: 2019 Utilization from [LRFP Appendix H](#), linked to locations via [VSB Schools Map](#), overlaid on base map: [Draft Vancouver Plan](#)

Recap... Where would 61,500++++ more people coming to the West Side by 2050 go to school?

- A. UBC: 15,000 more people (approved, 2010)
+ Campus Vision 2050 could increase (x2023)
Lelem: 3,500 (under construction)
- B. Jericho Lands: 18,000 more people (x 2022)
- C. Senākw: 10,000 more people (approved, 2021)
- D. Broadway Plan: 50-60,000 more people (x2022)
- E. Cambie Corridor: +51,500 more people (under construction)
- F. Musqueam IR2: +xxxx more people (under planning)
-
- Vancouver Plan: +10,000s of people in:



Source: [Vancouver Plan](#), Neighbourhood Centres page 52

++++Note: 61,500 does not include: +Cambie Corridor, +UBC additional CV2050, +Musqueam IR2, +Vancouver Plan additional density

Update...More developments underway

In grey: developments not previously presented

Name	Location	Size	Units	Type	Population	Status	Delivery timeline
Under construction / breaking ground around QEA					26,790		
Wesbrook Neighbourhood	UBC	51 acres	6250	Rental and condo units	12,500	Construction 2005, 60% occupied	Complete 2007-2028
Senákw	Kitsilano	11 acres	6000	Rental units	10,000	Construction 2022	Complete 2027
Lelem	UEL	22 acres	1250	Rental and condo units	2,500	Construction 2021	Complete 2023-2030
Point Grey Safeway	4545 West 10th	3 acres	530	Rental units, 20% moderate incomes	1,030	Construction 2023-2024	Complete 2026-2027
3701-3743 West Broadway	West Point Grey	0.5 acres	161	Rental units, 20% moderate incomes	300	Construction 2021	Complete 2026-2027
3596 W 28th Avenue	Dunbar		48	Condo units	100	Construction 2021	
3349-3479 W 41st Street	Dunbar		109	Rental units	220	Approved Feb 2022	
3636 W 39th Avenue	Dunbar		29	Condo units	60		
5659 Dunbar Street	Dunbar		25	Condo units	50	Approved Dec 2021	
5520 Dunbar Street	Dunbar		15	Condo units	30		
Area Plans on West Side					80,500		
Cambie Corridor	Cambie	247 acres	30,000-34,100	Social, affordable, rental, condo units	50,000	Approved May 2018	Complete 2041
Heather Lands (part of Cambie Corridor)	Cambie	21 acres	2612	Social housing, rental and condo units	5,750 (not counted in total)	Approved May 2022	Complete 2037
Jericho Lands	West Point Grey	90 acres	9000	Varies, 30% affordable, 20% social, 10% rental	18,000	Draft Feb 2022	Start 2025
Broadway Plan	Clark-Arbutus	2125 acres	30,000	Varies	50,000 (25% counted in total)	Draft April 2022	Complete 2050
City/Local Authority & Regional Plans							
Metro 2050	Region				1 million	Draft March 2022	2050
Vancouver Plan	Vancouver				260,000	Draft March 2022	2050
Campus Vision 2050	UBC	994 acres			(TBD)	Early planning	2050



Thank you



ITEM 3

ADJOURNMENT

Thank you for your time,

The End