

Program Information 2025-2026 Year

***PRELUDE
10***

Please first carefully read the FAQ posted on the Churchill website to ensure eligibility.



The Agenda

- The Prelude Program Goals and Purpose
- Prelude Courses
- The Application Process



OVERVIEW

- The Grade 10 Prelude Program consists of engaging courses that place emphasis on the skills of independent research, analysis, and communication in a variety of forms. Collaboration, community-mindedness, self-motivation, and personal growth are key.
- At the heart of Prelude are two program-specific courses designed to develop community engagement, happiness, leadership, and communication skills: **International Studies** and **Prelude Leadership**.
- A fuller program overview can be found here: [Prelude Website](#)



PRELUDE LEARNER PROFILE: GROWTH AND DEVELOPMENT

The Prelude learner will:

- **Seek Balance**
- **Be Proactive**
- **Take Healthy Risks**
- **Communicate Effectively**
- **Make Principled Choices**
- **Be Open-Minded**
- **Collaborate, Reflect, and Inquire**

CAMP

An early way to engage students with the Prelude Learner Profile will be two-night trip to Evans Lake to build leadership skills and community and to engage with the environment. This trip, which will take place in October, was designed by former Prelude students as part of their Service-Learning Project in Prelude Leadership 10. It was so successful that it has become an annual event! Rates for camp and transport will be finalized by September 2025.





CROSS-CURRICULAR SKILL DEVELOPMENT

Image is metaphorical. Field trips do not look like this.
Yet. 😊

1. LEARNING TO QUESTION

You aren't really learning until you realize that education isn't about accumulating information – it's about **assimilating** and critiquing information. How does new knowledge fit with what you already know? Students will continue to learn to think critically.



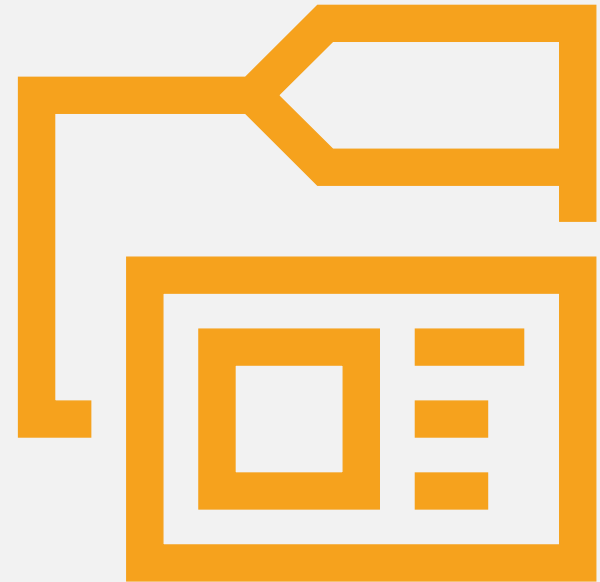


2. LEARNING TO WRITE

- Writing skills are essential for lifelong learning and for almost every career (and some would argue that they're pretty great for finding joy, as well).
- Students will work in a variety of genres with different audiences and different purposes in mind to further their communication skills and their ability to take part in challenging and important conversations.

3. LEARNING TO RESEARCH

A 21st century requirement is the ability to retrieve meaningful and legitimate data: to use every resource from the library to the Internet to the news media critically and thoughtfully.



4. LEARNING TO COMMUNICATE



Strong leaders have effective communication skills. In the Prelude program there are many opportunities to take part in presentations and discussions. Students will express themselves through multiple modes of communication.

5. LEARNING TO LEARN

In the Prelude Program students will be surrounded by like-minded peers who are keen to learn. For them, learning through feedback is more important than marks. Students must bring curiosity and a willingness to try, make mistakes, and learn from them.



7. MANAGE TIME EFFECTIVELY



- It is already known that school isn't everything. Extra-curricular activities and relationships are important too. You must have balance in your life.
- The best sign of success is when you can balance work with play. This requires careful planning, practice, and strong communication.

A pair of black-rimmed glasses is resting on a stack of books and papers. A red ribbon bookmark is visible on the left side of the stack. The background is blurred, showing more books and papers.

2. PRELUDE COURSES

*Prelude
Program
Courses*

English

French Immersion

English Language Arts

*International Studies/
Leadership*

*Etudes
Internationales/
Leadership*

Social Studies

Sciences Humaines

Science

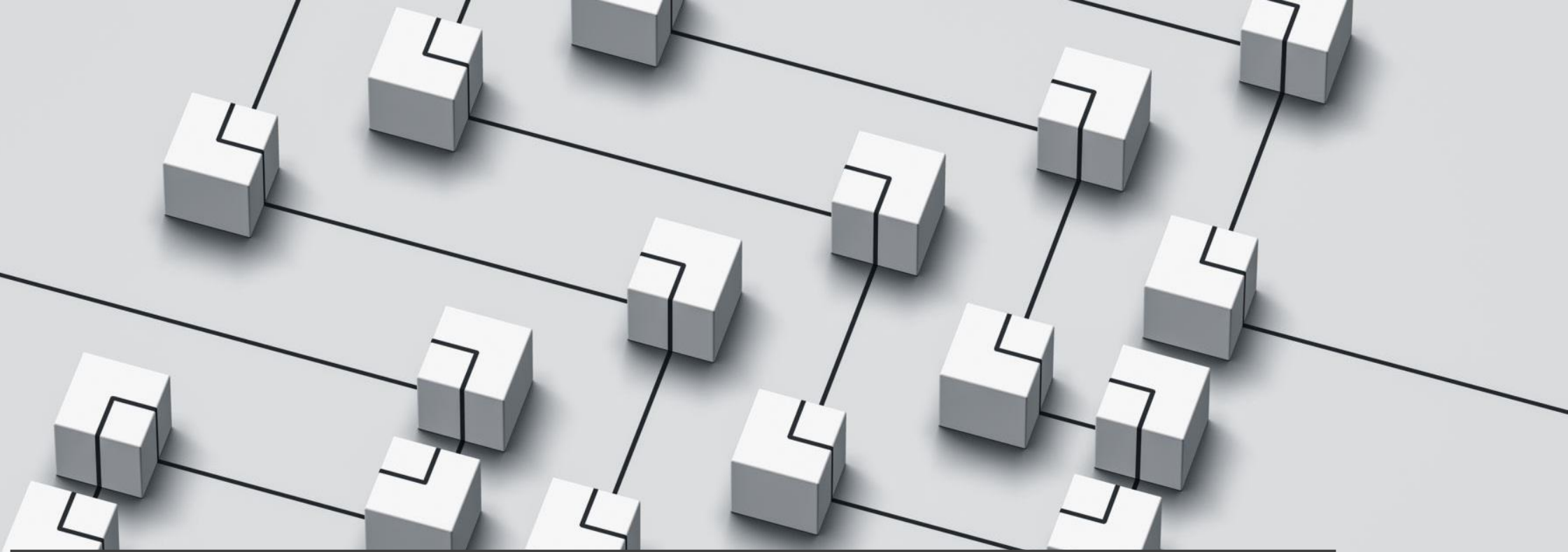
Science

**Regular
Program
Courses**

Mathematics

PE 10

**Two Electives (perhaps a
language)**



3. THE APPLICATION PROCESS

IMPORTANT DATES

16 Dec. 2024

Information slides, Learner Profile, Proof of Residency Form, and Application Form are available through the Churchill Prelude webpage. [Click Here](#)

10 Feb. 2025

Letters are available in the Main Office. Please watch for announcements on Teams for exact times.

The **Prelude Application** is due through Microsoft Forms by 9:00am. The **Proof of Residency** form is due in the Main Office by 3:10pm. Please make sure that you have read all of the FAQ before applying and that the application form is complete.

8 Jan. 2025

APPLICATION HONESTY

It is crucial that we are able to see who you are at this time so that we can determine if the program will be a good fit for you. So, please note that **all application materials must be created entirely by the applicant.** Any work that is not entirely the applicant's own will be deemed academically dishonest and will not be considered.

- ✓ Spell check is permitted.
- ✓ Discussions with humans to help clarify your own ideas are permitted.
- Editors of any kind (digital, artificially intelligent, and human) are not permitted. You may have a peer or parent/guardian/mentor read through your application and offer constructive feedback and clarity, but they may not make any changes, additions, or corrections to the work.
- Grammarly is not permitted.
- Representing someone else's (human or otherwise) words, sentences, thoughts, or ideas as your own is not permitted.

If you have any questions about academic honesty, please reach out to Ms. Deschner at wdeschner@vsb.bc.ca. Work may be compared to in-class assignments and/or submitted to a variety of plagiarism checkers.

PRELUDE PORTFOLIO APPLICATION

- You can find the application form here: [Prelude Application Form](#)
- Pro tip: it is wise to draft your responses to the longer questions and then copy them over into the form to prevent loss of time and effort 😊
- The Proof of Residency form is provided here: [Proof of Residency Form](#)
- Thank you for taking the time to apply to Prelude! We are very much looking forward to getting to know you and we appreciate your work!



CONTACT INFORMATION

It is important that students start practicing advocating and communicating on their own behalf. Please help them to build independence by encouraging them to ask questions for themselves. Students can email Ms. Deschner, the Prelude Program Coordinator, at wdeschner@vsb.bc.ca with any questions or stop by room 219 during FIT.