

# WELCOME TO THE 2025-2026 SCHOOL YEAR!

Üdvözöljük

歡迎

Bem-vindo!



مرحباً

ຍິນດີຕ້ອນຮັບ



ਜੀ ਆਇਆਂ ਨੂੰ



Welkom



환영합니다

Mabuhay



ברוכים הבאים

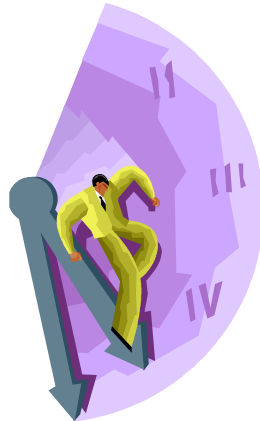
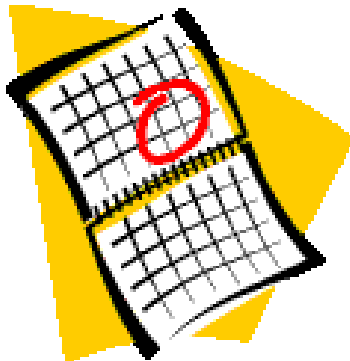




2

WITH DEEP GRATITUDE AND RESPECT, WE ARE  
HONOURED TO BE LEARNING AND UNLEARNING ON THE  
ANCESTRAL AND UNCEDED LANDS OF  
THE THE X<sup>w</sup>MƏΘK<sup>w</sup>ƏYƏM (MUSQUEAM NATION),  
SK<sup>w</sup>X<sup>w</sup>U<sup>w</sup>7MESH ÚXWUMIXW (SQUAMISH NATION)  
& SƏLILWƏTƏŦ (TSLEIL-WAUTUTH NATION).

Haida	Hydah	Kootenay	Haida
Ktunaxa	Tun-ah-hah	Kootenay	Ktunaxa
Tsimshian	Sim-she-an	Tsimshian	Tsimshian
Gitksan	Git-k-san	Tsimshian	Tsimshian
Nisga'a	Nis-gaa	Tsimshian	Tsimshian
Haisla	Hyzlāh	Kitimat	Wakashan
Heiltsuk	Hel-sic	Bella Bella	Wakashan
Oweekeno	O-wik-en-o	Kwakiutl	Wakashan
Kwakwaka'wakw	Kwak-wak-ya-wak	Kwakiutl	Wakashan
Nuu-chah-nulth	New-chan-lulth	Nootka	Wakashan
Tsilhqot'in	Chil-co-teen	Chilcotin	Athapaskan
Dakelh	Da-kelh	Carrier	Athapaskan
Wet'suwet'en	Wet-so-wet-en	Carrier	Athapaskan
Sekani	Sik-an-ee	Sekani	Athapaskan
Dunne-za	De-ney-za	Beaver	Athapaskan
Dene-thah	De-ney-ta	Slavey	Athapaskan
Tahltan	Tail-ten	Tahltan	Athapaskan
Kaska	Kas-ka	Kaska	Athapaskan
Tagish	Ta-gish	Tagish	Athapaskan
Tutchone	Tuchon-ee	Tutchone	Athapaskan
Nuxalk	No-halk	Bella Coola	Coast Salish
** Coast Salish		Coast Salish	Coast Salish
St'at'imc	Stat-liem	Lillooet	Int. Salish
Nlaka'pamux	Ing-khla-kap-muh	Thompson/Couteau	Int. Salish
Okanagan	O-kan-a-gan	Okanagan	Int. Salish
Secwepemc	She-whep-m	Shuswap	Int. Salish
			Tlingit



# AGENDA



**Administration Welcome  
Mr. Evans & Ms. Clark**



**Introductions**



**Helpful Reminders**



**Closing Comments**





# Introductions



**T. Evans**  
*works with*  
*Students in*

**Grade 11 & 12**

# **PRINCIPAL'S MESSAGE**



**T. Evans**



**D. Clark**  
*works with*  
*Students in*

**Grade 8, 9 & 10**

# **VICE-PRINCIPAL'S MESSAGE**

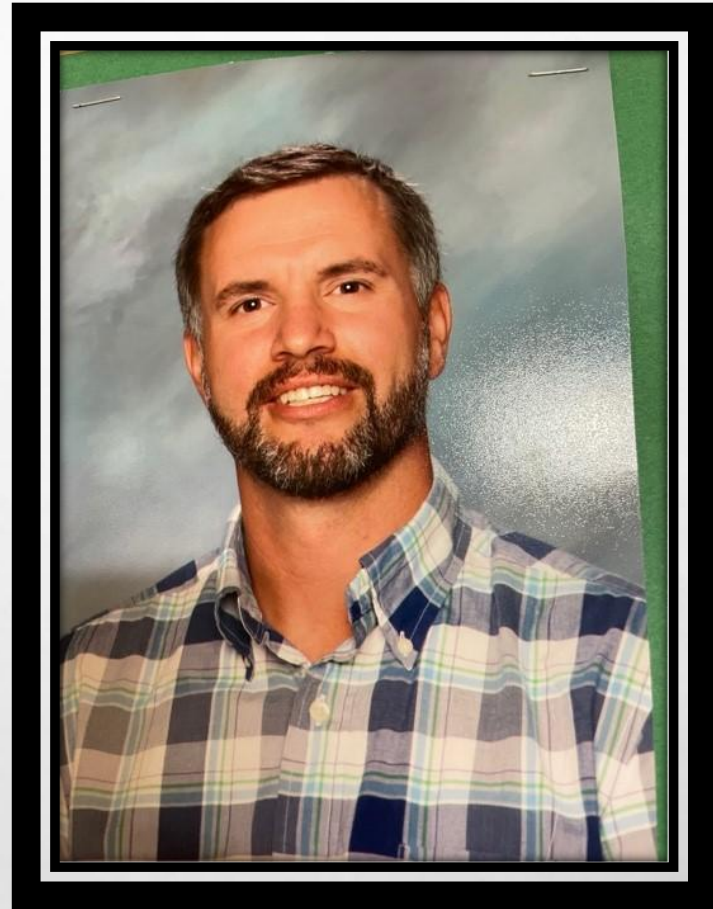
**D. Clark**



# **KING GEORGE COUNSELLORS**

**S. DERGANÇ**

**WORKS WITH  
STUDENTS IN GRADE 9 & 11  
AND  
GRADE 8 K - Z**







# **KING GEORGE COUNSELLORS**

- **J. MIKI**
- **(E. BEKKERING – MARCH 2026)**
  
- **WORKS WITH**
- **STUDENTS IN GRADE 10 & 12**
- **AND**
- **GRADE 8 A – J**



# Community Schools Team



Vive Wong (Community Schools Team Coordinator)

Jasmine Elsayed (Youth & Family Worker)

School Liaison Officer (Vivian Quach)

Lara MacFarlane – LRP (Leadership Resiliency Program)

Douglas Treloar (Indigenous Enhancement Worker)

Daniela Mesa Parra (SACY Worker)

# Athletics



## Fall

Badminton  
Basketball  
Soccer  
Volleyball

## Winter

Badminton  
Basketball  
Ski/Snowboard  
Soccer  
Volleyball

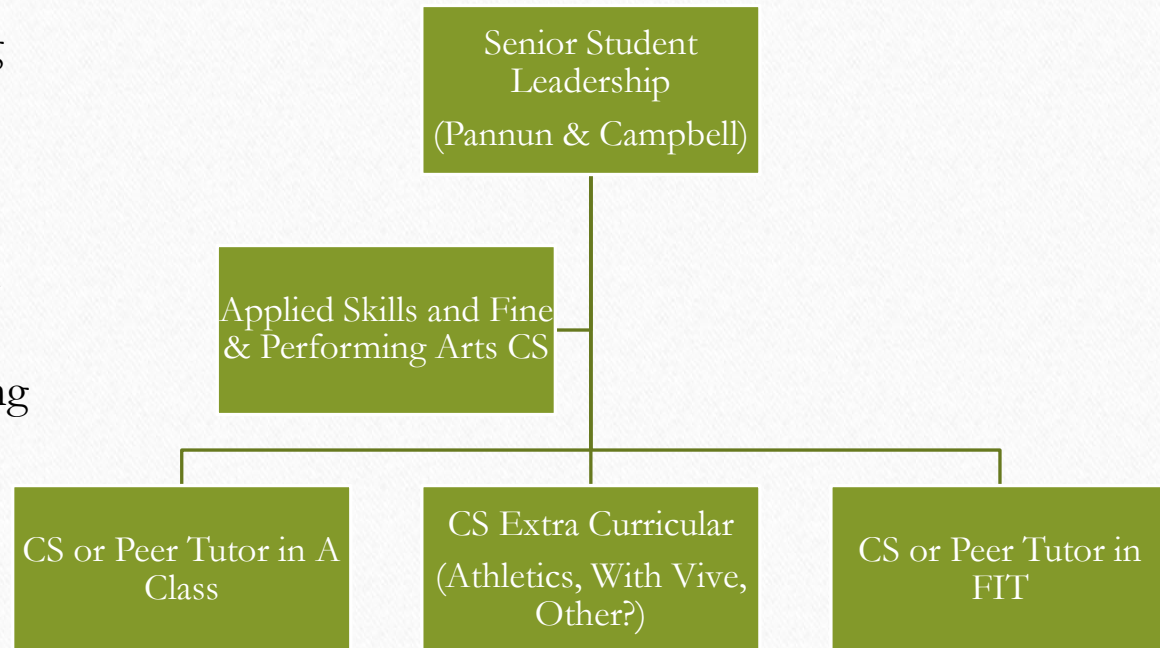
## Spring

Badminton  
Basketball  
Tennis  
Soccer  
Volleyball  
Ultimate



## Format for CS, Leadership & Peer Tutoring

- Students do training sessions prior to beginning their role
- Leadership teachers and host teacher are responsible for collaborative marking and assessment







# Timetable

---

- Grade 9s and 10s should have a full timetable.
- No Study Blocks for Grade 9/10s
- We are working to create a complete schedule for each student.
- There will be changes this week.

# West End Community Centre

Our neighbours are an important part of our community supporting our students

We work closely with the youth community programmers for additional activities and clubs



# King George Club Offerings

Badminton  
Earth Club  
Here4Peers

Grad Council  
Gay-Straight-Alliance  
Interact / Leadership  
Library Monitors

Weight Training  
Creative Writing  
Scorekeepers  
Dungeons and  
Dragons  
Chess

***KG Clubs are student initiated  
and staff sponsored***



**SEE  
MS. MANN  
IN 201  
TO SIGN UP**

**GROOVE  
CREW  
DRUMMING  
UP  
CONNECTION**



**DRUMMING CIRCLE  
INNER CIRCLE - PLAY  
SECOND CIRCLE-VIBE  
DATES:**

**MON. SEPT. 22**

**MON. SEPT. 29**

**TUES. OCT. 7**

**TUES. OCT. 14**

**TUES. OCT. 21**

**MON. OCT. 27**



Rhythm of life Society



# Structure of the school day

## DAILY BLOCK SCHEDULE 2025-2026

	Monday	Tuesday	Wednesday	Thursday	Friday
<b>FIT</b>	8:40 - 9:20		8:40 - 9:20		
<b>Break</b>	9:20 - 9:25		9:20 - 9:25		
<b>Period 1</b>	9:25 - 10:25	8:40 - 10:00	9:25 - 10:25	8:40 - 10:00	8:40 - 10:00
<b>Break</b>	10:25 - 10:35	10:00 - 10:15	10:25 - 10:35	10:00 - 10:15	10:00 - 10:15
<b>Period 2</b>	10:35 - 11:35	10:15 - 11:35	10:35 - 11:35	10:15 - 11:35	10:15 - 11:35
<b>Lunch</b>	11:35 - 12:20	11:35 - 12:20	11:35 - 12:20	11:35 - 12:20	11:35 - 12:20
<b>Period 3</b>	12:20 - 1:40	12:20 - 1:20	12:20 - 1:40	12:20 - 1:20	12:20 - 1:40
<b>Break</b>	1:40 - 1:45		1:40 - 1:45		1:40 - 1:45
<b>FIT</b>		1:20 - 2:00		1:20 - 2:00	
<b>Break</b>		2:00 - 2:05		2:00 - 2:05	
<b>Period 4</b>	1:45 - 3:05	2:05 - 3:05	1:45 - 3:05	2:05 - 3:05	1:45 - 3:05

# What is FIT time?

## F.I.T (Flexible Instruction Time)

### SIGN IN TO THE CLASS FOR ATTENDANCE

FIT time is Flexible Instruction Time and runs every Monday & Wednesday (am) and Tuesday & Thursday (pm) for 40 minutes.

During this time, students are to go to any open classroom where staff will provide supervised study sessions. Students may go any to any class, providing the teachers room has space. If the door to a classroom is shut, that room is not available for FIT or the room has reached capacity and is full.

Students are expected to work quietly in small groups or independently doing tasks such as - homework, reading, capstone, groups projects etc. Students can also go to rooms where there is a specific teacher, who may be able to help them with specific work or tasks. Students will be able to use their personal technology, as long as they have headphones/earphones attached and that they are using it for educational purposes. It will be essential that students do not disrupt the learning environments for others.

Some students will be able to access the RISE room, if they have a RISE block and need additional supports.

During FIT time, the school administration will also host grade wide assemblies and other information sessions throughout the year.

If students are not required to attend a Grade wide assembly, they will be expected to attend any classroom, which is open, the school library or cafeteria that will also function as study rooms. **Students will not be permitted to sit in groups in the hallways.**





# **STUDY BLOCKS**

- **PLEASE DO NOT BE IN  
THE HALLWAYS**
- **YOU ARE WELCOME TO  
BE IN THE**
  - **WECC**
  - **KG LIBRARY**
  - **JOE FORTES  
LIBRARY**
  - **OFF CAMPUS**

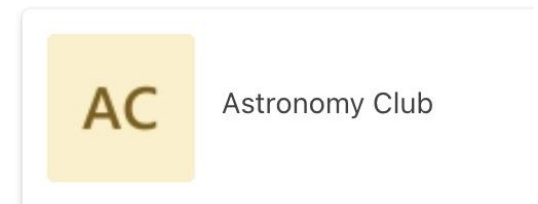
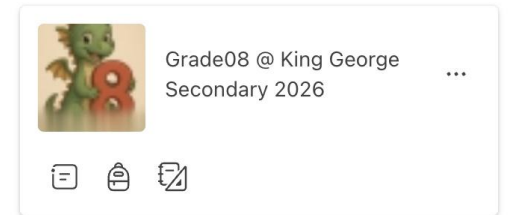
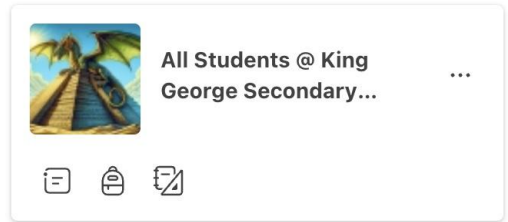
# SCHOOL COMMUNICATION

**Teams** is the primary platform for communication for the following:

- General School announcements
- Athletics announcements
- Clubs' communications and announcements
- Communication with a course teacher and course information.

AND...

- All Students @ King George Secondary and individual grade Teams are now available.
- **Turn on notifications** for the Teams you need.



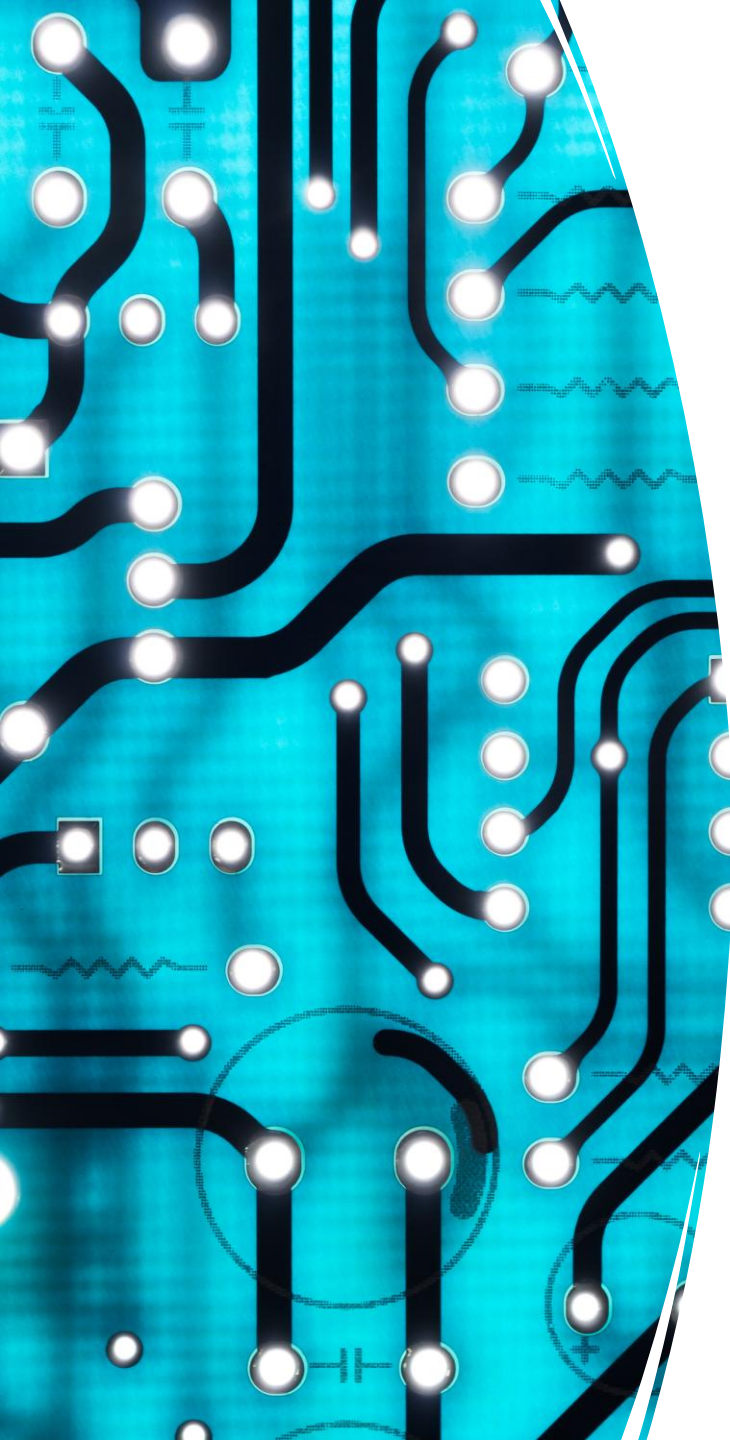
# CELLPHONES

GENERAL RULE: OFF AND OUT OF SITE DURING CLASS TIME

TEACHERS MAY INVITE  
STUDENTS TO USE DEVICES  
FOR EDUCATIONAL PURPOSES







# TECHNOLOGY & DIGITAL CITIZENSHIP

---

1. The *Internet is a public place*, and as such, general school rules for behaviour apply.
2. The school network is an educational tool, not an entertainment medium.
3. Network storage areas will be treated like school lockers. Network administrators may review files and communications to maintain system integrity and ensure that users are using the system responsibly. Users should not expect that files will always be private.
4. Any unauthorized use of school systems or networks is prohibited.
5. Violations may result in a loss of access as well as other disciplinary and/or legal action.

# SOCIAL MEDIA

---

- Instagram, TikTok, Twitter/X and other social media accounts that are associated with a school club/team must have a teacher sponsor connected to the account and registered with the school
- Do not use social media sites, whatsapp, Discord or texts to communicate with staff - use Teams/Outlook
- Social media used for school purposes must adhere to VSB policies

# ACADEMIC HONESTY

$$\sqrt{ax} = c$$

$$\sqrt{ax} = a + c$$

$$\log ax = r/\log ax$$

$$P(A \cup B) = P(A) + P(B) - P(A \cap B)$$

$$\log_a(k_1 k_2) = \log_a k_1 + \log_a k_2$$

$$P(A) = \frac{m(A)}{m}$$

$$[a_1, a_2] = a_1 + a_2$$

$$[a_1, a_2] = |a|(\cos \theta + i \sin \theta)$$

$$(af + bg)' = af' + bg'$$

$$\frac{n}{\sqrt{r}(\cos \theta + i \sin \theta)} = -\frac{1}{\sin^2 x}$$

$$\frac{6x - 4y}{7} = \theta$$

$$6x - 4y = \theta$$

$$a = 6$$

$$b = -4$$

$$b = +15$$



# SMOKING, VAPING & E-CIGS

Smoking is a serious health hazard.

We ask all members of our community  
to refrain from smoking anywhere  
within the school or on school grounds.

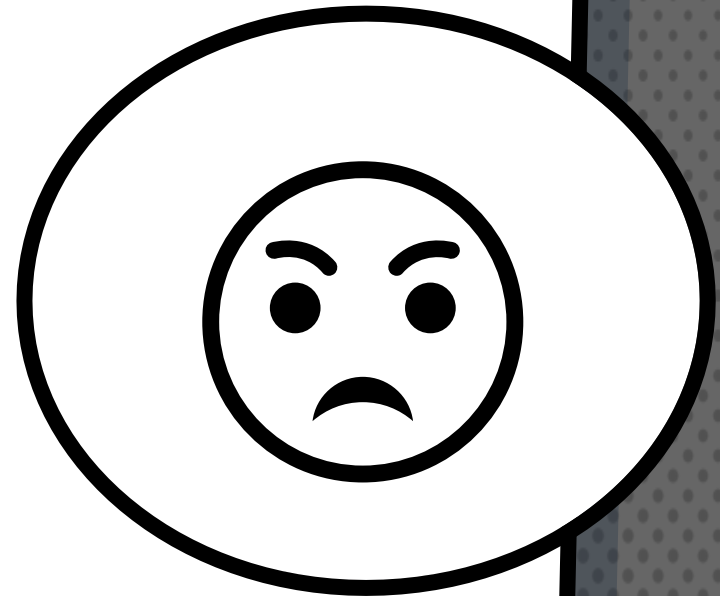


# DRUGS, ALCOHOL, WEAPONS & VIOLENCE

Students can not be in possession of, or under the influence of, drugs and/or alcohol while at school or school-related functions.

Weapons, or any objects used as a weapon, are not permitted.

Violence, or threats of violence, of any kind will not be tolerated and will result in immediate administrative consequences.



# What should you do...?

If you are a victim or witness unsafe activity in our school community, report to an adult in the building:

- × COUNSELLOR
- × Teacher
- × Support Staff
- × Administrator
- × Parent



You can tell a friend, but you **MUST** report to an adult.




# Anti-Racism



The Vancouver School Board (VSB) is committed to a District code of conduct that upholds safe, inclusive, equitable, welcoming, nurturing and healthy school environments. To this end, the District code of conduct promotes clear behavioural expectations of respectful and responsible citizenship that lead to a culture of safety, caring and respect amongst everyone in our schools and programs and at all school-events and activities



***Racism  
will not be  
tolerated  
in our  
school***

A close-up photograph of a yellow school locker. The locker has a silver metal handle and a lock mechanism. The top of the locker features a series of horizontal ventilation slats. The image is partially cut off on the right side, showing a white background.

# LOCKERS

---

- Are the property of the school
- May be decorated inside your assigned locker, with removable decorations.
- Are assigned to individual students only - do not share locker
- May not contain illegal substances or weapons
- Should not contain valuables
- Are not to have food in them overnight
- *Gym Lockers also need locks*

# UPCOMING CALENDAR

- **SEPT 19 – PRO-D DAY**
- **SEPT 23 OR 25 – TERRY FOX RUN**
- **SEPT 30 – NATIONAL DAY FOR TRUTH & RECONCILIATION**
- **OCT 3 – COLLABORATION DAY – SCHOOL BEGINS AT 10:10 A**
- **OCT 6 – PHOTO DAY**
- **OCT 13 – THANKSGIVING HOLIDAY**





WE HOPE YOU HAVE A GREAT YEAR!