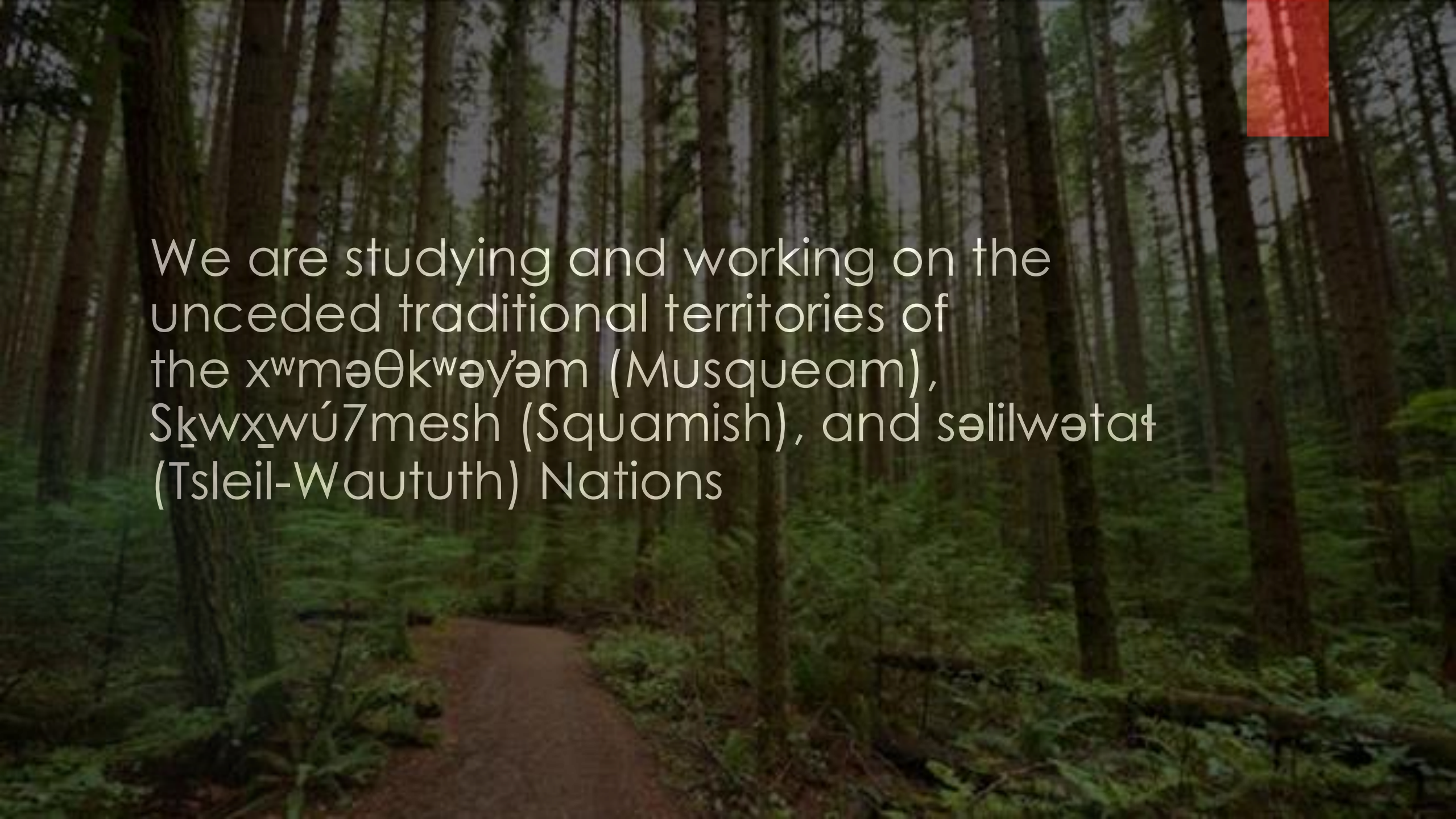




# Course Planning for grade 12

2025-2026

A photograph of a forest path with overlaid text. The path is a narrow, dirt trail that curves through a dense forest of tall, thin trees. The ground is covered with green ferns and other forest floor vegetation. The lighting is soft, suggesting an overcast day. In the upper right corner, there is a small, bright red rectangular object, possibly a flag or a marker, attached to a tree.

We are studying and working on the  
unceded traditional territories of  
the x<sup>w</sup>məθk<sup>w</sup>əy'əm (Musqueam),  
Sk<sup>w</sup>x<sup>w</sup>ú7mesh (Squamish), and səlilwətəł  
(Tsleil-Waututh) Nations



# The Agenda

- ▶ Review of the Graduation Program
- ▶ Overview of Post-Secondary Planning
- ▶ Requirements for Students Entering Grade 12
- ▶ Course Planning Process and Timeline

# Graduation Program

Grade 10	Grade 11	Grade 12
English 10 Combination **	An English 11 *	English Studies 12 **
A Mathematics 10 *	A Mathematics 11	Elective 12
Physical & Health Education 10	A Science	Elective 12
Science 10	A Social Studies 11 and/or 12*	Elective 12
Social Studies 10	Elective (10, 11, or 12)	Elective (10, 11, or 12)
Elective	Elective (10, 11, or 12)	Elective (10, 11, or 12)
Elective	Elective (10, 11, or 12)	Elective (10, 11, or 12)
Elective	Elective (10, 11, or 12)	Elective (10, 11, or 12)
Career Life Education 10- off timetable	Elective (10, 11, or 12)	Career Life Connections 12 – off timetable

- One Arts Education or Applied Design, Skills & Technology course at grade 10, 11, or 12
- Required “Numeracy Assessment” in grade 10 independent of specific Mathematics courses
- Required “Literacy Assessment” in grade 10 & 12 independent of specific Language Arts subjects

\* Required Indigenous-focused content course (pick for either En11 or SS 12)

# Course Selection Requirements for Students entering Grade 12

7 courses will be selected for next year:

- a minimum of 6 on timetable at PG + 1 off-timetable and/or 1 online, for a total of 7 (or more) courses

Generally, students will have:

- English Studies 12
- Career Life Connections 12 (not counted in this total)
- At least 3 or more grade 12 level courses to fulfill graduation requirements and admission requirements for those considering applying to PSIs

**Students will enter course requests on-line, submit a signed (student and parent) Course Planning form to me by Friday February 21, 2025**

# Indigenous-Focused Graduation Requirement

## Course Options at Point Grey

English First Peoples- Literacy Studies & Writing  
11

English First Peoples- Literacy Studies & New Media  
11

Contemporary Indigenous Studies  
12

# Grade 12 English

## Graduation Requirement

### English Studies 12 (MENST12)

- ▶ This course is a BC Ministry of Education graduation requirement.

OR

### MINI English Studies 12 (MENST12DC1)

- ▶ This course is a graduation requirement and **required Mini school course.**

## Grade 12 English \*Elective\*

Literary Studies 12 – **this cannot be used as a substitute for English Studies 12.**

- ▶ See course guide for description

# Math

## Pre-Calculus 12

After completing Pre-calculus 11, students will cover several topics that will support the study of Calculus in secondary school and beyond in their post-secondary studies.

## Calculus 12

Intended for those who have shown an aptitude for mathematics and preferably have completed Pre-calculus 12 or are concurrently enrolled in Pre-calculus 12. This course moves at a slower pace than AP Calculus and is intended for students who intend on pursuing engineering, science, mathematics, and business in their post-secondary studies.

## AP Calculus 12

An advanced mathematics course that explores Calculus topics in greater depth and a faster pace than Calculus 12. Students have the option of registering to write the AP Calculus exam in May to potentially earn advanced placement credit towards future university studies. Note: There is an application process for AP courses.

## **MATHEMATICS 11 COURSES:**

**PRE-CALCULUS 11, FOUNDATIONS OF MATH 11, WORKPLACE MATH 11**

**& MATH FOUNDATIONS 12 \*New for next year**



Mathematics requirements at both the Grade 11 and 12 levels **can be very specific** and often **differ** from institution to institution.



### SAMPLE FUTURE EDUCATIONAL PLANS

### MATH REQUIREMENT

- College
- Trade School (varies on the trade studied)
- Direct entry to workforce

Often **Workplace Mathematics 11** satisfies (which provides graduation requirement).  
\*some programs may require Pre-Calculus or Foundations of Math 11 or 12.

- Math
- Science
- Health Sciences
- Engineering
- Commerce

**Pre-Calculus 11 and 12.**

\*some programs may also require **Calculus 12**, such as those in Ontario.

- Social Sciences
- Humanities
- Fine Arts
- Undecided

**Pre-Calculus 11.** At some institutions, **Foundations of Math 11** will satisfy (at UBC, Pre-Calculus 11 or Foundations of Math 11 & 12).

All students must take all of the required courses in any one level unless exceptions are approved by the ELL department contact and/or administrator.

<b>ELL Level 1/2 (as needed)</b>	<b>ELL Level 2/3 (as needed)</b>	<b>Transitional (one year)</b>
<ul style="list-style-type: none"><li>① ELL 1/2 Reading</li><li>② ELL 1/2 Writing</li><li>③ ELL 1/2 Social Studies</li><li>④ ELL Science</li><li>⑤ Grade level Math</li><li>⑥ Grade level Physical &amp; Health Education</li><li>⑦ Grade level elective</li><li>⑧ Grade level elective</li></ul>	<ul style="list-style-type: none"><li>① ELL 2/3 English</li><li>② ELL 2/3 English Tutorial</li><li>③ ELL 2/3 Social Studies</li><li>④ ELL Science or grade level Science</li><li>⑤ Grade level Math</li><li>⑥ Grade level Physical &amp; Health Education</li><li>⑦ Grade level elective</li><li>⑧ Grade level elective</li></ul>	<ul style="list-style-type: none"><li>① Transitional English Junior or Senior</li><li>② English Tutorial</li><li>③ Transitional Social Studies Junior or Senior</li><li>④ Grade level Science</li><li>⑤ Grade level Math</li><li>⑥ Grade level Physical &amp; Health Education</li><li>⑦ Grade level elective</li><li>⑧ Grade level elective</li></ul>

# ELL Program

# Train in Trades Programs

Opportunity for grade 11 or 12 students to take one of **19 “Train in Trades”** programs:

- Tuition Free
- Post Secondary level Training
- Level 1 Certification
- Dual/Triple Credits:
  - high school
  - post secondary and/or industry



# Trades Program Options

- **Aircraft Maintenance Engineer**
- **Automotive Collision and Refinishing Technician**
- **Automotive Service Technician**
- **Baking and Pastry Arts**
- **Carpentry**
- **Cisco and IT Networking**
- **Electrical**
- **Hairstylist**
- **Hamber Fashion Design and Technology**      **cont..**



- 
- Health Care Assistant
  - Heavy Mechanical Trades
  - Killarney Enhanced Trades
  - Metal Fabricator
  - Millwright
  - Motorcycle Mechanic and Power Equipment
  - Painting and Decorating
  - Plumbing
  - Professional Cook 1
  - Trades Sampler BCIT
  - Tupper Tech Explore Trades Sampler

Trades Options Continued....

# Contact

Train in Trades & Youth WORK in  
Trades Contact:

Mark Reid

- e: [mreid@vsb.bc.ca](mailto:mreid@vsb.bc.ca)
- [Youth WORK in Trades \(vsb.bc.ca\)](http://vsb.bc.ca)



# Post-Secondary Options

- ▶ Direct entry into the workforce
  - Acquire job skills
- ▶ Alternative options
  - Volunteer, travel, take courses, explore opportunities
- ▶ Continue education at a post-secondary institution:
  - University or college
  - Vocational school
  - Technology institute



# Post-Secondary Planning

Usually, the most competitive programs to enter are at universities with a few exceptions. University admission in Canada is usually based on:

- **Admission Average of Marks** – may consider 4 – 6 subjects at the Gr. 12 level and may consider Gr. 11 marks for early admissions. These are usually the traditional ‘academic’ courses (English, Math, Sciences, Languages, Social Sciences, AP courses)
- **English Studies 12** (English 11 may be used for early admissions/conditional offers of admission but all final admissions decisions are based on grade 12 courses)
- **Pre-Calculus 11** completion (Foundations of Math 11 & 12 may satisfy for some programs; Pre-Calculus 12 required for others)
- **Broad-based Admission Process** – essays, portfolios, videos, etc...

*Please start your research early to ensure you meet admission requirements*



# Post-Secondary -Grade 11 Marks

Grade 11 academic course work can factor into admissions decisions at universities in different ways, depending on the school and program you are considering. This is why it's important to do your research. Please consider the following:

- \* Some PSI's will consider core Gr. 11 course marks as **general entry requirements** (eg: English 11, Pre-calculus 11) though they carry less weight than Gr. 12 required academic courses (eg: UBC, SFU, UVIC)
- \* **Gr. 11 marks may be considered if a required Gr. 12 course mark is unavailable** (i.e. to be taken in Semester 2 of Gr. 12), the PSI may look at the mark you earned in the equivalent Gr. 11 course

# Basic University Entrance Requirements

Every post-secondary has different admission requirements. Please do your research on this.

Some current examples:

- UBC: Grade 11 requirements & 6 academic/non-academic grade 12 courses. It is imperative to check the website
- SFU: Grade 11 requirements & Evaluation based on 5 classes (List A & List B Classes). It is imperative to check the website

Ways to find more information:

- Check the post-secondary websites
- Contact admission advisors from post-secondary schools



# Post-Secondary Planning

## General Admission considerations

SCIENCE	ENGINEERING	ARTS	BUSINESS	ONTARIO
AN ENGLISH 11 + ENGLISH STUDIES 12	AN ENGLISH 11 + ENGLISH STUDIES 12	AN ENGLISH 11 + ENGLISH STUDIES 12	AN ENGLISH 11 + ENGLISH STUDIES 12	AN ENGLISH 11 + ENGLISH STUDIES 12
PRE-CALCULUS 11+ PRE-CALCULUS 12	PRE-CALCULUS 11+ PRE-CALCULUS 12	PRE-CALCULUS 11 OR FOUNDATIONS 11 + 12	PRE-CALCULUS 11 + PRE-CALCULUS 12	SCIENCE, ENGINEERING & BUSINESS PROGRAMS OFTEN REQUIRE CALCULUS 12
CHEMISTRY 11 + PHYSICS 11	CHEMISTRY 11 + PHYSICS 11	3-5 OTHER ADMISSIBLE COURSES	SET MINIMUM GRADES IN ENGLISH 12 & PRE-CALCULUS 12	SOME COMPETITIVE PROGRAMS HAVE RULES AROUND RE-TAKES
A SCIENCE 12 + A SCIENCE 12	CHEMISTRY 12 + PHYSICS 12		SUPPLEMENTAL APPLICATION REQUIRED	
1-2 OTHER ADMISSIBLE COURSES	1-2 OTHER ADMISSIBLE COURSES			

# POST-SECONDARY PLANNING

## Broad Based Admissions

### FINE ARTS

usually includes a portfolio, written submission, or an audition this can be in-person or sometimes recorded

### BUSINESS

often requires information about leadership, volunteering, community work, references, and may have a video submission or video interview

### ENGINEERING

student profile that highlights community activities, volunteerism and leadership, this can be a combination of written submission and/or a video interview

### UBC

for all programs, students are required to write up to 6 or more paragraphs, that refer to life experiences, community involvement, leadership, volunteering, and to provide references  
<https://youtu.be/IRolpNKomRo>

# SFU: Admission Details

- **Grade 11 Requirements:**
- English 11, Science 11, Math 11 (minimum 60%), Social Studies 11 or a Social Studies 12 course
- **Grade 12 Requirements:**
- Minimum final grade of 70% in English Studies 12
- Minimum of 5 Grade 12 courses from SFU's approved course list (including English Studies 12).
- Two lists of approved grade 11 and grade 12 courses for each program/faculty:
- **List A:** grade 12 courses required or recommended for the program
- **List B:** includes additional approved grade 11 and grade 12 courses
- Note: Admission evaluation is based on all approved grade 11 and grade 12 courses that a student takes, with **greater emphasis on List A courses**, and allowances made for students who have completed 6 or more grade 12 courses.



# UBC: Admission Details

- Breadth: UBC will look at your grades in nearly ALL your academic Gr.11 and Gr.12. They will drop your lowest Gr.11 or Gr.12 course so it is safe to experiment.
- Depth: UBC will look at “rigour” of course work and overall course load to ensure suitability and preparedness. They will pay particular attention to courses related to what you want to study. If you have the course at both the Gr.11 and Gr.12 level, more emphasis will be placed on the Gr.12 grade.
- Relevancy: Pre-requisites and program requirements are not changing. You do not have to take different or more courses than in the past. Take courses in secondary school that are related to what you want to study at UBC. Doing so will increase your chances of admission.
- Individual Context: Looking at student engagement, accomplishments, and personal circumstance through the Personal Profile. They want to hear the student’s genuine voice and are looking for substance.



UBC has expanded the ways in which they consider students for admission. When considering a prospective applicant, they consider the following:

- Overall Average calculated on marks from all courses in Grades 11 and 12 (excluding PE, Applied Skills, Skills, Community Service, CLC 12). Note: a maximum of 2 fine or performing arts courses can be included each year.
- Core average: calculated on relevant program related courses taken in grades 11 and 12. Note: this will always include English 11 and 12.
- Having the highest grades is not the only way to get in – challenging yourself or taking a well-rounded course load can also be beneficial. The Personal Profile can also tip the balance.



# University Admissions Links

UBC



SFU



UVic



Langara







# BCIT

- Applied and Natural Science
- Business and Media
- Computing and Info Tech
- Engineering
- Health Sciences
- Trades and Apprenticeship

- Big Info Night @ BCIT
- Feb 19 4:00 – 7:00 p.m.  
@Burnaby Campus

\*\*Admission requirements vary  
for each program

# Langara College

Bachelor Degrees (Business, Nursing, Bioinformatics, Recreation Management), Certificates, Diplomas, University Transfer, Academic Upgrading

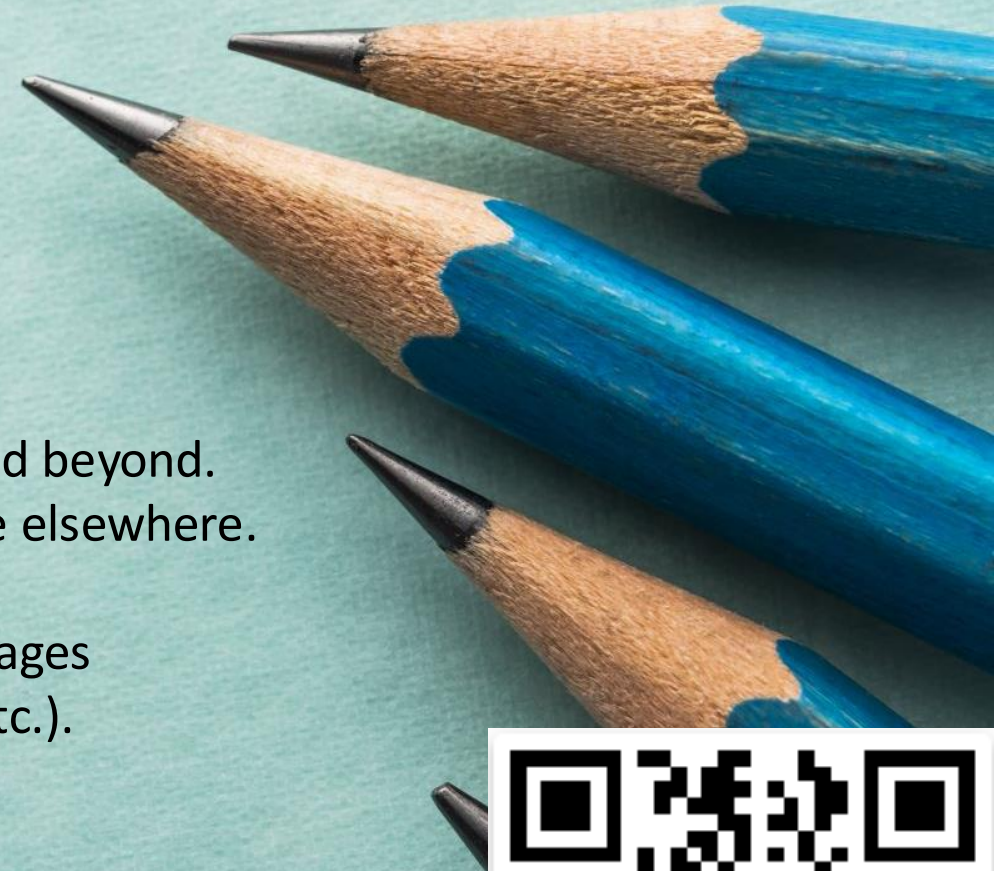
## University Transfer:

- Take university courses transferable to other institutions in B.C. and beyond.
- Complete 1 or 2 years of university studies, then apply to continue elsewhere.
- Explore subjects and identify areas of interest and strength.
- This is a great first choice or back-up and there are several advantages compared to universities (transition, class size, instruction, cost, etc.).

## Admissions:

**Open Enrolment** –Apply for these programs and you're in. Apply earlier to get the courses you need and want.

**Limited Enrolment** –Entry into these programs may be competitive or at least limited by the date of your application because they will fill.



# Post-Secondary Planning: American Schools

Admission to many American colleges/universities can be very competitive, and they will consider a broad range of factors:

- Course Marks – entire school record from grades 9-12.
- Standardized Assessments – often require SAT or ACT scores.
- Advanced Placement (AP) Examinations – standardized assessments that allow institutions to compare applicants.
- Broad-based Factors – leadership, volunteer work, community involvement and school activities.
- References – information regarding performance, character and extracurricular activities. **References are usually completed by the school counsellor and one subject teacher of your choosing.**



## **Getting Your School Records**

VISIT THE STUDENT TRANSCRIPT SERVICE (STS) AT  
**[HTTP://WWW.STUDENTTRANSCRIPTS.GOV.BC.CA](http://www.studenttranscripts.gov.bc.ca)**

TO CREATE AN ACCOUNT YOU WILL NEED YOUR  
PROVINCIAL EDUCATION NUMBER (PEN). THIS CAN BE  
FOUND ON YOUR REPORT CARD.

# Summer School: Completion Courses

Completion courses at the Grade 11 & 12 level can be taken at Summer School. (4 credit course)

In-person Summer School courses are done very quickly and are fast paced, **3-1/2 hours per day for 5 weeks, beginning in early July.**

Taking two Summer School courses is **not recommended**

Students must submit a Summer School Request Form signed by a parent/guardian, prior to registration.

International students will need permission from International Education to sign up for Summer School.

Summer School registration takes place in in early May; Check Teams- Registration is online and fills quickly so please make plans prior to opening.



## POINT GREY SECONDARY SCHOOL

stayw@n  
5350 East Boulevard, Vancouver, BC, V6M 3V2 • Tel. (604) 713-8220 • Fax (604) 713-8218  
<https://www.vsb.bc.ca/schools/point-grey/Pages/default.aspx>

### Summer School Course Request Form

The student \_\_\_\_\_, \_\_\_\_\_  
Full Name Student Number

plans to take \_\_\_\_\_ in Summer School for  
Name of Course  
completion credit. This course is now no longer being requested for the next  
school year at P.G. In its place please schedule \_\_\_\_\_  
Name of Course

Students register themselves for Summer School courses. Doing so early will increase the chance of securing a seat (registration usually opens at the beginning of May).

If these plans change, either because registration for the course is not successful, or the course is dropped or otherwise not successfully completed, rescheduling this same course at Point Grey in September may not be possible. If this course is not completed, please inform the grade councillor right away in order to provide the best chance to adjust the student's timetable to include this course at P.G. next school year.

\_\_\_\_\_  
Parent/Guardian signature

\_\_\_\_\_  
Student signature

\_\_\_\_\_  
Date

Please return this completed and signed letter to your Grade Counsellor as soon as possible in order to have this information taken into account during the timetabling process.

# Online Courses



## POINT GREY SECONDARY SCHOOL

stejw@n  
5350 East Boulevard, Vancouver, BC, V6M 3V2 • Tel. (604) 713-8220 • Fax (604) 713-8218  
<https://www.vsb.bc.ca/schools/point-grey/Pages/default.aspx>

### Online Course Request Form

Please be advised that \_\_\_\_\_, plans to complete  
Full Student Name Student Number  
the course(s) listed below through an online school.

Name of Course	Name of Institution (VLN, EBUS, etc.)	Expected Completion Date

The above mentioned course(s) is/are not being taken at Point Grey, and the student will not receive any instruction or assistance in these courses at Point Grey. Students must register themselves and are required to complete the following minimum number of on-timetable courses at Point Grey:

Grade	Minimum Course Requirement
8 through 10	8 PG courses on timetable
11	8 PG courses on timetable OR 7 PG courses on timetable + 1 online
12	7 PG courses on timetable OR 6 PG courses on timetable + 1 online

#### Please also note the following:

- A student cannot be enrolled in the same course on-line and at school.
- Online courses are not included in Honour Roll calculations.
- Online course marks may or may not be noted on the Report Card. Our school does not monitor the progress of these courses. Due to the independent and self-paced nature of these courses, students themselves need to ensure they complete a course when expected and that the course credit is noted on student transcripts.
- Especially in the Gr. 12 year, issues may arise when courses required for graduation or for post-secondary admission are not completed in a timely manner. These institutions may impose specific deadlines for progress or completion of online courses.

Please contact your son/daughter's grade counsellor if you have any questions/concerns.

By signing below, I give permission for the course(s) listed above to be done through an online school.

Reason for request and other details:

\_\_\_\_\_

Parent/Guardian Signature

Date

- Complete the “Online Course Request Form” & return to your counsellor
- Register yourself when ready and able to start the course
- Success requires organization, self-discipline and effective problem-solving
- Keep track of deadlines, book test times, and complete by the assigned end date
- Taken in addition to your 6+ courses on timetable at Point Grey

# AP Courses

**Advanced Placement courses are rigorous and university level**, we want to ensure that students are well prepared and have demonstrated the necessary work habits to thrive in the fast paced and demanding AP environment.

**AP courses can be used for admissions** as students will earn a school mark for the course, as they would in any other course.

Students can opt to write the AP exam in May to earn advance placement in their university studies if they earn a particular score on their AP exam and, if the institution accepts AP credits. Note: AP test scores are not included on student transcripts.

- Students request AP courses through Course Planning
- Students pick up **Student Application Form** and **Teacher Nomination Form** in February as they will be available in the Counselling Suite and on the school website.
- Forms are due back to me by **Friday, February 28 by 9:00 am.**
- AP courses will run next school year if enough students request them.

# Tools to Help You with Course Planning



For instructions on how to make your selections online, please visit: <https://www.vsb.bc.ca/point-grey/page/11898/course-planning>

**RESEARCH is KEY** in the grade 12 year. Consider consulting and discussing with family, PSI resources, counsellor, teachers, friends, older students, etc.

The Course Planning Guide is available on the school website to review before entering your course requests.





Home / Guidance and Support / Course Planning

# Guidance and Support

Guidance and Support ▾

Career and Post Secondary

Code of Conduct

Student Threat Risk Assessment Protocol

Course Planning

Multicultural Liaison Workers

School Policies and Procedures

Student Council

Student Safety

VISA Students

Severe Weather

About Us >

Families >

## Course Planning


Oct 17, 2022

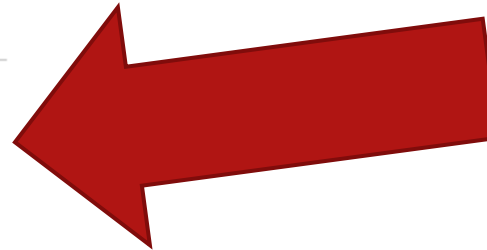
[Course Planning Guide 2022, 2023.pdf](#)

[Course Planning Guide 2023-2024.pdf](#)

[Counselling Course Planning Forms & Presentations](#)

### Resources

 [Course Planning Guide 2023-2024.pdf](#)



# Course Planning Form

**COURSE PLANNING FORM : ENTERING GRADE 12**  
**DUE DATE FOR COURSE PLANNING FORM TO COUNSELLOR**

Last Name:	Called Name:	Legal First Name:
Student #	Student Email:	Student Cell #
Mini School Student: <input type="checkbox"/>	International Student: <input type="checkbox"/>	ELL Student: <input type="checkbox"/>

## GRADUATION CHECKLIST - MINIMUM REQUIREMENTS

The BC Ministry of Education requires students in Grades 10 - 12 to complete 80 credits  
 Full year courses are worth 4 credits each, therefore a total of 20 courses is required for graduation

Indicate below the courses you have completed and those you believe you will complete this current year:

• English 10 <input type="checkbox"/>	• An English 11 (Indigenous-Focused) OR an English 11 <input type="checkbox"/>	• A Grade 12 course <input type="checkbox"/>
• A Mathematics 10 <input type="checkbox"/>	• A Mathematics 11 and/or 12 <input type="checkbox"/>	• A Grade 12 course <input type="checkbox"/>
• Physical & Health Education 10 <input type="checkbox"/>	• A Science 11 and/or 12 <input type="checkbox"/>	• A Grade 10, 11, or 12 elective <input type="checkbox"/>
• Career Life Education 10 <input type="checkbox"/>	• Socials Studies 12 (Indigenous-Focused) OR a Social Studies 11 or 12 <input type="checkbox"/>	• A Grade 10, 11, or 12 elective <input type="checkbox"/>
• Science 10 <input type="checkbox"/>	• English Studies 12 <input type="checkbox"/>	• A Grade 10, 11, or 12 elective <input type="checkbox"/>
• Social Studies 10 <input type="checkbox"/>	• A Grade 12 course <input type="checkbox"/>	• A Grade 10, 11, or 12 elective <input type="checkbox"/>
• One Arts Education <u>or</u> Applied Design, Skills & Technology course at grade 10, 11, or 12 <input type="checkbox"/>	• Career Life Connections 12 <input type="checkbox"/>	

In addition, students must also complete three Provincial Graduation Assessments:

- Grade 10 Literacy and Numeracy Assessments
- Grade 12 Literacy Assessment

Completion of these assessments will be documented on the students' transcripts

Post Secondary Plan:  Apprenticeship / Trades  College  University  Work  Gap Year

Each plan will have specific requirements. Ensure that your research includes identifying which courses you need to take to satisfy graduation and any post-secondary institution requirements.

COURSE REQUESTS		ALL GRADE 12 STUDENTS WILL HAVE 7 COURSES
Current Year Courses	First Choices for Next Year	ALTERNATE COURSES
1.	1.	• Please list 3 alternate courses in case a first choice course fails or is in conflict with another first choice. • Rank alternate choices by importance.
2.	2.	
3.	3.	
4.	4.	
5.	5.	
6.	6.	
7.	7.	
8.	8.	1. _____ in place of: _____ 2. _____ in place of: _____ 3. _____ in place of: _____
9.	9.	Please see reverse side of page to view a list of courses available for next year →

Student Signature: \_\_\_\_\_ Date: \_\_\_\_\_  
 "I have checked and approve the above course requests made by my child"  
 Parent Signature: \_\_\_\_\_ Date: \_\_\_\_\_

1

- Fill out **ALL sections** of the **Course Planning Form** and ensure that it matches the courses you selected on-line.

2

- Read the course descriptions and requirements in the Course Planning Guide.

3

- Ensure **you** and **your parent/guardian sign** the form, and that it is returned to my office by **Friday, February 21, 2025**.

4

- Submit the "**Letter of Intent for Summer School, AP application form (due February 28) or Online Course Request**" form(s) as soon as your plans are firm, and I will adjust your course requests.

# Entering courses into MyEd

- ✓ Instructions to be posted on grade 11 Teams page
- ✓ See Ms. Sim if you have questions
- ✓ Enter before Feb 21st

The screenshot shows the MyEducationBC website. At the top, there are navigation tabs for 'Academics', 'Groups', and 'Calendar'. Below this is a banner for 'Education BC PRODUCTION' featuring the 'BRITISH COLUMBIA MyEducationBC' logo and a photograph of a family (a man, a woman, and two children) looking at a laptop. A red-bordered box on the left contains the text 'Click on My Info' and 'Columbia.'. On the right side, there is a 'Published Reports' section with a table header showing 'Filename' and 'DateUp'. Below this is a 'System Maintenance & Ann' section with a 'Welcome to M' heading and a 'Production Infrastruct' section with the text 'Please ensure that District FT'.



# Course Planning Process & Timeline

- ▶ Course Planning requests submitted into MyEd, and the Course Planning Form -signed and returned to counsellor by February 21, 2025
- ▶ Discussions with students as needed February to April
- ▶ Student schedules randomly built based upon course requests May to June
- ▶ Timetabling conflicts resolved from June to September
- ▶ Making changes to courses selected will be limited, and if requested late, may not be possible due to course conflicts or courses being full.