

## PARKING DATA

Note: In accordance with TDM report

		Requirement	Proposed	Note
<b>Parking</b>	<b>School</b>	0	2	
	<b>School - Accessible</b>	3	4	
<b>Pick-Up &amp; Drop-Off (PUDO)</b>	<b>School</b>	TBD	5	Numbers of required PUDO will be reviewed further with City Engineering
<b>Loading</b>	<b>Class B Loading</b> (basis: 1 per 2800 m2 GFA per Parking By-Law 5.2.3)	2	1	
<b>Bicycles, class A</b>	<b>Class A Bike Spaces</b> Basis: 1 per 17 staff per Parking By-Law 6.2.2.3 plus additional 30% for TDM Plan B, or minimum 3 spaces, thus 3 added spaces <b>62 staff / 17 = 4 + 3 = 7</b>	7	7	
	<b>Bicycle Lockers</b> Basis: 20% for TDM Plan B, or minimum 1, thus 2 bicycle lockers <b>7 x 20% = 1.4 = 2</b>	2	2	These are part of the 7 Class A required
	<b>Oversized Spaces</b> Basis: 10% for TDM Plan B, or minimum 1, thus 1 oversized space <b>7 x 10% = 0.7 = 1</b>	1	1	These are part of the 7 Class A required
<b>Bicycles, class B</b>	<b>Class B Bike Spaces</b> Basis: 1 per 20 students per Parking By-Law 6.2.2.3	32	32	Covered
<b>End of Trip Facilities</b>	<b>Clothing Lockers</b> Basis: Per Parking By-law 6.5.1, 1.4 lockers per Class A spaces, thus 10 of which half, thus 5, must be full height <b>7 x 1.4 = 10</b>	10	10	
	<b>Grooming Stations</b>	2	2	
<b>Garbage + Recycling</b>	<b>Facilities</b>	1 garbage & recycling area		

## BUILDING CODE DATA

**Building Code** V.B.B.L. 2025 Vancouver Building Bylaw  
**Effective since** 15 September, 2025

	Proposed Development
<b>Number of Buildings</b>	1
<b>First Storey</b>	Level 1
<b>Building Height (storeys)</b>	4 storeys
<b>Building Area (m<sup>2</sup>)</b>	5,545 m <sup>2</sup>
<b>No. of Streets Facing</b>	1
<b>Construction Type</b>	Non-combustible
<b>Major Occupancies</b>	Group A, Division 2

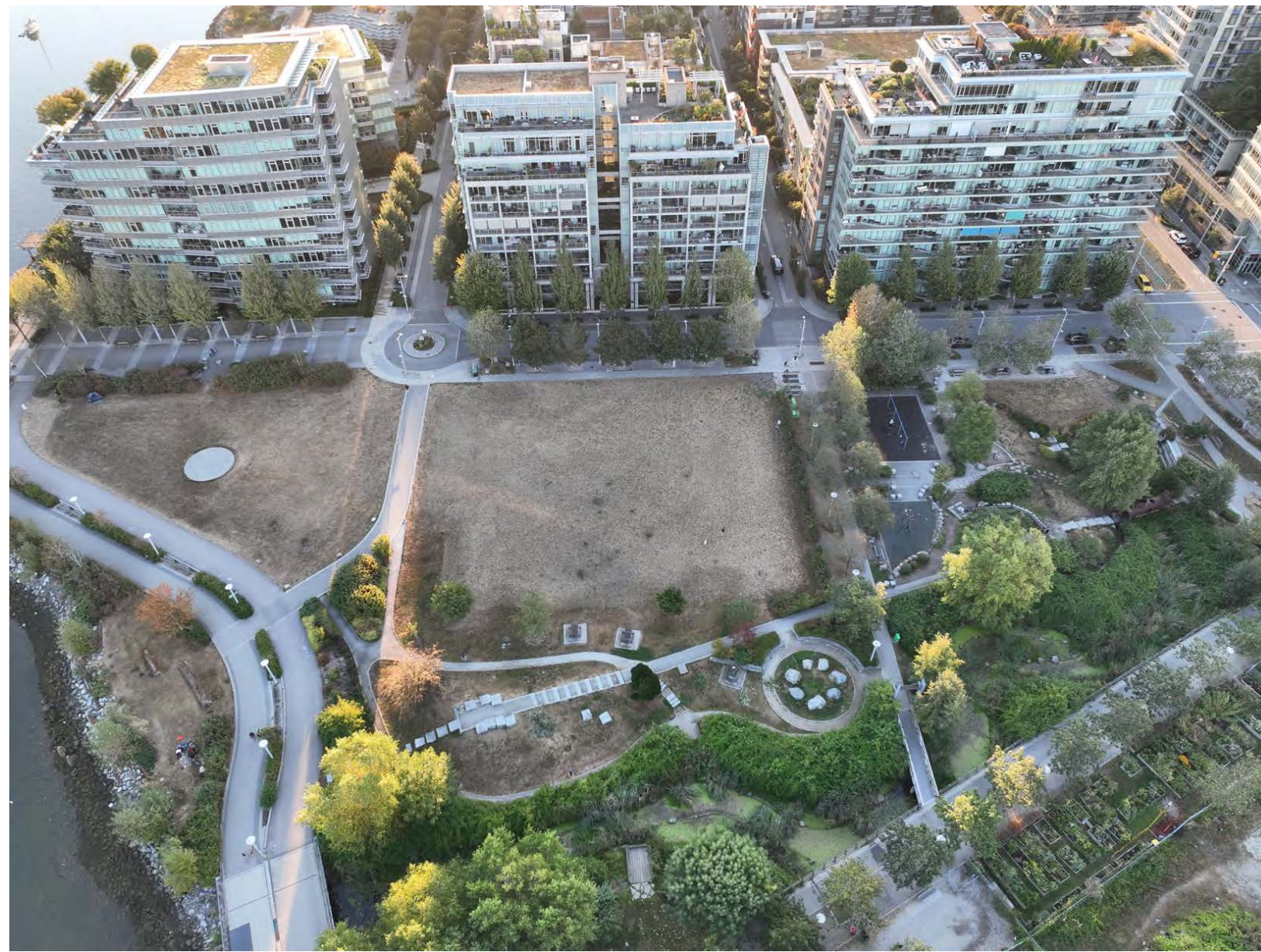
## PROJECT DATA

<b>Civic Address</b>	Columbia Street address To Be Confirmed (TBC) (address currently 215 1 <sup>st</sup> Avenue West) PS-2022-00385	
<b>ODP</b>	Southeast False Creek – Official Development Plan (2007)	
<b>Zoning</b>	CD-1 (454), Sub-Area 1 (school site) Olympic Village By-Law No. 9454	
<b>Use</b>	Elementary School with gymnasium and community facilities	
<b>Occupants</b>	Students	630
	Staff	62
	<b>Total</b>	<b>692</b>
<b>Site Area (m<sup>2</sup>)</b>	2,700	
<b>Easements</b>	1.867 m wide SRW inside east property line, occupied by COV sidewalk	
<b>Floodplain Construction Level (FCL) (m)</b>	4.8	

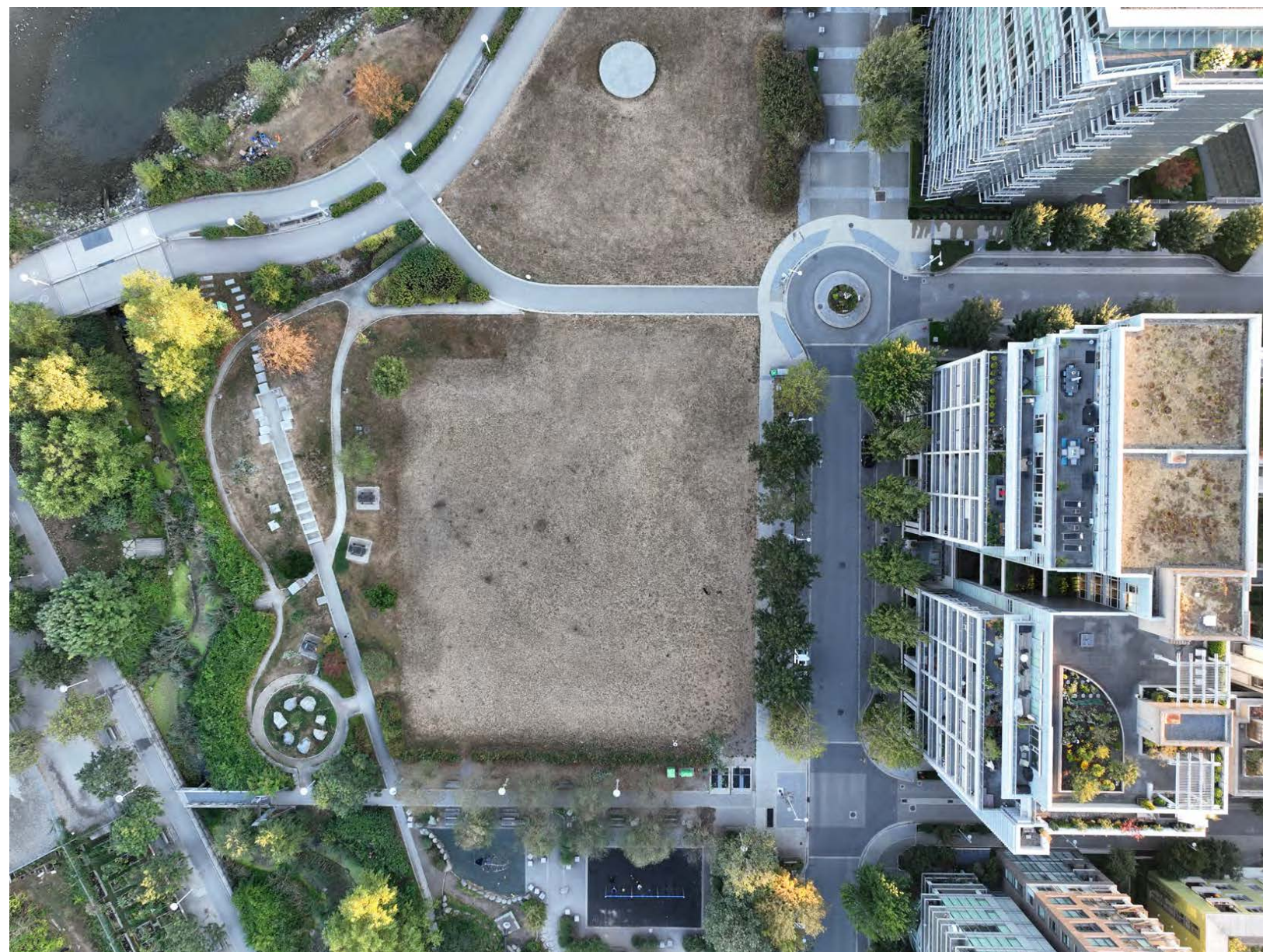
## ZONING DATA

	Existing Zoning	Proposed Development
<b>Gross Floor Areas (m<sup>2</sup>)</b>	School	minimum 3,700
	Outdoor areas covered at grade	450
	Rooftop play uncovered	-
	Rooftop area covered	310
	<b>FSR - Floor Area (m<sup>2</sup>)</b> (for FSR calculation, including: occupied roof and outdoor areas below soffit or canopy)	-
<b>Floor Space Ratio</b>	-	2.7
<b>Lot Coverage</b>	-	55%
<b>Building Height (m)</b> (measured above base surface to the top of the roof slab above the uppermost habitable floor excluding parapet wall)	13.5	17.6
<b>Height Exclusions</b>	Roof top covered area, elevator overrun, guard structure and overhead ball control screens	6.4
<b>Number of Storeys</b>	3 (anticipated)	4
<b>Total Height</b> Including rooftop covered spaces and rooftop guard system	-	24.0
<b>Setbacks (m)</b>	Front (east)	-
	Rear (west)	0
	Side (north, south)	0

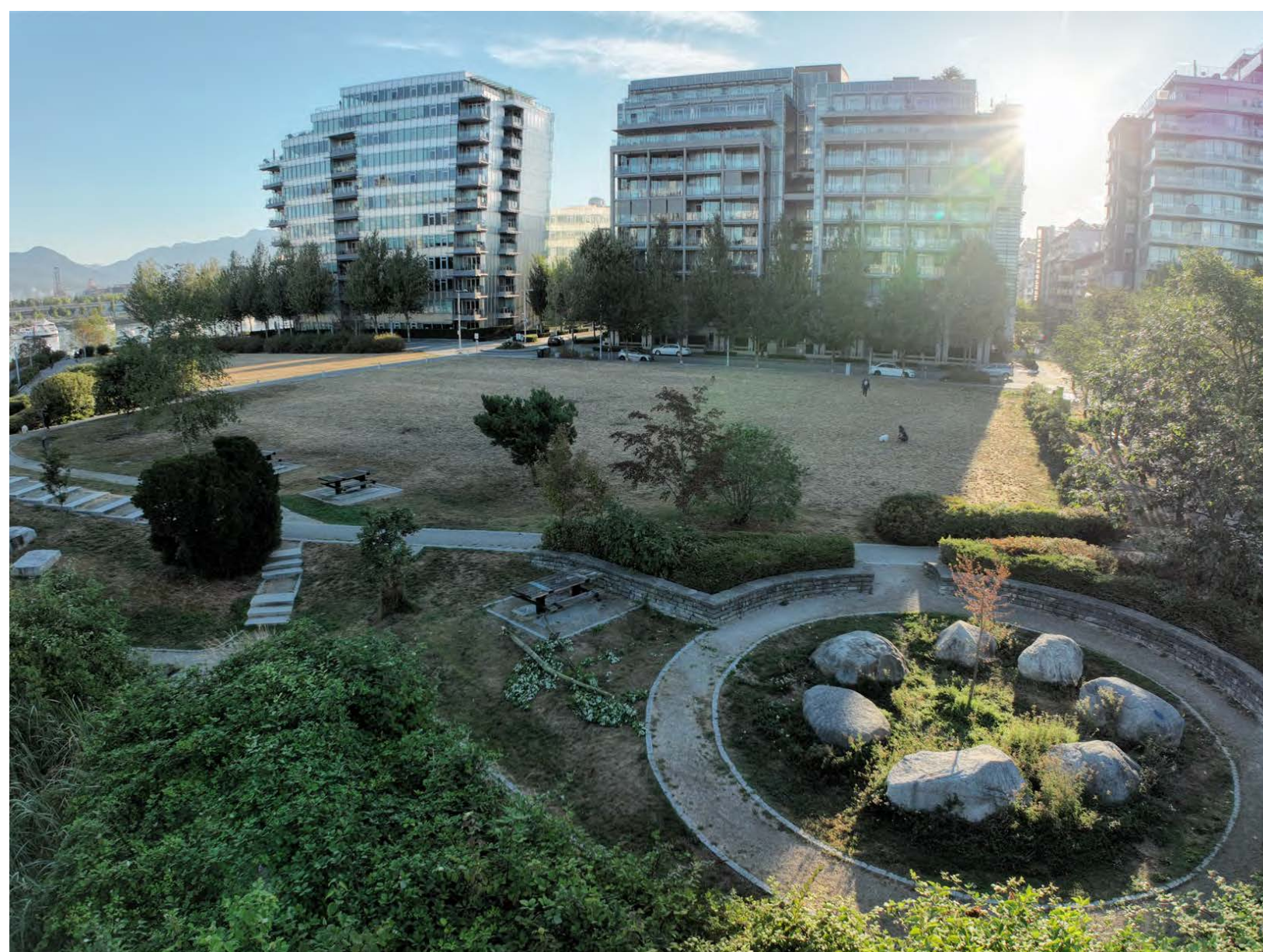
# PROJECT DATA



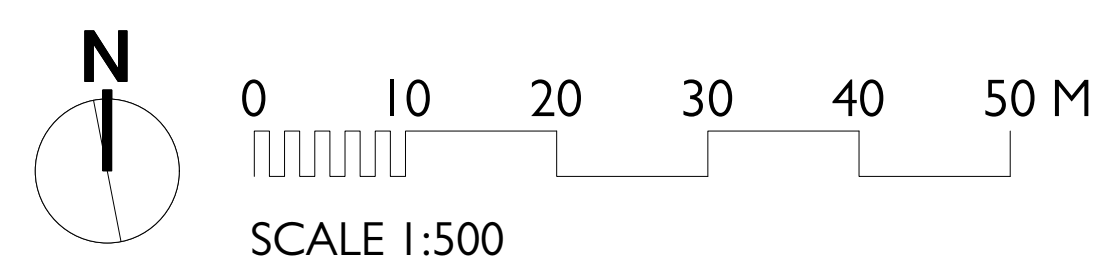
AERIAL VIEW OF THE PROJECT SITE FROM WEST



OVERHEAD VIEW OF PROJECT SITE



AT-GRADE VIEW OF PROJECT SITE FROM SW CORNER



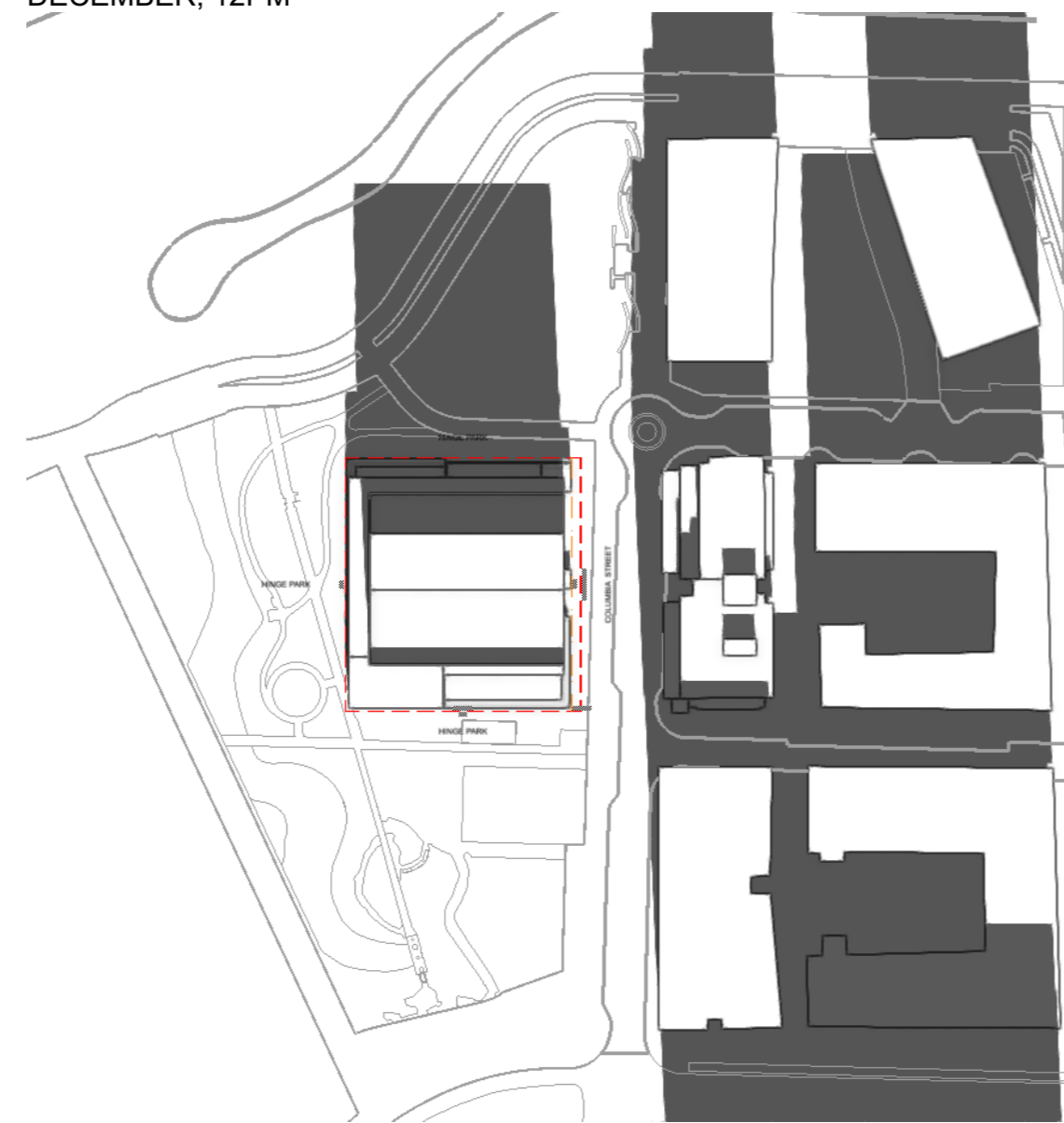
# CONTEXT PLAN

REV	Y	M	D	ISSUE
CHECKED BY	CB/CD	PROJECT ID	2408	
DRAWN BY	CB/CD	CAD FILE NAME	2408-01-02-03-04-05-06-07-08-09-10-11-12-13-14-15-16-17-18-19-20-21-22-23-24-25-26-27-28-29-30-31-32-33-34-35-36-37-38-39-40-41-42-43-44-45-46-47-48-49-50-51-52-53-54-55-56-57-58-59-60-61-62-63-64-65-66-67-68-69-70-71-72-73-74-75-76-77-78-79-80-81-82-83-84-85-86-87-88-89-90-91-92-93-94-95-96-97-98-99-100-101-102-103-104-105-106-107-108-109-110-111-112-113-114-115-116-117-118-119-120-121-122-123-124-125-126-127-128-129-130-131-132-133-134-135-136-137-138-139-140-141-142-143-144-145-146-147-148-149-150-151-152-153-154-155-156-157-158-159-160-161-162-163-164-165-166-167-168-169-170-171-172-173-174-175-176-177-178-179-180-181-182-183-184-185-186-187-188-189-190-191-192-193-194-195-196-197-198-199-200-201-202-203-204-205-206-207-208-209-210-211-212-213-214-215-216-217-218-219-220-221-222-223-224-225-226-227-228-229-230-231-232-233-234-235-236-237-238-239-240-241-242-243-244-245-246-247-248-249-250-251-252-253-254-255-256-257-258-259-260-261-262-263-264-265-266-267-268-269-270-271-272-273-274-275-276-277-278-279-280-281-282-283-284-285-286-287-288-289-290-291-292-293-294-295-296-297-298-299-300-301-302-303-304-305-306-307-308-309-310-311-312-313-314-315-316-317-318-319-320-321-322-323-324-325-326-327-328-329-330-331-332-333-334-335-336-337-338-339-340-341-342-343-344-345-346-347-348-349-350-351-352-353-354-355-356-357-358-359-360-361-362-363-364-365-366-367-368-369-370-371-372-373-374-375-376-377-378-379-380-381-382-383-384-385-386-387-388-389-390-391-392-393-394-395-396-397-398-399-400-401-402-403-404-405-406-407-408-409-410-411-412-413-414-415-416-417-418-419-420-421-422-423-424-425-426-427-428-429-430-431-432-433-434-435-436-437-438-439-440-441-442-443-444-445-446-447-448-449-450-451-452-453-454-455-456-457-458-459-460-461-462-463-464-465-466-467-468-469-470-471-472-473-474-475-476-477-478-479-480-481-482-483-484-485-486-487-488-489-490-491-492-493-494-495-496-497-498-499-500-501-502-503-504-505-506-507-508-509-510-511-512-513-514-515-516-517-518-519-520-521-522-523-524-525-526-527-528-529-530-531-532-533-534-535-536-537-538-539-540-541-542-543-544-545-546-547-548-549-550-551-552-553-554-555-556-557-558-559-560-561-562-563-564-565-566-567-568-569-570-571-572-573-574-575-576-577-578-579-580-581-582-583-584-585-586-587-588-589-590-591-592-593-594-595-596-597-598-599-600-601-602-603-604-605-606-607-608-609-610-611-612-613-614-615-616-617-618-619-620-621-622-623-624-625-626-627-628-629-630-631-632-633-634-635-636-637-638-639-640-641-642-643-644-645-646-647-648-649-650-651-652-653-654-655-656-657-658-659-660-661-662-663-664-665-666-667-668-669-670-671-672-673-674-675-676-677-678-679-680-681-682-683-684-685-686-687-688-689-690-691-692-693-694-695-696-697-698-699-700-701-702-703-704-705-706-707-708-709-710-711-712-713-714-715-716-717-718-719-720-721-722-723-724-725-726-727-728-729-730-731-732-733-734-735-736-737-738-739-740-741-742-743-744-745-746-747-748-749-750-751-752-753-754-755-756-757-758-759-760-761-762-763-764-765-766-767-768-769-770-771-772-773-774-775-776-777-778-779-780-781-782-783-784-785-786-787-788-789-790-791-792-793-794-795-796-797-798-799-800-801-802-803-804-805-806-807-808-809-810-811-812-813-814-815-816-817-818-819-820-821-822-823-824-825-826-827-828-829-830-831-832-833-834-835-836-837-838-839-840-841-842-843-844-845-846-847-848-849-850-851-852-853-854-855-856-857-858-859-860-861-862-863-864-865-866-867-868-869-870-871-872-873-874-875-876-877-878-879-880-881-882-883-884-885-886-887-888-889-890-891-892-893-894-895-896-897-898-899-900-901-902-903-904-905-906-907-908-909-910-911-912-913-914-915-916-917-918-919-920-921-922-923-924-925-926-927-928-929-930-931-932-933-934-935-936-937-938-939-940-941-942-943-944-945-946-947-948-949-950-951-952-953-954-955-956-957-958-959-960-961-962-963-964-965-966-967-968-969-970-971-972-973-974-975-976-977-978-979-980-981-982-983-984-985-986-987-988-989-990-991-992-993-994-995-996-997-998-999-1000-1001-1002-1003-1004-1005-1006-1007-1008-1009-1010-1011-1012-1013-1014-1015-1016-1017-1018-1019-1020-1021-1022-1023-1024-1025-1026-1027-1028-1029-1030-1031-1032-1033-1034-1035-1036-1037-1038-1039-1040-1041-1042-1043-1044-1045-1046-1047-1048-1049-1050-1051-1052-1053-1054-1055-1056-1057-1058-1059-1060-1061-1062-1063-1064-1065-1066-1067-1068-1069-1070-1071-1072-1073-1074-1075-1076-1077-1078-1079-1080-1081-1082-1083-1084-1085-1086-1087-1088-1089-1090-1091-1092-1093-1094-1095-1096-1097-1098-1099-1100-1101-1102-1103-1104-1105-1106-1107-1108-1109-1110-1111-1112-1113-1114-1115-1116-1117-1118-1119-1120-1121-1122-1123-1124-1125-1126-1127-1128-1129-1130-1131-1132-1133-1134-1135-1136-1137-1138-1139-1140-1141-1142-1143-1144-1145-1146-1147-1148-1149-1150-1151-1152-1153-1154-1155-1156-1157-1158-1159-1160-1161-1162-1163-1164-1165-1166-1167-1168-1169-1170-1171-1172-1173-1174-1175-1176-1177-1178-1179-1180-1181-1182-1183-1184-1185-1186-1187-1188-1189-1190-1191-1192-1193-1194-1195-1196-1197-1198-1199-1200-1201-1202-1203-1204-1205-1206-1207-1208-1209-1210-1211-1212-1213-1214-1215-1216-1217-1218-1219-1220-1221-1222-1223-1224-1225-1226-1227-1228-1229-1230-1231-1232-1233-1234-1235-1236-1237-1238-1239-1240-1241-1242-1243-1244-1245-1246-1247-1248-1249-1250-1251-1252-1253-1254-1255-1256-1257-1258-1259-1260-1261-1262-1263-1264-1265-1266-1267-1268-1269-1270-1271-1272-1273-1274-1275-1276-1277-1278-1279-1280-1281-1282-1283-1284-1285-1286-1287-1288-1289-1290-1291-1292-1293-1294-1295-1296-1297-1298-1299-1300-1301-1302-1303-1304-1305-1306-1307-1308-1309-1310-1311-1312-1313-1314-1315-1316-1317-1318-1319-1320-1321-1322-1323-1324-1325-1326-1327-1328-1329-1330-1331-1332-1333-1334-1335-1336-1337-1338-1339-1340-1341-1342-1343-1344-1345-1346-1347-1348-1349-1350-1351-1352-1353-1354-1355-1356-1357-1358-1359-1360-1361-1362-1363-1364-1365-1366-1367-1368-1369-1370-1371-1372-1373-1374-1375-1376-1377-1378-1379-1380-1381-1382-1383-1384-1385-1386-1387-1388-1389-1390-1391-1392-1393-1394-1395-1396-1397-1398-1399-1400-1401-1402-1403-1404-1405-1406-1407-1408-1409-1410-1411-1412-1413-1414-1415-1416-1417-1418-1419-1420-1421-1422-1423-1424-1425-1426-1427-1428-1429-1430-1431-1432-1433-1434-1435-1436-1437-1438-1439-1440-1441-1442-1443-1444-1445-1446-1447-1448-1449-1450-1451-1452-1453-1454-1455-1456-1457-1458-1459-1460-1461-1462-1463-1464-1465-1466-1467-1468-1469-1470-1471-1472-1473-1474-1475-1476-1477-1478-1479-1480-1481-1482-1483-1484-1485-1486-1487-1488-1489-1490-1491-1492-1493-1494-1495-1496-1497-1498-1499-1500-1501-1502-1503-1504-1505-1506-1507-1508-1509-1510-1511-1512-1513-1514-1515-1516-1517-1518-1519-1520-1521-1522-1523-1524-1525-1526-1527-1528-1529-1530-1531-1532-1533-1534-1535-1536-1537-1538-1539-1540-1541-1542-1543-1544-1545-1546-1547-1548-1549-1550-1551-1552-1553-1554-1555-1556-1557-1558-1559-1560-1561-1562-1563-1564-1565-1566-1567-1568-1569-1570-1571-1572-1573-1574-1575-1576-1577-1578-1579-1580-1581-1582-1583-1584-1585-1586-1587-1588-1589-1590-1591-1592-1593-1594-1595-1596-1597-1598-1599-1600-1601-1602-1603-1604-1605-1606-1607-1608-1609-1610-1611-1612-1613-1614-1615-1616-1617-1618-1619-1620-1621-1622-1623-1624-1625-1626-1627-1628-1629-1630-1631-1632-1633-1634-1635-1636-1637-1638-1639-1640-1641-1642-1643-1644-1645-1646-1647-1648-1649-1650-1651-1652-1653-1654-1655-1656-1657-1658-1659-1660-1661-1662-1663-1664-1665-1666-1667-1668-1669-1670-1671-1672-1673-1674-1675-1676-1677-1678-1679-1680-1681-1682-1683-1684-1685-1686-1687-1688-1689-1690-1691-1692-1693-1694-1695-1696-1697-1698-1699-1700-1701-1702-1703-1704-1705-1706-1707-1708-1709-1710-1711-1712-1713-1714-1715-1716-1717-1718-1719-1720-1721-1722-1723-1724-1725-1726-1727-1728-1729-1730-1731-1732-1733-1734-1735-1736-1737-1738-1739-1740-1741-1742-1743-1744-1745-1746-1747-1748-1749-1750-1751-1752-1753-1754-1755-1756-1757-1758-1759-1760-1761-1762-1763-1764-1765-1766-1767-1768-1769-1770-1771-1772-1773-1774-1775-1776-1777-1778-1779-1780-1781-1782-1783-1784-1785-1786-1787-1788-1789-1790-1791-1792-1793-1794-1795-1796-1797-1798-1799-1800-1801-1802-1803-1804-1805-1806-1807-1808-1809-1810-1811-1812-1813-1814-1815-1816-1817-1818-1819-1820-1821-1822-1823-1824-1825-1826-1827-1828-1829-1830-1831-1832-1833-1834-1835-1836-1837-1838-1839-1840-1841-1842-1843-1844-1845-1846-1847-1848-1849-1850-1851-1852-1853-1854-1855-1856-1857-1858-1859-1860-1861-1862-1863-1864-1865-1866-1867-1868-1869-1870-1871-1872-1873-1874-1875-1876-1877-1878-1879-1880-1881-1882-1883-1884-1885-1886-1887-1888-1889-1890-1891-1892-1893-1894-1895-1896-1897-1898-1899-1900-1901-1902-1903-1904-1905-1906-1907-1908-1909-1910-1911-1912-1913-1914-1915-1916-1917-1918-1919-1920-1921-1922-1923-1924-1925-1926-1927-1928-1929-1930-1931-1932-1933-1934-1935-1936-1937-1938-1939-1940-1941-1942-1943-1944-1945-1946-1947-1948-1949-1950-1951-1952-1953-1954-1955-1956-1957-1958-1959-1960-1961-1962-1963-1964-1965-1966-1967-1968-1969-1970-1971-1972-1973-1974-1975-1976-1977-1978-1979-1980-1981-1982-1983-1984-1985-1986-1987-1988-1989-1990-1991-1992-1993-1994-1995-1996-1997-1998-1999-2000-2001-2002-2003-2004-2005-2006-2007-2008-2009-2010-2011-2012-2013-2014-2015-2016-2017-2018-2019-2020-2021-2022-2023-2024-2025-2026-2027-2028-2029-2030-2031-2032-2033-2034-2035-2036-2037-2038-2039-2040-2041-2042-2043-2044-2045-2046-2047-2048-2049-2050-2051-2052-2053-2054-2055-2056-2057-2058-2059-2060-2061-2062-2063-2064-2065-2066-2067-2068-2069-2070-2071-2072-2073-2074-2075-2076-2077-2078-2079-2080-2081-2082-2083-2084-2085-2086-2087-2088-2089-2090-2091-2092-2093-2094-2095-2096-2097-2098-2099-2100-2101-2102-2103-2104-2105-2106-2107-2108-2109-2110-2111-2112-2113-2114-2115-2116-2117-2118-2119-2120-2121-2122-2123-2124-2125-2126-2127-2128-2129-2130-2131-2132-2133-2134-2135-2136-2137-2138-2139-2140-2141-2142-2143-2144-2145-2146-2147-2148-2149-2150-2151-2152-2153-2154-2155-2156-2157-2158-2159-2160-2161-2162-2163-2164-2165-2166-2167-2168-2169-2170-2171-2172-2173-2174-2175-2176-2177-2178-2179-2180-2181-2182-2183-2184-2185-2186-2187-2188-2189-2190-2191-2192-2193-2194-2195-2196-2197-2198-2199-2200-2201-2202-2203-2204-2205-2206-2207-2208-2209-2210-2211-2212-2213-2214-2215-2216-2217-2218-2219-2220-2221-2222-2223-2224-2225-2226-2227-2228-2229-2230-2231-2232-2233-2234-2235-2236-2237-2238-2239-2240-2241-2242-2243-2244-2245-2246-2247-2248-2249-2250-2251-2252-2253-2254-2255-2256-2257-2258-2259-2260-2261-2262-2263-2264-2265-2266-2267-2268-2269-2270-2271-2272-2273-2274-2275-2276-2277-2278-2279-2280-2281-2282-2283-2284-2285-2286-2287-2288-2289-2290-2291-2292-2293-2294-2295-2296-2297-2298-2299-2300-2301-2302-2303-2304-2305-2306-2307-2308-2309-2310-2311-2312-2313-2314-2315-2316-2317-2318-2319-2320-2321-2322-2323-2324-2325-2326-2327-2328-2329-2330-2331-2332-2333-2334-2335-2336-2337-2338-2339-2340-2341-2342-2343-2344-2345-2346-2347-2348-2349-2350-2351-2352-2353-2354-2355-2356-2357-2358-2359-2360-2361-2362-2363-2364-2365-2366-2367-2368-2369-2370-2371-2372-2373-2374-2375-2376-2377-2378-2379-2380-2381-2382-2383-2384-2385-2386-2387-2388-2389-2390-2391-2392-2393-2394-2395-2396-2397-2398-2399-2400-2401-2402-2403-2404-2405-2406-2407-2408-2409-2410-2411-2412-2413-2414-2415-2416-2417-2418-2419-2420-2421-2422-2423-2424-2425-2426-2427-2428-2429-2430-2431-2432-2433-2434-2435-2436-2437-2438-2439-2440-2441-2442-2443-2444-2445-2446-2447-2448-2449-2450-2451-2452-2453-2454-2455-2456-2457-2458-2459-2460-2461-2462-2463-2464-2465-2466-2467-2468-2469-2470-2471-2472-2473-2474-2475-2476-2477-2478-2479-2480-2481-2482-2483-2484-2485-2486-2487-2488-2489-2490-2491	

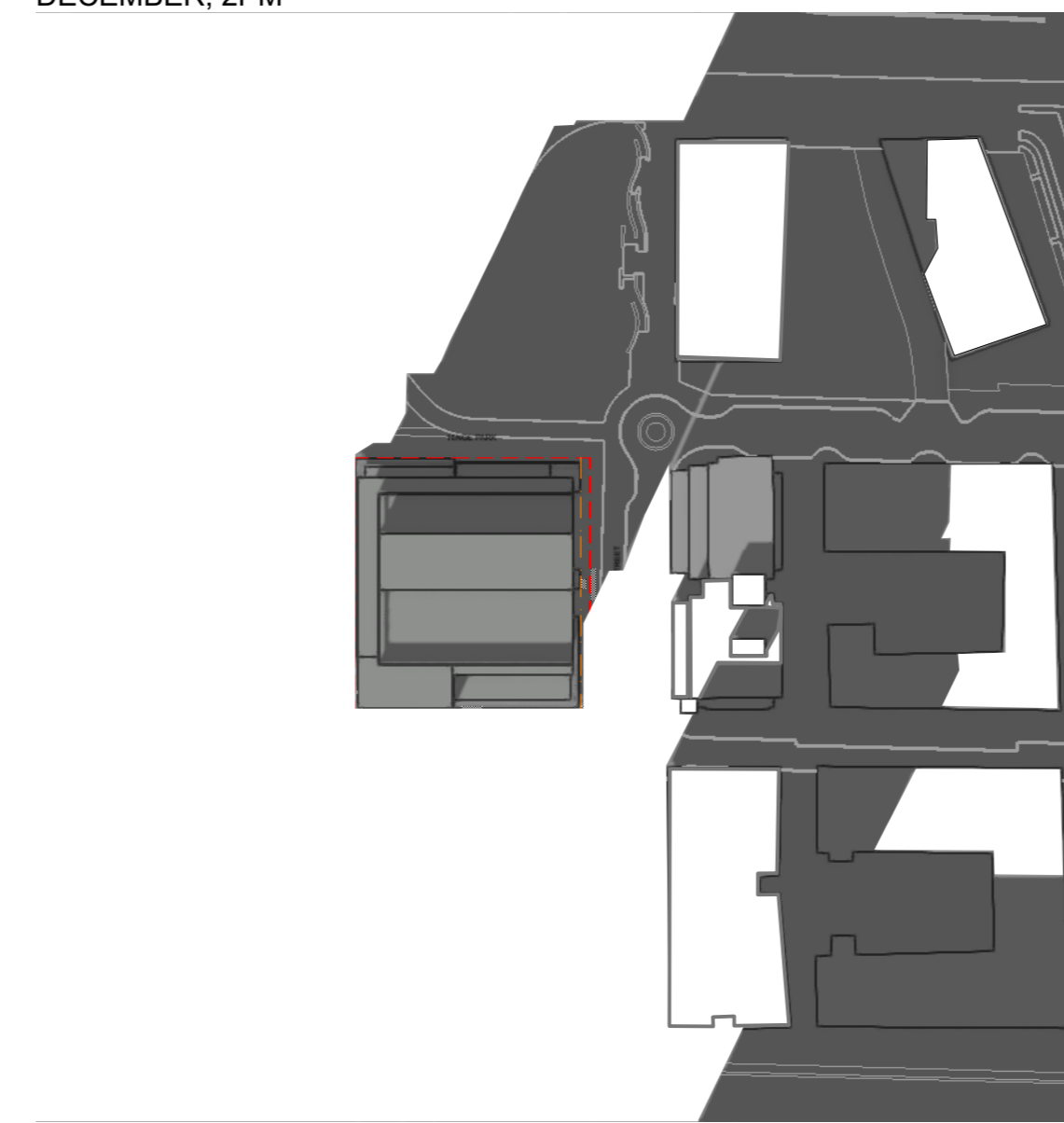
DECEMBER, 10AM



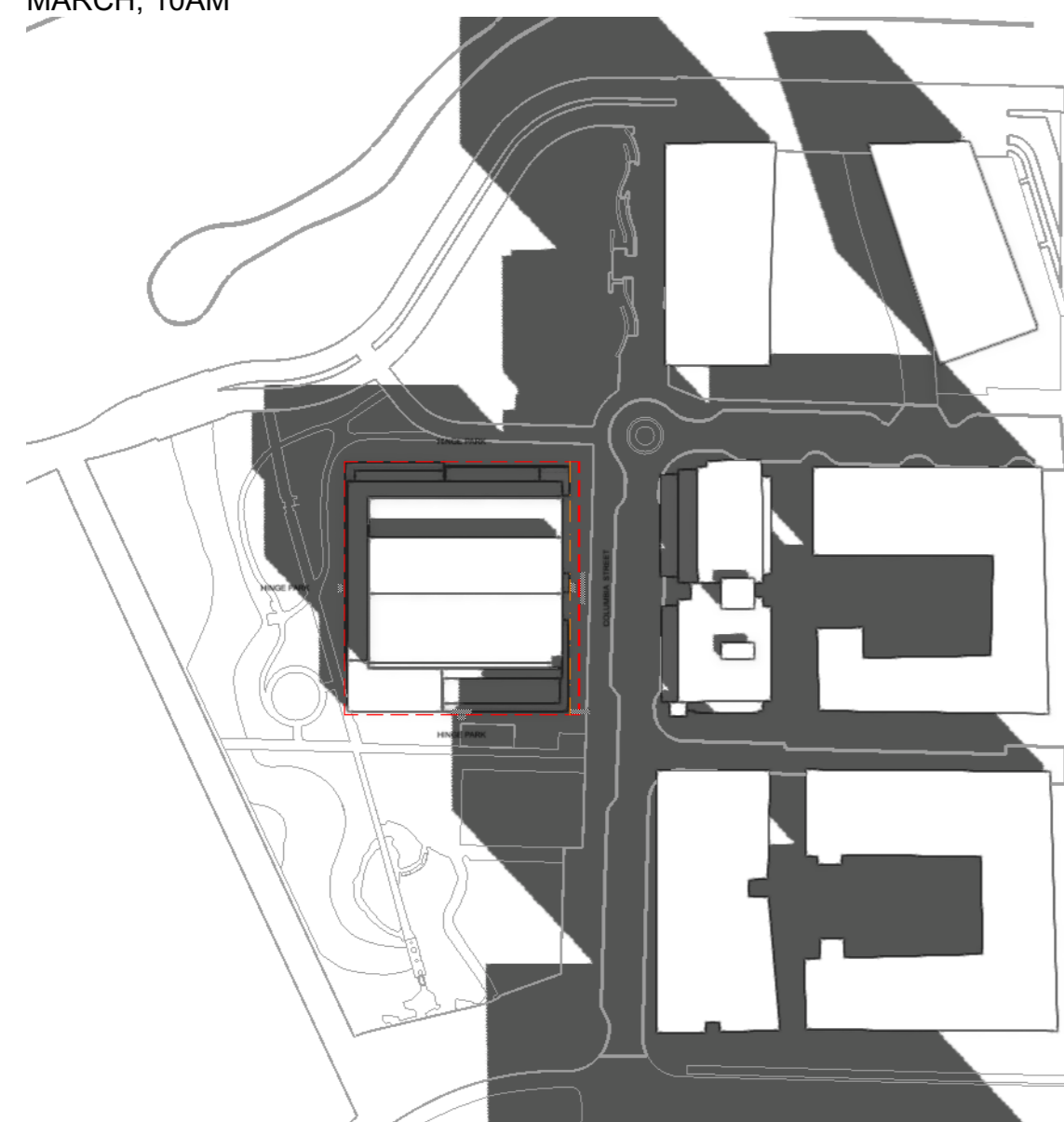
DECEMBER, 12PM



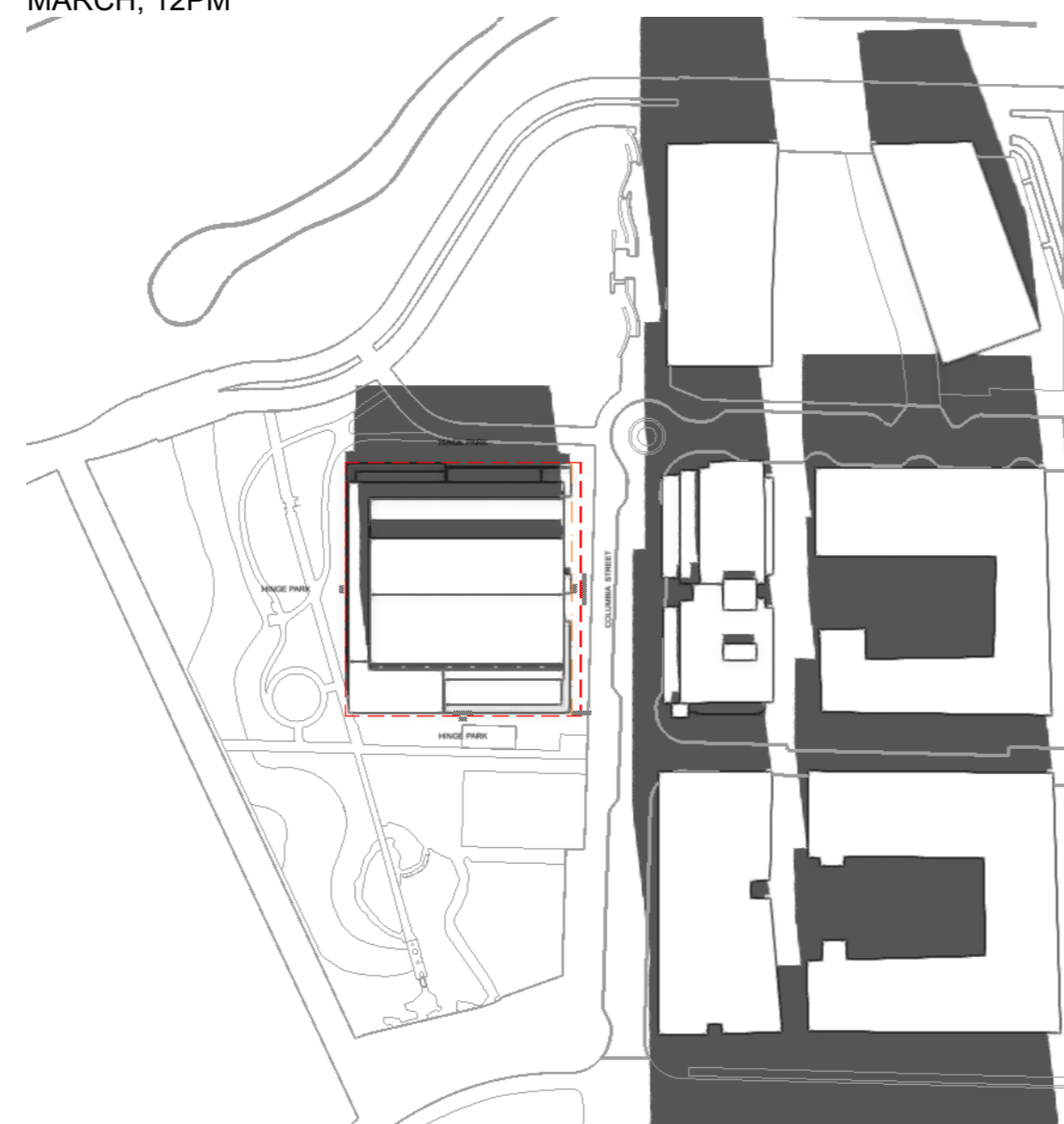
DECEMBER, 2PM



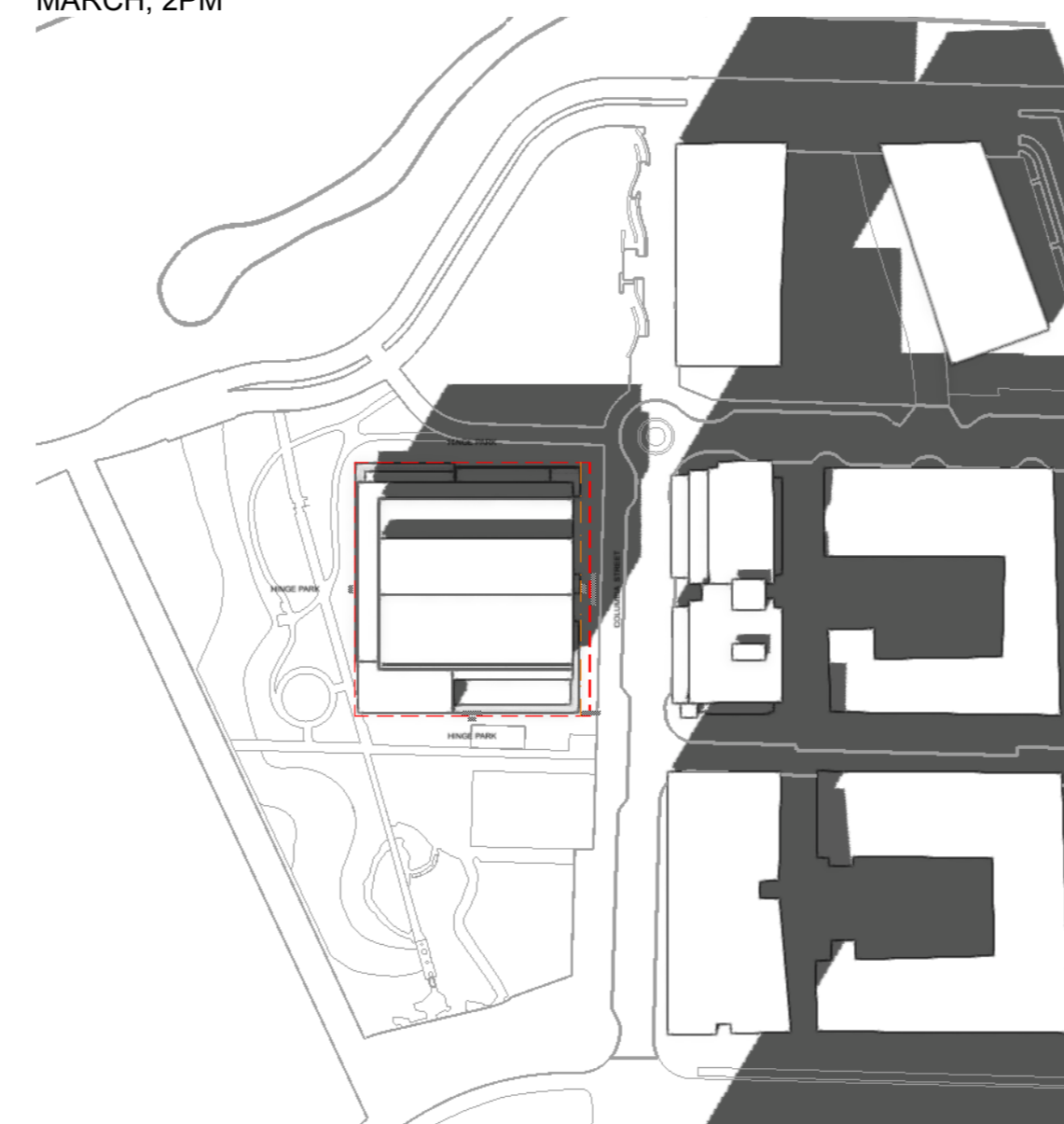
MARCH, 10AM



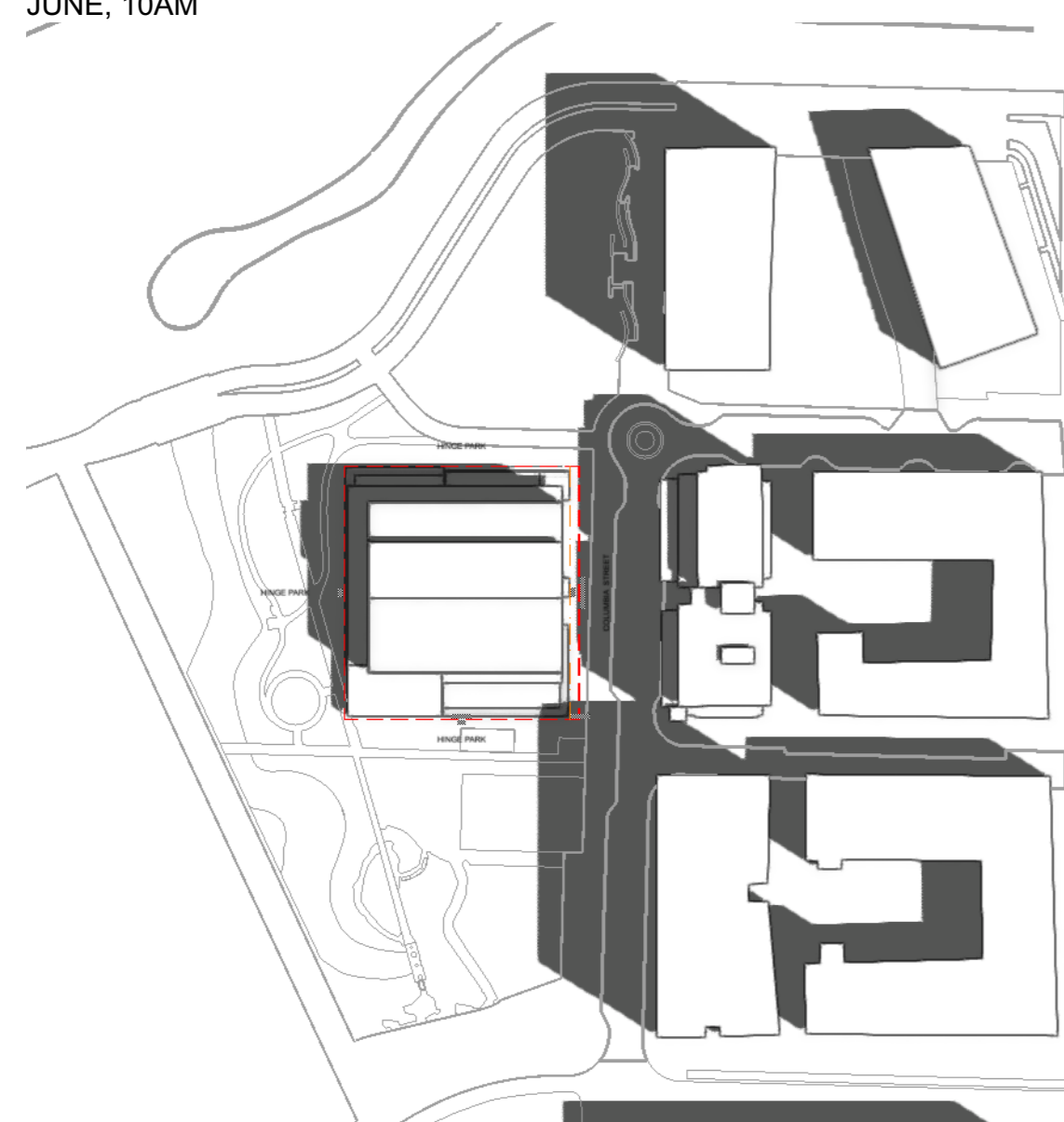
MARCH, 12PM



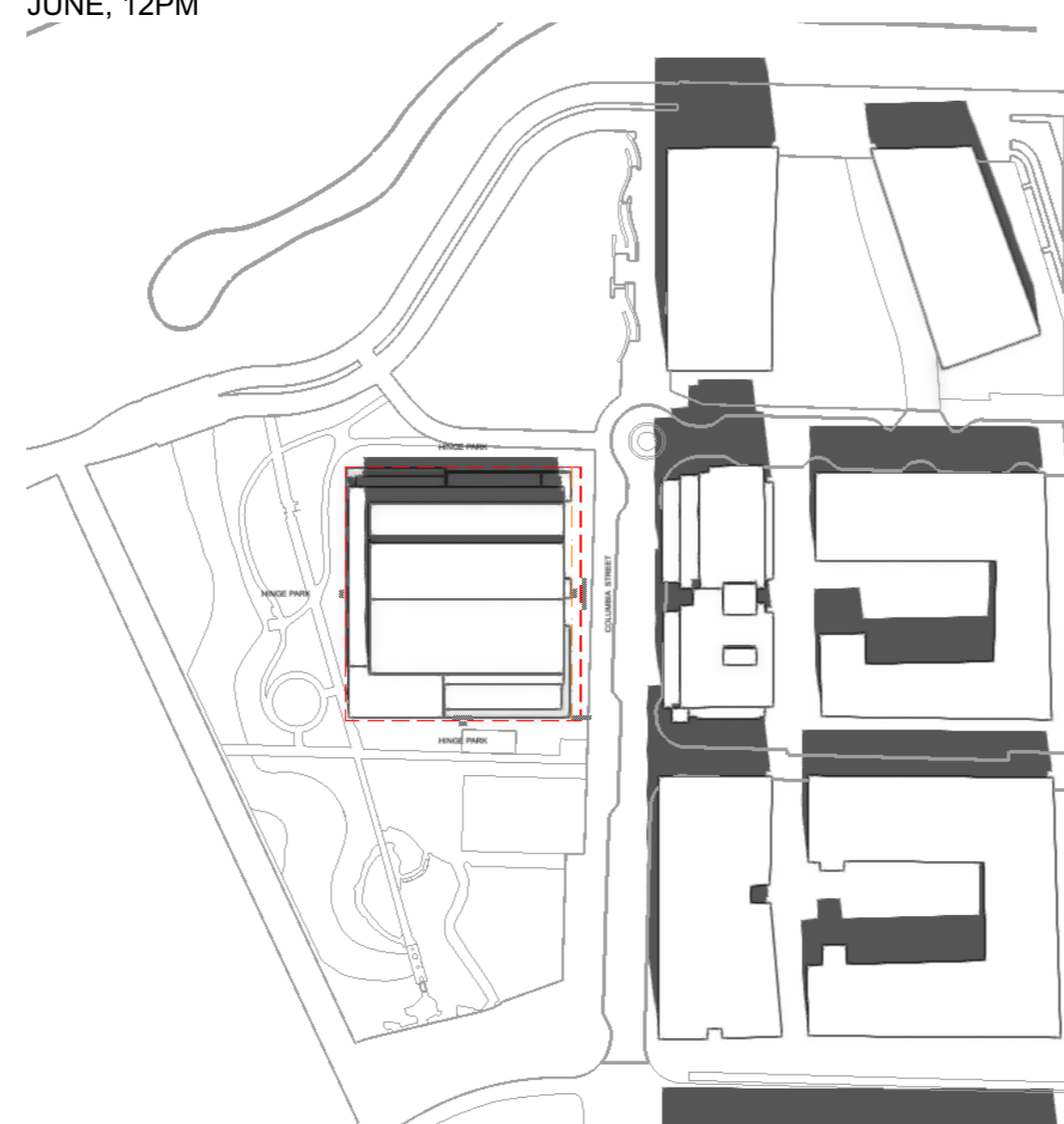
MARCH, 2PM



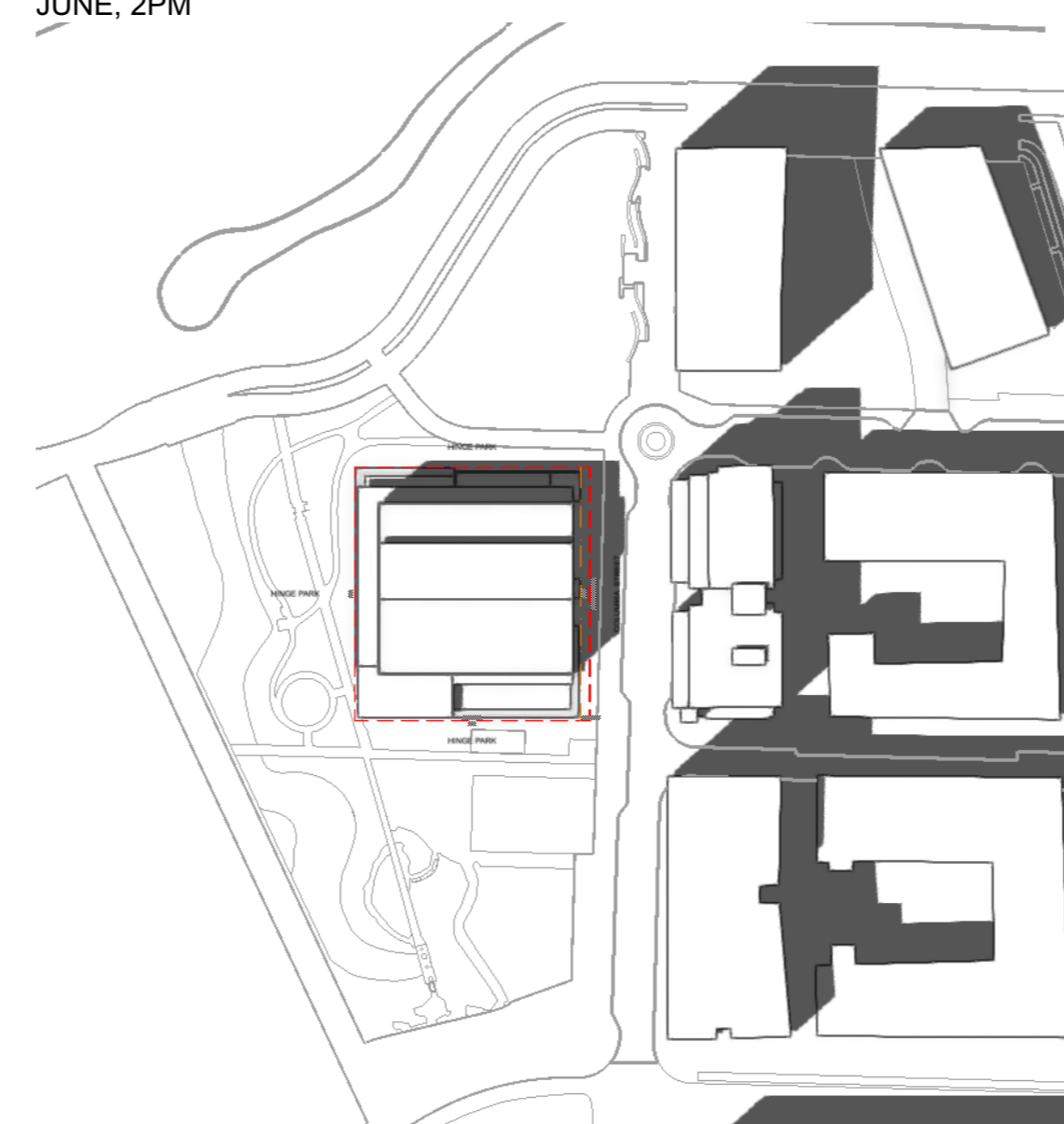
JUNE, 10AM



JUNE, 12PM



JUNE, 2PM



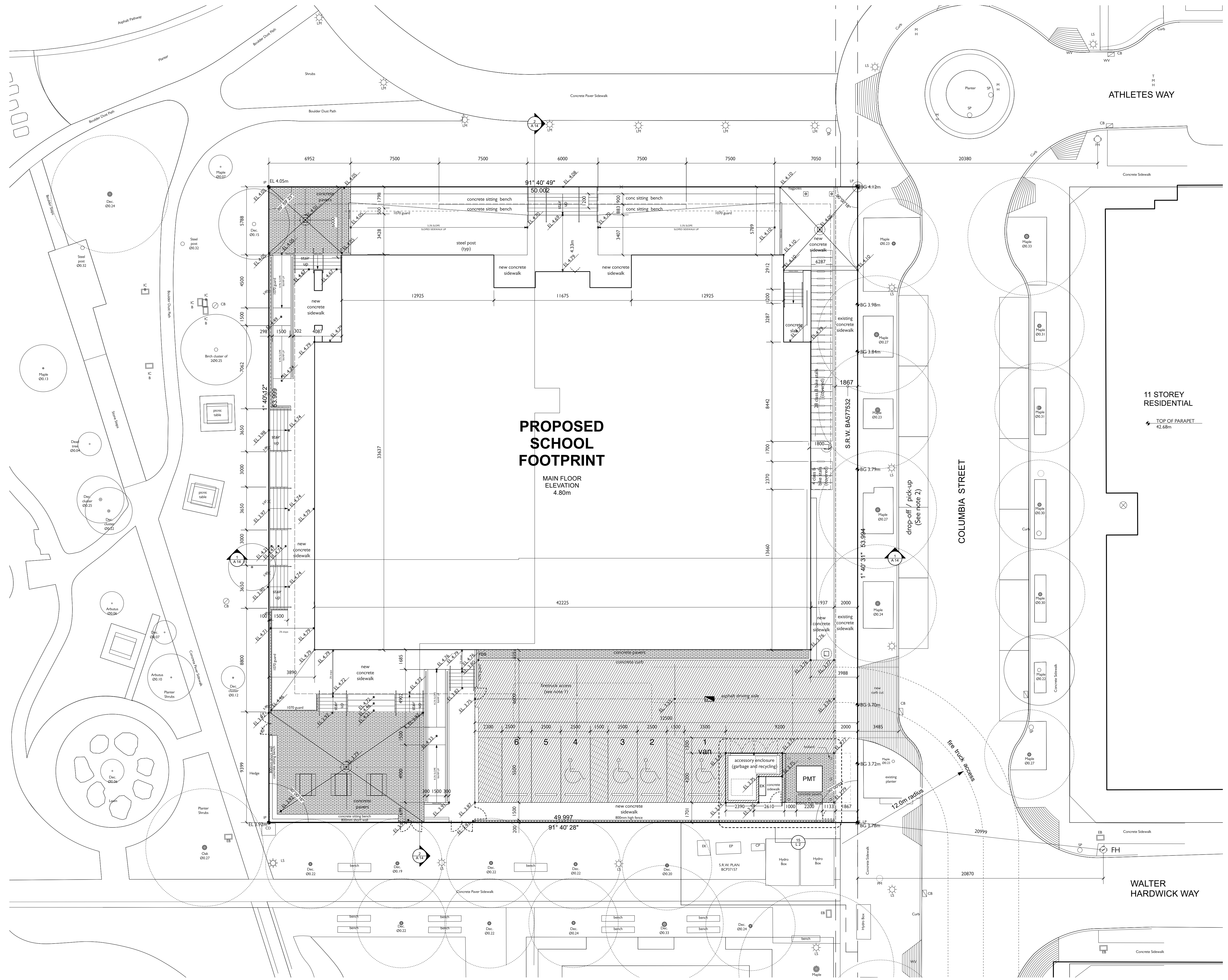
The drawings, as an instrument of service, is the property of McFarland Marceau Architects Ltd. and may not be reproduced without their permission and unless the reproduction carries their name. All designs and other information shown on this drawing are for use on the specified project only and shall not be used otherwise without written permission of this office.

**VS**

**New Elementary School at Olympic Village**  
215 W. 1st Ave., Vancouver, BC

- 25-03-18 ISSUED FOR OPA	
REV	Y M D ISSUE
CHECKED BY	PROJECT ID
CB/CD	2408
DRAWN BY	CAD FILE NAME
CB/CD	215W1ST02.dwg (vmp)
SHEET TITLE	
Shadow Studies	
DRAWING NO.	
A 15	
REVISION	

# SHADOW STUDIES

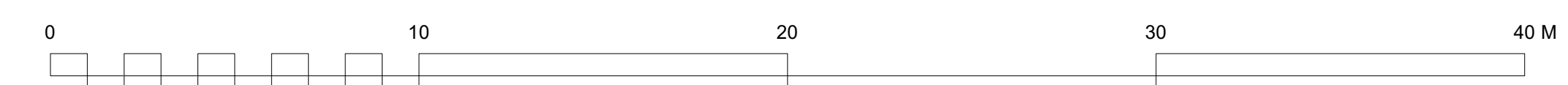


**SITE PLAN LEGEND:**

- existing city street tree
- tree to be removed (see L1)
- proposed bike stall 600x1800 (class B covered)
- Building Grade elevation (COV)
- proposed spot elevation
- MF main floor elevation
- fire access distance
- FH fire hydrant
- FDC fire department connection
- CB catch basin
- EB electrical box
- LS lamp standard
- PMT pad-mounted transformer
- EK electrical kiosk
- flag pole
- bollard
- concrete pavers
- concrete slab or sidewalk
- asphalt driving aisle and parking
- SROW line
- fence line at grade
- guard at plinth walls
- electrical line
- communications line
- water line
- gas line
- storm line

- NOTES:**
- Fire access route shown on this drawing aligns with the current TAMS report. Additional work with COV, code consultant, VPO and FD is required to finalize design for this item during DP review process.
  - On-site surface parking to provide 4 universally accessible parking stalls and 2 VSB service vehicle parking stalls. The City has indicated that Class B service truck loading can occur on Columbia Street.
  - On-site ancillary building to house dumpsters. The City has indicated the garbage and recycling collection can occur on Columbia Street. Dumpsters may be retrieved from site by means of jitney pick-up truck or similar.
  - Off-site street improvements are being considered by COV. This site plan will be updated when the city process is complete.
  - Detailed design of site transitions to adjacent property will occur in conjunction with review and input from COV, VPO and MMA during the DP review process.
  - For detailed transitions from project site to adjacent surface. See L1, L2, L3.

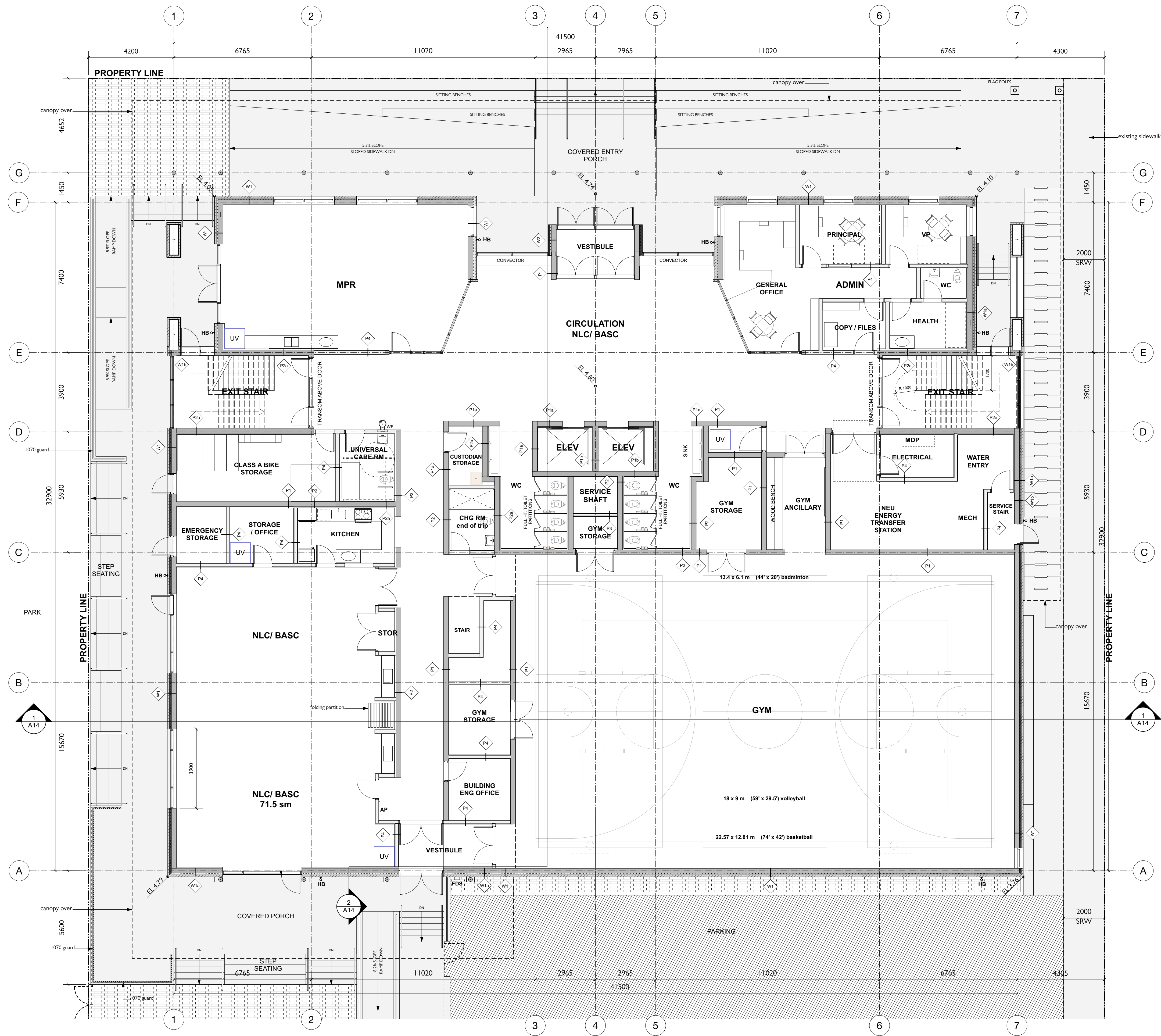
Site Plan  
 Scale: 1:150



# SITE PLAN

SHEET TITLE	
Site Plan	
DRAWING NO.	A 4
REVISION	

REV	Y	M	D	ISSUE
1				ISSUED FOR OPA
2				PROJECT ID
3				2408
4				CAD FILE NAME
5				260309 ISSUED CIVIL DD



**PLAN LEGEND:**

AP	annunciator panel
FDS	fire department service
HB	hose bib
◇	wall tag
MDP	main distribution panel
UV	unit ventilator
WF	water fountain
NEU	neighbourhood energy unit
CU	condenser unit

**L1 Ground Floor Plan**  
 Scale: 1:100

# L1 GROUND FLOOR PLAN

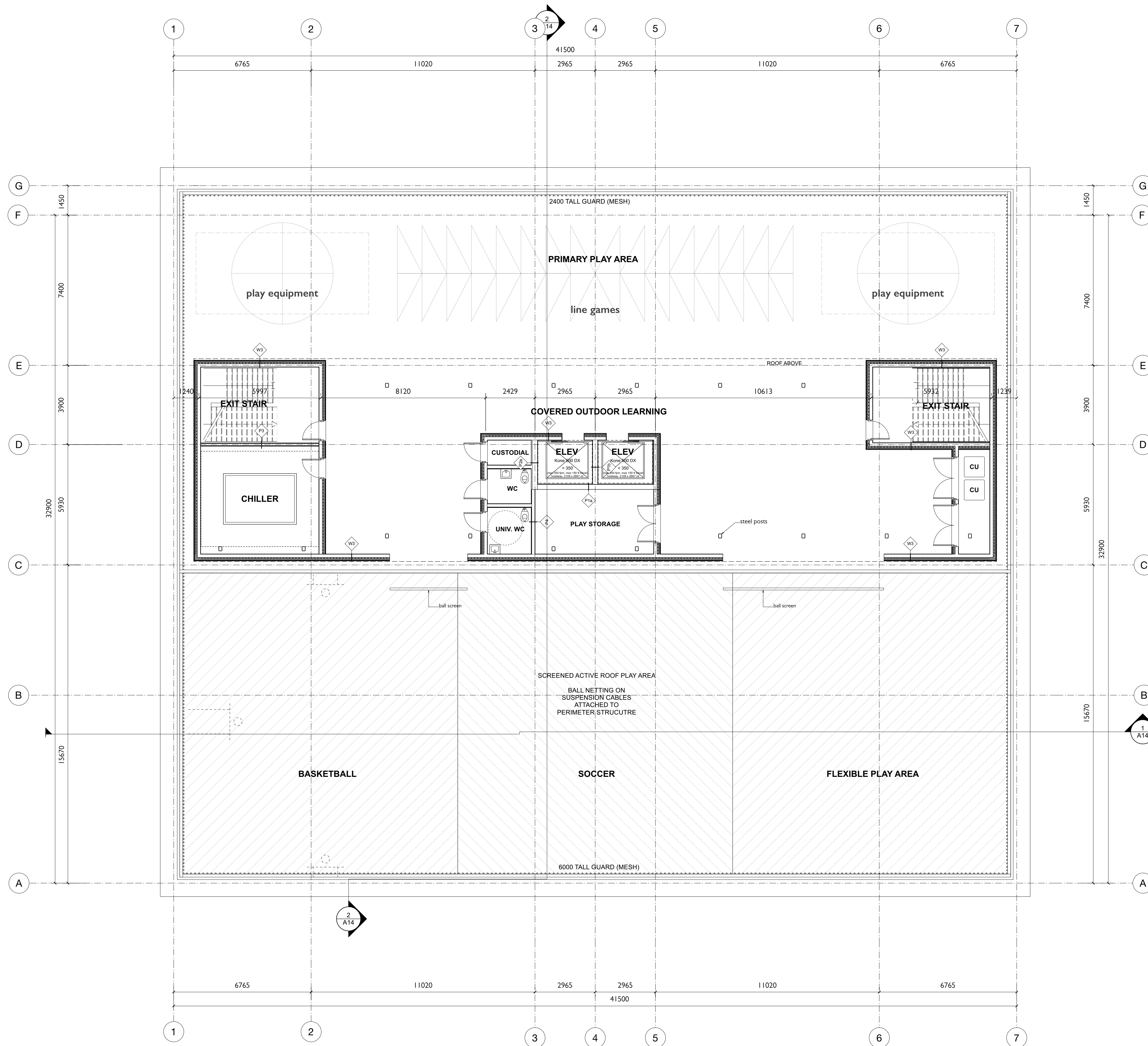
New Elementary School at Olympic Village  
 215 W. 1st Ave, Vancouver, BC

26-03-18	ISSUED FOR OPA
REV	Y M D ISSUE
CB/CD	PROJECT ID 2408
DRWN BY CB/CD	CAD FILE NAME SHEET L1 W100-01.dwg

SHEET TITLE  
**L1 Ground Floor Plan**

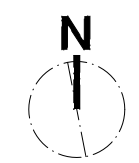
DRAWING NO.  
**A 5**

REVISION



**PLAN LEGEND:**

AP	annunciator panel
FDS	fire department service
HB	hose bib
◇	wall tag
MDP	main distribution panel
UV	unit ventilator
WF	water fountain
NEU	neighbourhood energy unit
CU	condenser unit



**L5 Occupied Roof Plan**  
 Scale: 1:100



# L5 FLOOR / ROOF PLAN

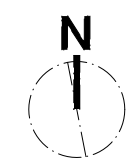
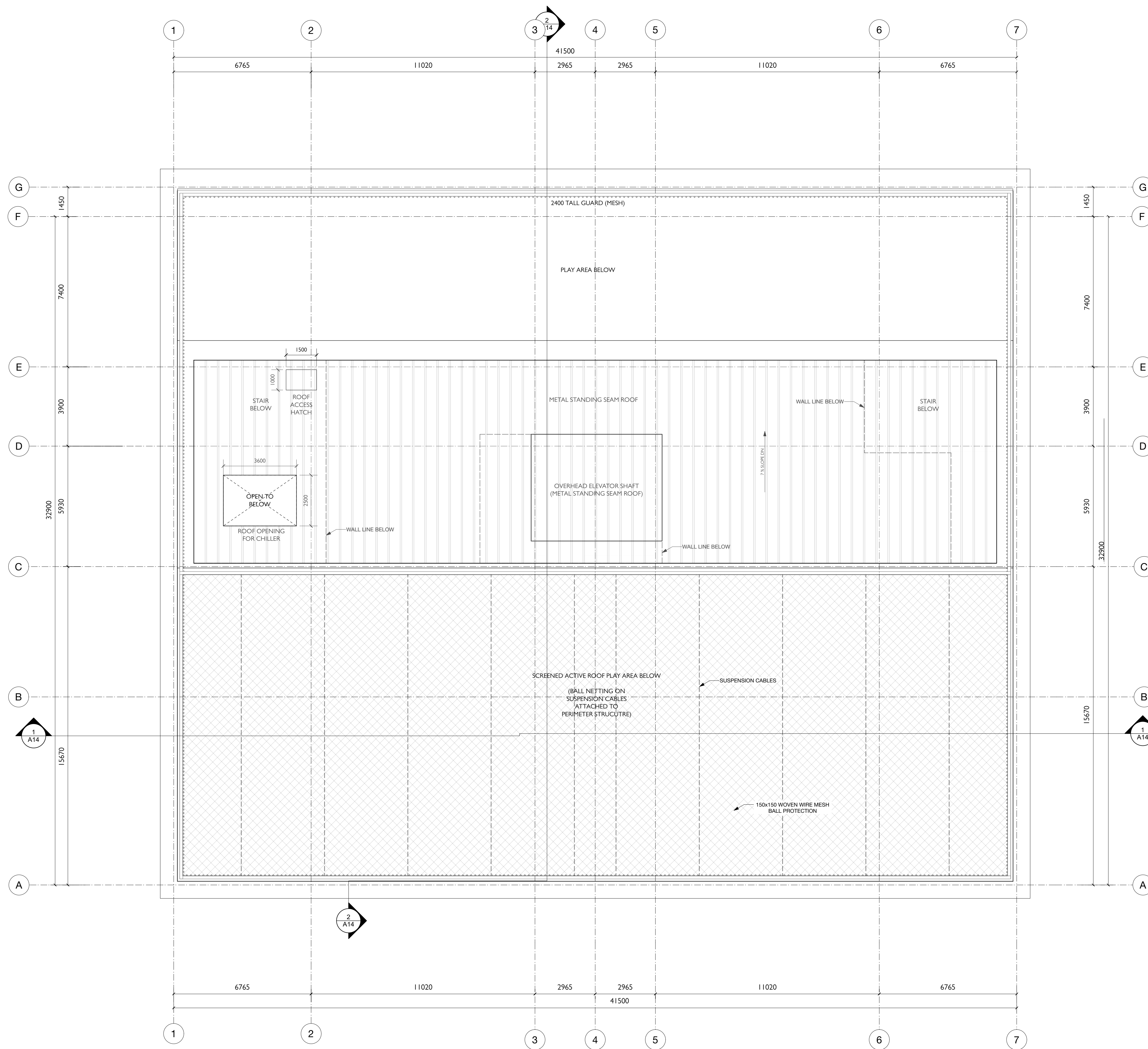
**New Elementary School at Olympic Village**  
 215 W. 1st Ave, Vancouver, BC

REV	Y	M	D	ISSUE
26-03-18				ISSUED FOR OPA
CHECKED BY	PROJECT ID			
CB/CD	2408			
DRAWN BY	CAD FILE NAME			
CB/CD	2408-L5-RD-02.dwg			

SHEET TITLE  
**L5 Floor / Roof Plan**

DRAWING NO.  
**A 9**

REVISION



**L6 Penthouse Roof Plan**  
 Scale: 1:100



# L6 PH ROOF PLAN

**New Elementary School at Olympic Village**  
 215 W. 1st Ave, Vancouver, BC

REV	Y	M	D	ISSUE
				ISSUED FOR OPA
CB/CD				PROJECT ID: 2408
CB/CD				CAD FILE NAME: SHEET L6 PH OPA.dwg

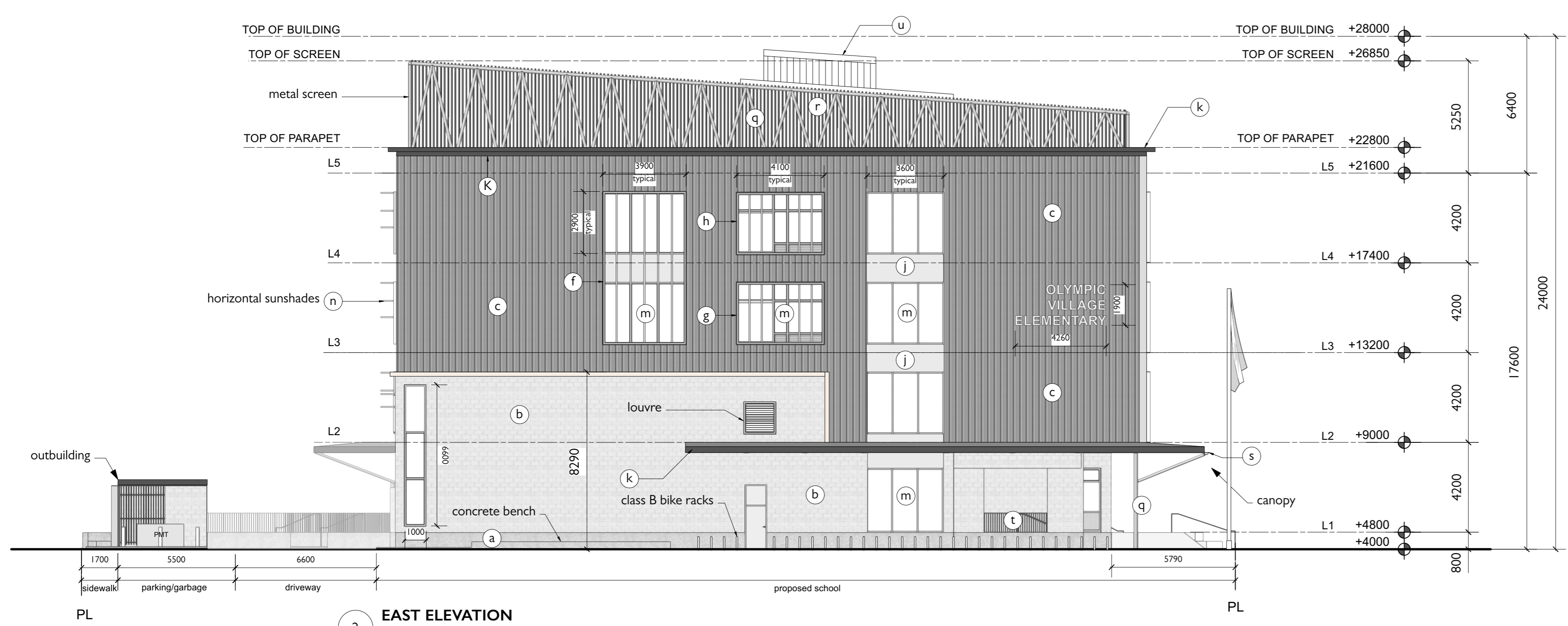
SHEET TITLE  
**L6 PH Roof Plan**

DRAWING NO.  
**A 10**

REVISION



**1 North Elevation**  
 Scale: 1:150



**2 EAST ELEVATION**  
 Scale: 1:150

**MATERIAL KEY**

- a. exposed concrete (architectural)
- b. ground-faced concrete masonry cladding
- c. metal cladding field 1
- d. metal cladding field 2
- e. metal trim 1
- f. metal trim 2
- g. metal trim 3
- h. metal trim 4
- j. metal flashing 1
- k. metal flashing 2
- m. anodized aluminum windows
- n. anodized aluminum sunshades
- q. painted grey steel structure
- r. painted grey steel rooftop pickets
- s. painted grey steel gutters
- t. painted grey pickets / handrails
- u. standing seam metal roofing

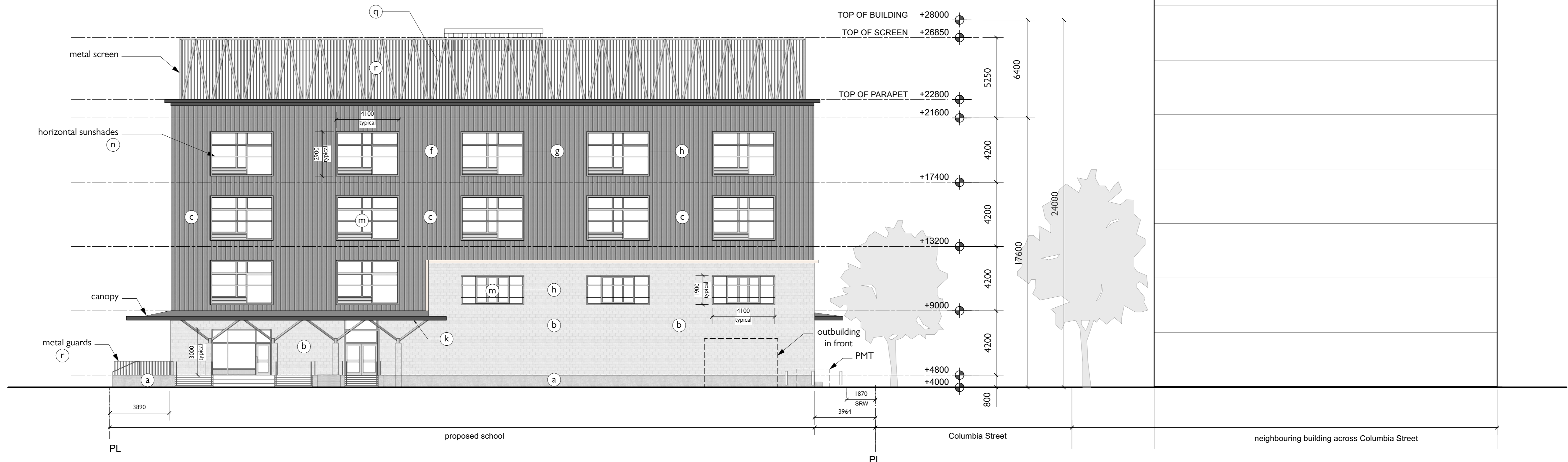
**New Elementary School at Olympic Village**  
 215 W. 1st Ave, Vancouver, BC

REV	Y	M	D	ISSUE
CHECKED BY	PROJECT ID			
CB/CD	2408			
DRAWN BY	CAD FILE NAME			
CB/CD	2408_01_VSL_CD_Dwgings.rvt			

SHEET TITLE  
**Elevations N & E**

DRAWING NO.  
**A 12**

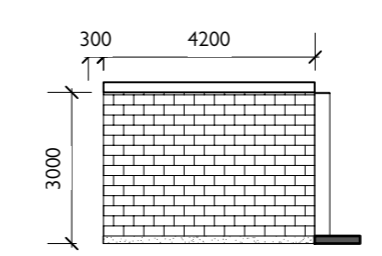
**ELEVATIONS N & E**



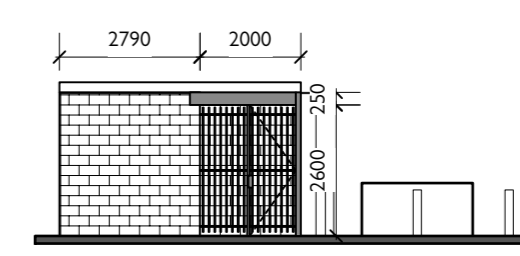
**1 SOUTH ELEVATION**  
 Scale: 1:150



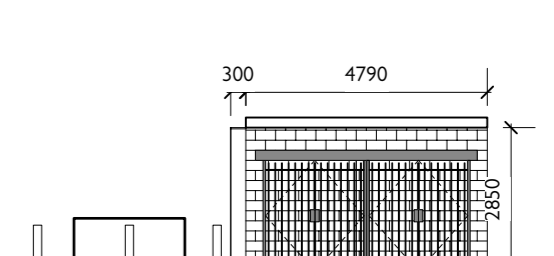
**2 WEST ELEVATION**  
 Scale: 1:150



**3 WEST ELEVATION**  
 Scale: 1:150



**4 SOUTH ELEVATION**  
 Scale: 1:150



**5 NORTH ELEVATION**  
 Scale: 1:150

**MATERIAL KEY**

- a. exposed concrete (architectural)
- b. ground-faced concrete masonry cladding
- c. metal cladding field 1
- d. metal cladding field 2
- e. metal trim 1
- f. metal trim 2
- g. metal trim 3
- h. metal trim 4
- j. metal flashing 1
- k. metal flashing 2
- m. anodized aluminum windows
- n. anodized aluminum sunshades
- p. cross-laminated timber soffit
- q. painted grey steel structure
- r. painted grey steel rooftop pickets
- s. painted grey steel gutters
- t. painted grey pickets / handrails
- u. standing seam metal roofing

**ELEVATIONS S & W**

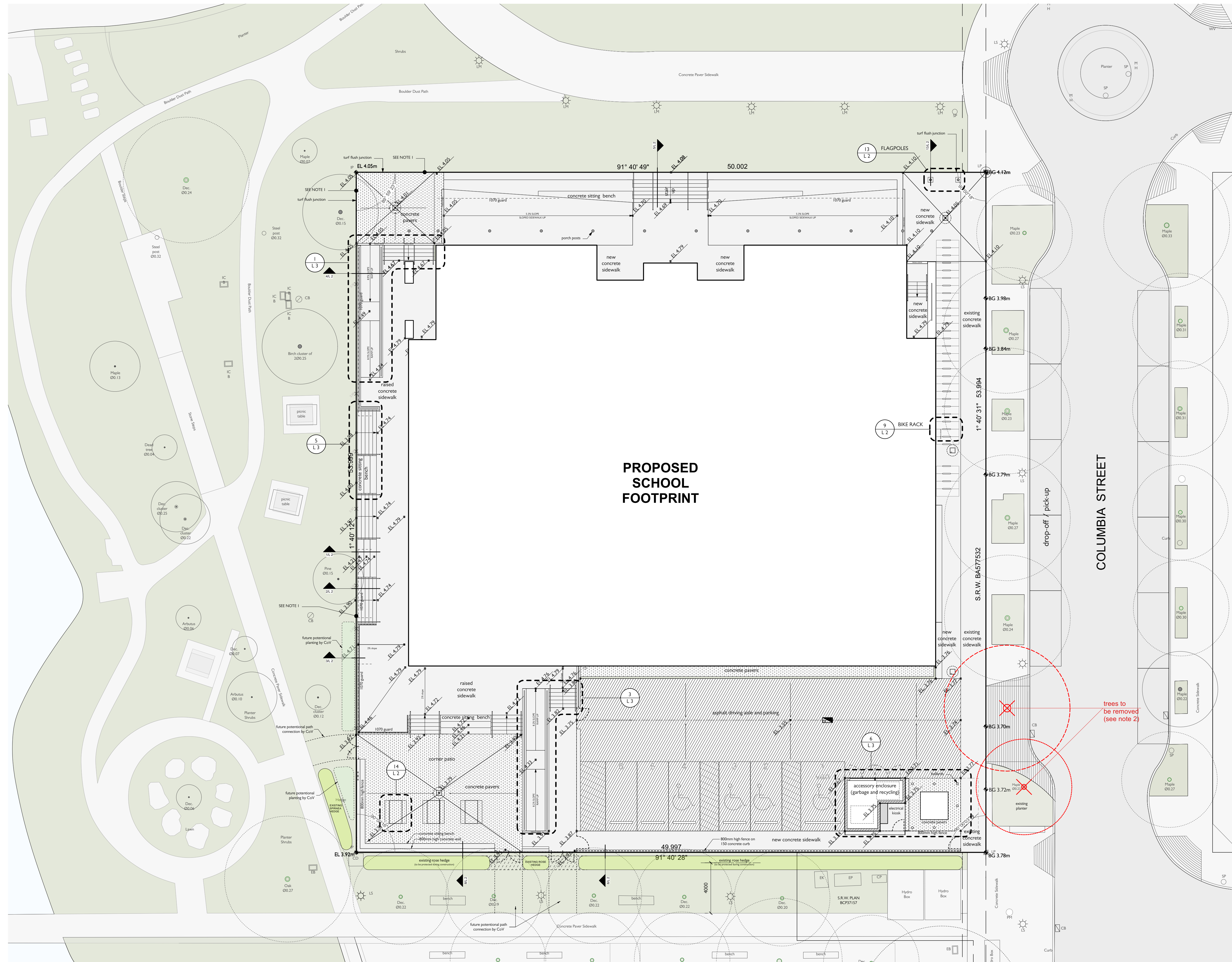
25-03-18 ISSUED FOR OPA

REV	Y	M	D	ISSUE
1				PROJECT ID
				2408
				CAD FILE NAME
				2408-01-01-01-01-01.dwg

SHEET TITLE  
**Elevations S & W**

DRAWING NO.  
**A 13**

REVISION



**PROPOSED  
SCHOOL  
FOOTPRINT**

**LANDSCAPE LEGEND:**

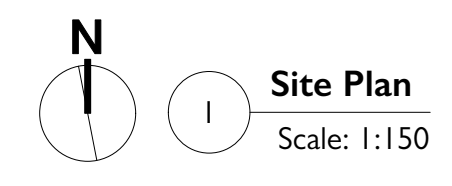
- existing city street tree
- street tree to be removed
- proposed bike stall 600x1800 (class B covered)
- Building Grade elevation (COV)
- proposed spot elevation
- MF main floor elevation
- sand-set concrete pavers
- concrete slab or sidewalk
- asphalt driving aisle and parking

**NOTES:**

1. steps, terrace, seats and raised sidewalk porches on three sides of school; create community-friendly amenities interfacing with adjoining parks while providing safe and accessible transition zones for students.
2. four replacement trees to be provided by the VSB and located offsite, at locations determined by the city Parks Board.
3. see L2, L3 for landscape details and products.

COLUMBIA STREET

trees to be removed (see note 2)



**LANDSCAPE / HARDSCAPE PLAN**

**New Elementary School at Olympic Village**  
215 W. 1st Ave, Vancouver, BC

REV	Y	M	D	ISSUE
CHCKED BY	CB/CD	PROJECT ID	2408	
DRAWN BY	CB/CD	CAD FILE NAME	SRR-OLV-00-Dwg-01-15.rvt	

SHEET TITLE  
Landscape / Hardscape Plan

DRAWING NO.  
**L 1**

REVISION