


---

The background of the entire image is a low-angle shot of graduates at a ceremony. Their silhouettes are dark against a pale, clear sky. Many students are holding their black graduation caps high in the air, and several are holding rolled-up white diplomas. The overall mood is one of triumph and celebration.

# **GRADE 12 FAMILY INFO NIGHT: GRADUATION, POST-SECONDARY & SCHOLARSHIPS**

**OCTOBER 1, 2025**

---

# WELCOME!

## SHAPE OF THE EVENING:

- ❖ Grade 12 & Graduation
- ❖ Post Secondary Information & Applications
- ❖ Scholarships
- ❖ Questions





---

# INDIGENOUS ACKNOWLEDGEMENT

We gratefully acknowledge that we live, work, play, learn, and unlearn on the unceded and traditional territories of the Musqueam, Squamish, and Tsleil Waututh nations.







---

# PART I: GRADUATION & GRAD EVENTS



---

# ENGLISH, CLC, & GRAD REQUIREMENTS

- Grade 12s must all complete English 12 & Career Life Connections (CLC) 12
    - English is an especially **important course** for post-secondary applications.
    - Career Life Connections (CLC)
      - Usually taken at Kits when students are in Grade 11. If not, they need to take it in Grade 12.
      - Off-timetable and through **Teams**
      - Has assignments and a **capstone** component. Students create a slide show of their learning and present to a Kits staff member.
      - Think skateboarding tricks, learning to play guitar, researching future schools or jobs...
  - Information about all grad requirements is available here:  
<https://www2.gov.bc.ca/gov/content/education-training/k-12/administration/legislation-policy/public-schools/graduation-requirements>
-

# GRADUATION REQUIREMENTS

## Grade 10:

CLE 10, English 10, Social Studies 10,  
PE 10, Science 10

## Grade 11/12:

a Math 11 or 12, a Social Studies 11 or 12, a  
Science 11 or 12

## Grade 12:

an English 12

## Other Requirements:

- An Indigenous course
- At least 4 Grade 12 courses
- A Fine Arts/ADST 10, 11, or 12
- 80 credits (52 required, 28 electives)
- Assessments: Literacy 10 & 12,  
Numeracy 10, (Fl: Français Langue 12)

## Graduation Programming

REQUIRED COURSES			
GRADUATION PROGRAM			
	Subject Area	Course Title	Credits
<input type="checkbox"/>	Career Life Education 10		4
<input type="checkbox"/>	Career Life Connections & Capstone		4
<input type="checkbox"/>	a Language Arts 10		4
<input type="checkbox"/>	a Language Arts 11		4
<input type="checkbox"/>	a Language Arts 12		4
<input type="checkbox"/>	a Math 10		4
<input type="checkbox"/>	a Math 11 or 12		4
<input type="checkbox"/>	an Arts Education or Applied Design, Skills & Technology 10, 11, or 12		4
<input type="checkbox"/>	a Social Studies 10		4
<input type="checkbox"/>	a Social Studies 11 or 12		4
<input type="checkbox"/>	a Science 10		4
<input type="checkbox"/>	a Science 11 or 12		4
<input type="checkbox"/>	Physical and Health Education 10		4
<b>TOTAL REQUIRED CREDITS - One Indigenous Focus course is required for all 2024+ graduates.</b>			<b>52</b>
ELECTIVE CREDITS			
<input type="checkbox"/>	Grade 10, 11, or 12 Elective		4
<input type="checkbox"/>	Grade 10, 11, or 12 Elective		4
<input type="checkbox"/>	Grade 10, 11, or 12 Elective		4
<input type="checkbox"/>	Grade 10, 11, or 12 Elective		4
<input type="checkbox"/>	Grade 10, 11, or 12 Elective		4
<input type="checkbox"/>	Grade 12 Elective		4
<input type="checkbox"/>	Grade 12 Elective		4
<b>TOTAL ELECTIVE CREDITS</b>			<b>28</b>
<b>OVERALL CREDITS</b>			<b>80</b>
GRADUATION ASSESSMENTS			
<input type="checkbox"/>	Numeracy Assessment 10		
<input type="checkbox"/>	Literacy Assessment 10		
<input type="checkbox"/>	Literacy Assessment 12		
<input type="checkbox"/>	Évaluation de littératie de la 12 e année - Français langue seconde-immersion		

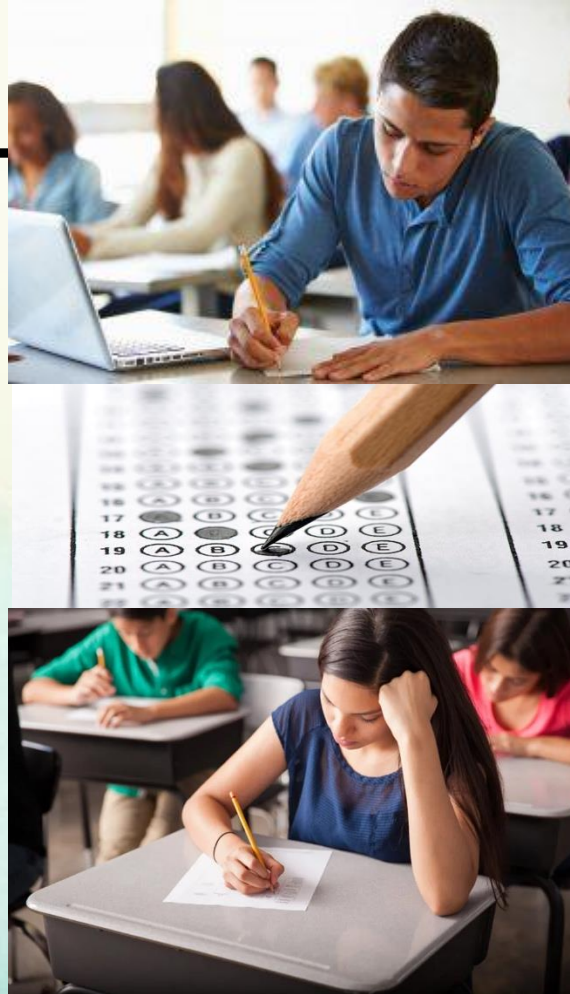


---

# LITERACY ASSESSMENT

All Grade 12 students write a **Literacy 12** Assessment

- The assessment will be written between **Jan. 12-23**.
- Note: UBC requires a **proficient (3)** on this assessment.



- **Numeracy 10: Week of Nov. 3**
- **Literacy 10: Week of April 20**

---

# FRAL ASSESSMENT

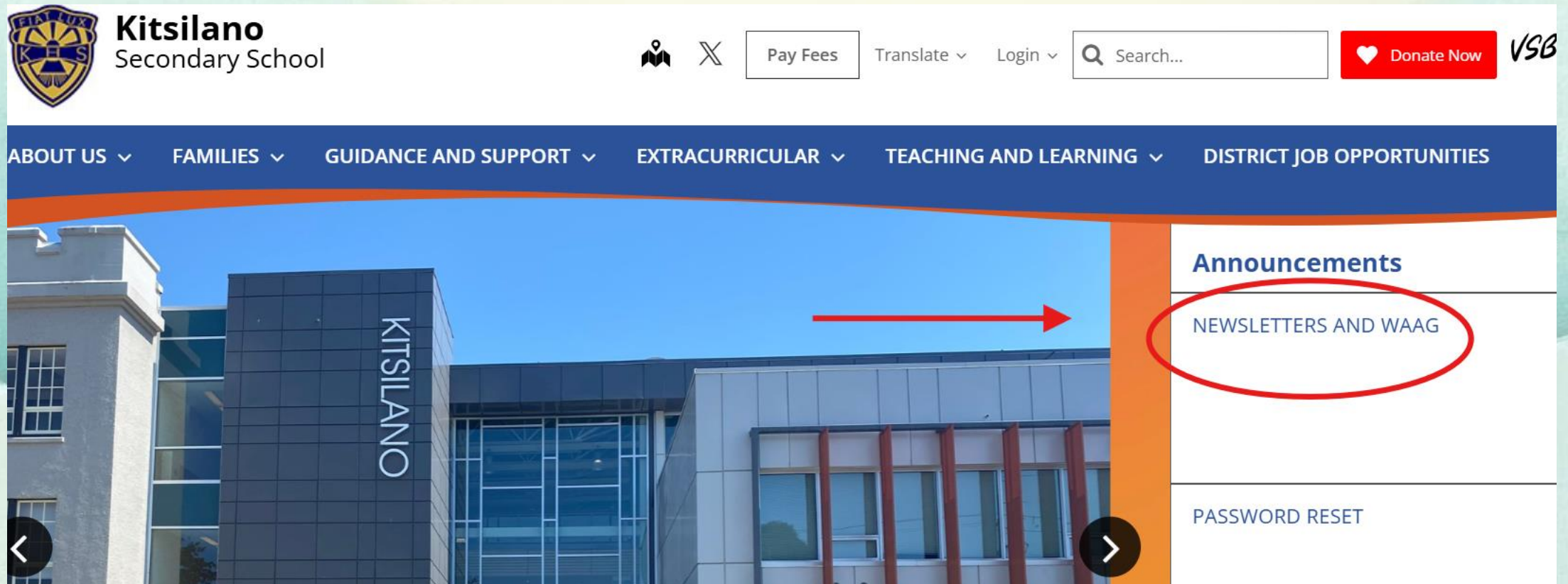
French Immersion Grade 12 students will complete a **Français Langue 12 (FRAL)** Assessment

- Semester 1 FRAL: Written between **Jan. 12-23**.
- Semester 2 FRAL: Written between **June 8-19**.
- **Written** Section
- **Oral** Section

---

**\*These assessment dates are set by the government. Dates are NOT flexible. If a student is ill, they can write in June.**

# THE KITSILANO WEBSITE: WAAG SECTION





---

# THE WAAG ON THE KITSILANO WEBSITE

- Students should check the WAAG and Scroll down to the Career Centre News.
- Scholarship deadlines & links
- PSI events & fairs
- Admission info links & deadlines

## CAREER CENTRE NEWS

Week of September 29 – October 3, 2025

### DEADLINES

October 16	<a href="#">Loran Scholar Award</a> Application Deadline
October 22	<a href="#">TD Scholarships for Community Leadership</a> Application Deadline
October 24	<a href="#">U of T Wolf Scholars Program</a> School Application Deadline
October 26	<a href="#">Ken Michel Memorial Scholarship for Carpentry</a> Application Deadline
November 20	<a href="#">Queens University Chancellors Scholarship</a> School Application Deadline
December 8	<a href="#">Queens University Major Admission Awards</a> Application Deadline
December 1	<a href="#">Horatia Alger Association of Canada Scholarships</a> Application Opens
December 17	<a href="#">Schulich Leader Scholarship</a> School Nomination Application Deadline
January 28	<a href="#">Schulich Leader Scholarship</a> Application Deadline (school nomination required)

### EVENTS

Ongoing	<a href="#">Post Secondary BC Events</a> , various
Ongoing	<a href="#">Creative Pathways</a> , various opportunities - <b>paid work, programs, skills + training, information + knowledge, networking + events</b> within the motion picture industry, Animation, Visual Effects and Post, and Film Adjacent sectors
Sept. - January	<a href="#">Langara Program Information Sessions</a>
September 29	<a href="#">Canadian Universities Event</a> at Delta Hotel Burnaby, 6:00 – 8:00 PM
October 1	<a href="#">Applying to UBC Engineering</a> , 5:00 – 6:00 PM Online
October 2	<a href="#">Canadian Universities Event</a> at Westfield Country Club Surrey, 6:00 – 8:00 PM
October 3	<a href="#">UK University Fair</a> at SFU Harbour Centre Campus, 3:00 – 7:00 PM
October 8	<a href="#">UBC Fall 2025 Undergraduate Science Slam</a> , 5:00-7:30 PM
October 9	U. of Victoria Presentation at Kitsilano Theatre, Lunch
October 9	<a href="#">VAIS U.S. College &amp; University Fair</a> at West Point Grey Academy, 5:00 – 7:00 PM
October 10	SFU Applied Science at Kitsilano Theatre, FIT – sign up required
October 21	SFU Beedie School of Business at Kitsilano Multipurpose Room, FIT – sign up required
November 14	Kitsilano Post Secondary BC Fair, 9:00 – 11:00 AM
November 14	<a href="#">UBC Engineering Virtual Program Fair</a> , 6:00 – 8:00 PM

---

# THE GRADE 12 TEAMS CHANNEL



- We have a **Grade 12** Channel on **Teams** to share important information.
- Important information for Grade 12 students, opportunities and events for post-secondary, local and major scholarships, Grad Council
- Students should check Teams regularly and turn on their notifications.



▼ Main Channels

- General
- Counsellor - S. Leslie
- Grad Council
- Post Secondary
- Scholarships





---

# GRAD ACTIVITIES

## MARK YOUR CALENDARS

- The Commencement Ceremony is on **Monday, June 8** at Queen Elizabeth Theatre. It will start at 7 pm. Students will need to be there earlier. Leading up to the event, there will be assemblies & a grad rehearsal. More information will be sent to families in the fall.
- TBD: Grad Reception will follow the Commencement Ceremony
- Ms. Falconer and Ms. O'Donnell are working with the Grad Committee to plan other Grade 12 events.





---

# PART II: POST-SECONDARY APPLICATIONS & TRANSCRIPTS





---

# WHAT STUDENTS NEED TO APPLY TO PSI'S

- 1. Personal Education Number (**PEN** – found on report card )
- 2. An account with **Education Planner BC**
- 3. An account with **Student Transcripts Service (STS)**
- 4. An account with **BCeID**
- 5. If applying to a PSI in Ontario, an account with **OUAC**
- 6. If applying to the US, an account with **Common App**
  
- Know the deadlines – Late applications aren't accepted!
- Know any program requirements.



---

# EDUCATION PLANNER BC

- Applying to Post-Secondary institutions in British Columbia almost exclusively starts with this public government website.
- Students can also search through a variety of school programs and compare post-secondary schools easily.
- Make an account ASAP to apply to schools in BC. \*Use a non VSB email.

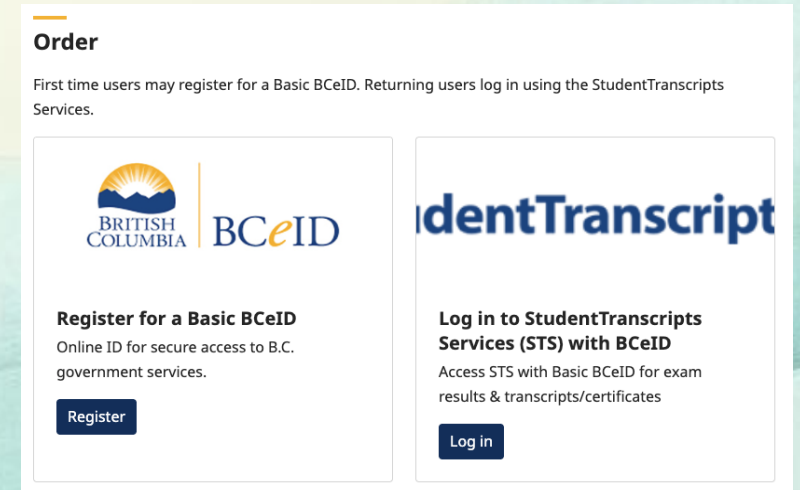




---

# STUDENT TRANSCRIPTS SERVICE: HOW MARKS ARE SENT TO PSI'S

- Any student applying for a post-secondary school should make an account on the BC government's **Student Transcripts BC** site.
  - Students need their **Personal Education Number (PEN)**, (on any report card or ask Ms. Leslie or Ms. Pham)
  - Link to site [here](#).
- This site is the hub where students share their transcripts and course progress to post-secondaries across BC and Canada.
- Marks get sent through TRAX from MyEd to Transcript.



Some PSI will ask for a one-time transcript share. Many others will ask for ongoing access for one year, which includes midterm marks in November and April.

---

---

# ONTARIO UNIVERSITIES & OUAC



A

You are a Group A applicant if **all** of the following are true:

- You are currently taking 1 or more courses at an Ontario high school
- and**
- You are under 21 on or before December 31, 2025,
- and**
- You have an OSSD **or** are working toward an OSSD with six 4U/M courses



B

You are a Group B applicant if you do not meet the Group A criteria.

For example, you are:

- Not currently taking a course at an Ontario high school
- A Canadian outside of Ontario
- An international applicant
- A postsecondary transfer student
- A mature applicant
- 21 or over, on or before December 31, 2025, and taking a course at an Ontario high school

- Ontario Universities use a system similar to EducationPlannerBC to manage all their schools.

- Students will need to make an account on the OUAC website and apply this way.

- Recommended Links:

- Undergraduate Application Guide & FAQ: [Here](#).
- Making your account: [Here](#).



---

# OFF TO THE US: COMMON APP & SAT/SAT PREP



- If students are looking to apply to Post-Secondaries in the US, they'll need the **Common App**.
    - It's the centralized hub for applications.
    - Students should ask for references/recommendation letters from a school and community person who can speak to their strengths.
    - These applications tend to be much more "well rounded" rather than just marks.
    - Website: <https://www.commonapp.org/>
  - Students will also need to arrange **College Admissions Testing** (often **SAT**) which can be done privately in Vancouver and elsewhere. Book fast! These often sell out quickly.
-

---

# PLANNING FOR APPLICATIONS

- We strongly recommend students make a record to track the post-secondaries they want to apply to. Include key **deadlines**, **tasks**, and **login** information.

School Name	Application Open Date / Deadline	Early Admission Deadline	Have I applied?	Next Steps/ Notes...
UBC	Early Oct / January 15	December 1	Ongoing	Need to finish personal profile Q's
Langara	Open Now / No Deadline	N/A	Yes	First on track and applied, first serve. Apply!
BCIT	Open Now / Until Full	N/A	Yes	Attend BCIT Big Info Night – Oct 8th

---

**Deadlines sneak up fast, so students should be getting ready now!**

---



---

# POST SECONDARY BC EVENT



- We're hosting a bunch of BC post-secondary institutions at our PSI fair on the morning of November 14.
- This is a great opportunity for students to ask PSI reps about a variety of schools and specific programs to get the most up-to-date program and application information.

---

# INDIVIDUAL PSI EVENTS ARE HAPPENING TOO!

Here's what we've booked so far:

- **McGill:** Wed. Oct. 1 at lunch (theatre)
- **UVic:** Thurs. Oct. 9 at lunch (theatre)
- **SFU**-- Faculty of Applied Sciences: Friday Oct.10 at FIT (theatre)
- **SFU** --Beedie School of Business: Tues. Oct. 21 at FIT (multipurpose)
- **Waterloo:** Friday Nov. 7 at FIT (theatre)

Stay tuned for more to come ...

---





# HELPFUL TIPS

---

## APPLICATION TIPS:

- Students who are applying to PSIs should apply to at least 3 schools, including a backup.
- Canadian PSIs are considerably more equal than people expect, particularly for undergraduate degrees.
- Recognize that a lot of colleges are first-come (and qualified) first-served.
- Spread out applications to avoid the stress of deadlines being similar. **Start now. This takes W-O-R-K!**
- If students are thinking of a gap year, it's still worth applying and then deferring their offer.
- *All post-secondaries have **academic advising services** that students can use to get free help! Admissions advisors at the PSIs are the experts!*

---

# CAMPUS TOURS

- We strongly recommend taking advantage of some of the great opportunities to attend **free** campus tours at post-secondaries you are curious about.
  - Go with friends and/or family to see if they can envision themselves there.
- Google "**post-secondary name + campus tours**" and find all of them. Here are a few examples:
  - UBC: [Here](#).
  - UVic: [Here](#).
  - SFU: [Here](#).
  - VCC: [Here](#).
  - Langara: [Here](#).







# COLLEGE VS UNIVERSITY

## COLLEGE VS. UNIVERSITY & UNIVERSITY TRANSFER

- The decision to start post-secondary at college or university is a big one.
- Some key differences: class size, connection to teacher, tuition cost, level of hands-on work, & student life.
- University transfer programs allow students to start in college and take the same classes offered in a university. They then apply to a university faculty at the end of the first or second year.
  - \*A good idea to finish their certificate
    - Odds of getting in are much higher this way.



# English

---

## ENGLISH REQUIREMENTS FOR PSI'S

- Post-Secondaries rank **English Proficiency** as the most important thing when applying.
  - Many PSI's and programs will have a cut-off grade for English 12/English First Peoples 12. Make sure you check yours under **program requirements**.
  - **By graduation if students have spent less than 5 years** in English speaking high schools, they will likely need to write an **English Placement Exam** (IELTS, TOEFL, etc.).
    - They will need to arrange registration and payment of this exam with either the post-secondary or one of the organizations that offer it in Vancouver.
-





---

# UBC INFORMATION & UPDATES

- Students graduating from Canadian high schools will be evaluated in a **Continual Admissions Process**.
  - Many of UBC's programs are competitive and have limited space, and not every student will receive an offer of admission after the first review of their application. In the event they cannot provide a decision upon first review, additional grade information with updated grades 12 course grades will be requested, and a subsequent review conducted. These reviews typically take place in **March** and **April**.
  - UBC has a great new tool for helping students see which students professors find the most successful in their programs: <https://you.ubc.ca/counsellors/ubc-degrees/>
  - UBC now drops students' lowest (non-program) course in their calculations if you have more than six Grade 12 academic + fine arts classes.
  - Want more information on how they evaluate? Check [here](#).
  - You can also attend a Virtual Application Workshop where they walk through everything with admission advisors.
-

---

# SFU INFORMATION & UPDATES



- SFU has changed their requirements, mostly to be more generalized in non-program requirements.
    - Need **60%** or better in a Math 11 class.
    - Need **70%** or better in English 11 or 12.
    - Now uses one single list of Grade 12 academics (example: No science or math 12 requirement anymore)
    - **5** Grade 12 **academics** are required.
    - More info [here](#).
  - **What's Changing: BC High-school Admission**
  - **Official grades only:** Now uses official interim grades via the BC Student Transcripts Service (STS) instead of self-reported grades.
    - Students will no longer be required to self-report their grades to SFU.
  - Offers now being made in November, December, and January means some students can get in based on completed Grade 11 marks only. But remember that's conditional and marks must be maintained.
-



---

# UVIC INFORMATION & UPDATES



- UVic does have **Grade 11 requirements**, especially in science-based programs, so check carefully.
  - UVic uses the "big four" model of academic requirements, which means they always require **four** Grade 12 academics. One of these will always be English 12.
    - They will use Grade 11 marks where Grade 12 marks are not yet available.
  - UVic has a helpful tool on each program's website that tells students the expected average on the "big four" to be accepted.
-

---

# MAJOR UNIVERSITY APPLICATION TIMELINES

## UBC

- Rolling admission from November to April
- Early Admission & Scholarship Deadline: December 1<sup>st</sup>
- Admission Deadline: January 15<sup>th</sup>
- Helpful Link: <https://you.ubc.ca/applying-ubc/dates-deadlines/>

## SFU

- Opens Oct 1. Rolling admission from November to April
- Scholarship Deadline: December 15<sup>th</sup>
- Admission Deadline: January 31<sup>st</sup>
- Helpful Link: <https://www.sfu.ca/students/admission/apply/timeline-and-evaluation.html>

## UVic

- Admission Deadline: January 31<sup>st</sup>
- Helpful Link: <https://www.uvic.ca/undergraduate/admissions/application-deadlines/index.php>

## U of T

- Admission Deadline: January 15<sup>th</sup>
- Helpful Link: <https://future.utoronto.ca/deadlines>

## McGill

- Admission Deadline: January 15<sup>th</sup>
  - Helpful Link: <https://www.mcgill.ca/gradapplicants/how-apply/you-apply-mcgill/application-deadlines>
-



---

# HOW POST-SECONDARY TIMELINES AND GRADES INTERPLAY

- Your home school (Kitsilano) shares marks to the Ministry of Education between **October 1<sup>st</sup>** and **July 10<sup>th</sup>**. There are some set windows and some optional ones.
    - This matters especially for online classes that are with other schools and finish at odd times.
    - **Online classes need to show a midterm (50% completion) mark by March 1st** for most post-secondaries and a completed mark by June.
  - Universities will still rank completed Grade 12 courses over anything else. Where there is no Grade 12 completed requirement, they will use a Grade 11 equivalent.
    - Students may be asked which courses they're taking later, especially for PSIs outside of BC.
    - Universities have been clear... Semester systems **will NOT hurt** applications.
  - Most BC PSIs now request ongoing access to students' marks through the STS service.
-

# GETTING AWAY FROM “UBC OR BUST”

UBC Vancouver Entering Program Averages for 2025

Degree Program Vancouver Campus	Mean Entering Average	Minimum Entering Average	Degree Program Vancouver Campus	Mean Entering Average	Minimum Entering Average
Pharmaceutical Sciences	95	89	Music	90	75
Engineering	97	95	International Economics	94	89
Commerce	95	85	Fine Arts	90	72
Kinesiology	94	85	Media Studies	91	71
Science	96	85	Design	95	91
Applied Biology	92	85	Arts	92	85
Food & Nutrition	91	85	Dental Hygiene	92	83
Urban Forestry	88	80	Indigenous Land Stewardship	82	74
Natural Resources	90	79	Food and Resource Economics	91	86

Mean entering ranges are approximate.





---

# PART III: SCHOLARSHIPS



---

# THREE TYPES OF SCHOLARSHIPS

## 1. School level

- Students must apply (in March/April) to be considered
- School Scholarship Program has over \$30,000 in scholarships; goal is to benefit the most students
- Allocated by Kits Scholarship Committee

## 2. Post-secondary level

- Many PSIs have scholarships for high grades, being of a marginalized community, and (sometimes) athletics.
- Check PSI site for scholarship info. Often have an earlier due date than general post-secondary application deadline.

## 3. Private/Non-profit

- Students can pursue private scholarships on their own time.
  - Students should check Teams, WAAG and search online themselves (not all are advertised at Kits).
-



# THE KITSILANO WEBSITE: SCHOOL SCHOLARSHIPS

The screenshot shows the Kitsilano Secondary School website. The header includes the school logo, name, and navigation links like 'Pay Fees', 'Translate', 'Login', and a search bar. The main navigation bar has categories: ABOUT US, FAMILIES, GUIDANCE AND SUPPORT, EXTRACURRICULAR, TEACHING AND LEARNING, and DISTRICT JOB OPPORTUNITIES. The 'GUIDANCE AND SUPPORT' menu is open, displaying a list of links. The 'Scholarships' link is circled in red, with a red arrow pointing to it. On the right side, the 'Announcements' section is visible, with 'NEWSLETTERS AND WAAG' also circled in red and a red arrow pointing to it. The footer shows a 'Celebrating teachers!' banner and a 'Upcoming Events' section.

**Kitsilano Secondary School**

Pay Fees Translate Login Search...

Donate Now VSB

ABOUT US FAMILIES GUIDANCE AND SUPPORT EXTRACURRICULAR TEACHING AND LEARNING DISTRICT JOB OPPORTUNITIES

World Teachers Day

Anti-Racism Policy and Procedures

ERASE/Anonymous Reporting Tool

Multicultural Liaison Workers

School Policies and Procedures

Student Council

Code of Conduct

Student Threat-Risk Assessment (VTRA)

Student Safety

Course Planning

Grad Info

Scholarships

Career and Post Secondary

Digital Citizenship

Severe Weather

Announcements

NEWSLETTERS AND WAAG

PASSWORD RESET

PARENT WORKSHOPS

**Celebrating teachers!**

On World Teachers Day, and every day, we celebrate teachers and give thanks for all they do to support students!...

Upcoming Events

/page/2608/guidance-and-support



---

# SCHOLAR TREE.CA

- **ScholarTree.ca** is a helpful private site for scholarships.
- Free to set up.
- Create your own profile so that it can personalize some scholarships for you.

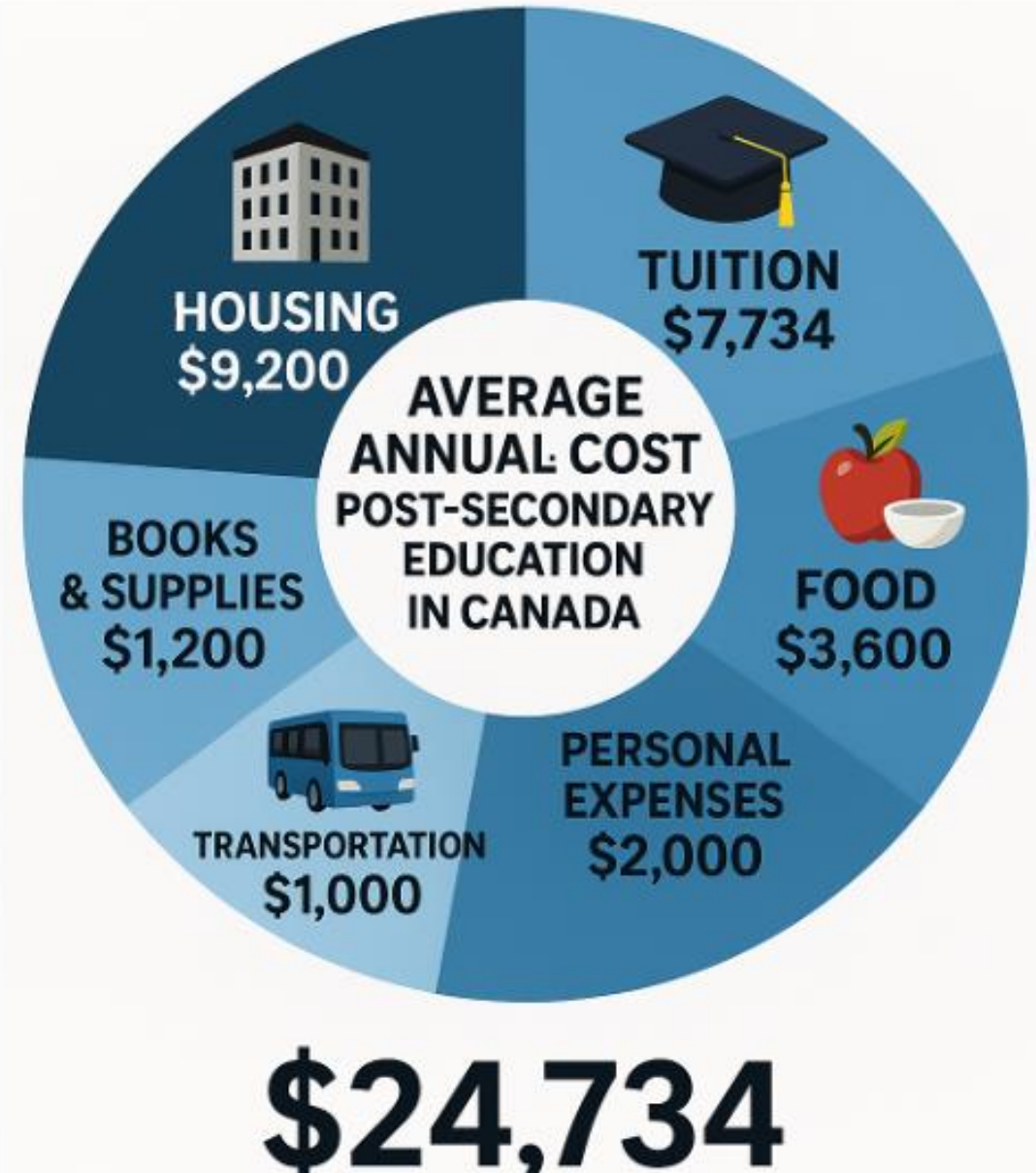




---

# COSTS OF UNIVERSITY

- Have an honest family conversation about finances & affordability.
- Students should apply for scholarships/bursaries but also have a plan B.
- Consider a student loan:  
<https://studentaidbc.ca/sabc-home-page>
- Consider a part-time job
- Discuss whether it is feasible for your child to live away from home or attend school in another city, out of the province, or outside of Canada.



## **BRITISH COLUMBIA UNIVERSITY COSTS**

**ESTIMATED ANNUAL**



**Tuition      \$6,862**



**Housing   10,000-14,000**



**Food      \$3,000-5,000**



**Books &  
Supplies   \$1,200-1,500**



**Transporta-   \$600-1,000  
tion**



**Personal   \$2,000-3,000  
Expenses**

---

**TOTAL   \$23,662-31,362**

## **ONTARIO UNIVERSITY COSTS**

**ESTIMATED ANNUAL**



**Tuition      \$7,500**



**Housing   8,000-14,000**



**Food      \$2,500-3,500**



**Books &  
Supplies   \$1,000-1,500**



**Transporta-   \$500-1,000**



**Personal   \$2,000-3,000  
Expenses**

---

**TOTAL   \$21,500-29,500**



---

# TUITION

## University

- Approximately \$6,000 to \$9000 per year plus books, student fees
- Living on campus will increase your costs by another \$12 000 to 20 000

## College

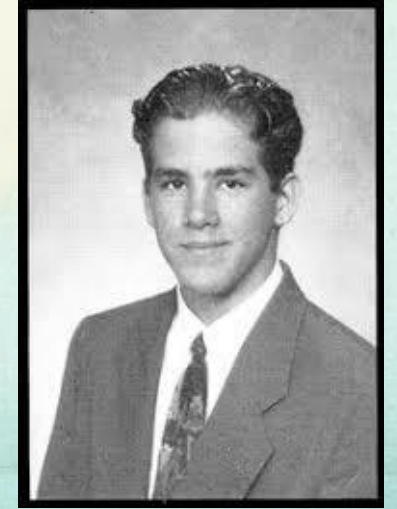
- Approximately \$5000 per year
- Career programs costs will vary according to the program

## Technical Institute

- Approximately \$6000 per year for a 2 year diploma
  - Approximately \$4400 for a 3-6 month certificate
  - Approximately \$6000 for a 7-12 month certificate
  - Approximately \$1900 for a 6 week apprenticeship training
  - Approximately \$6900 for a full time degree program
-

---

# THANK YOU!



Grade 12 Counsellor: Sally Leslie

Email: [scleslie@vsb.bc.ca](mailto:scleslie@vsb.bc.ca)



Link to Grade 12 Newsletter & PSI package: [https://vsbworld-my.sharepoint.com/:w:/g/personal/scleslie\\_vsb\\_bc\\_ca/EWYYks1hrclAko2SNqjcuXoBEq2rU6kStGflQJCCCKRAOMA?e=k150R1](https://vsbworld-my.sharepoint.com/:w:/g/personal/scleslie_vsb_bc_ca/EWYYks1hrclAko2SNqjcuXoBEq2rU6kStGflQJCCCKRAOMA?e=k150R1)

---

Thank you to Nick van Iersel at Van Tech for sharing his slides with Grade 12 counsellors!