

GRADS of 2029 Mixer (Grade 7 Visit)

Prince of Wales Secondary School
June 3, 2024



Prince of Wales
Secondary School

OUR
VSB



LAND ACKNOWLEDGEMENT

With deep gratitude and respect, we are honoured to be learning and unlearning on the ancestral and unceded lands of the x^wməθk^wəy'əm (Musqueam), Sk̓wxwú7mesh Úxwumixw (Squamish Nation) & səlilwətał (Tsleil-Waututh Nation).



x^wməθk^wəy'əm
(Musqueam)



Sk̓wxwú7mesh Úxwumixw
(Squamish Nation)



səlilwətał
(Tsleil-Waututh Nation)

Welcome Grads of...

Names forming a large 'M' shape: Troy, Chi, Ryder, Peggy, Michael, Alan, Olivia, Yu, Yubin, Alyssa, Xiaolu, Jaren, Liam, Emanuel, Matthew.

Names forming a large 'M' shape: Joseph, Finn, Kate, Jack, Chester, Nathan, Averil, Orrian, Miranda, Natascha, Ian, Cole, Theo, Thanh, Ryan, Ian, Aoi.

Names forming a large 'M' shape: Kasey, Nghi, Ting, Imani, Alycia, Alvin, Yaqub, Maddy, Isabella, Mikaela, Rosalyn, Eleanor, Caroline, Zoe, Martin, Paige, Chi.

Names forming a large 'M' shape: Yubin, Baohe, James, Daniel, Misha, Yanxin, Santiago, Allison, Jayden, Chloe, Yu, Max, Jade, Yammy.



welcome



David Cacchioni (he/him)
Vice-Principal



Sangeeta Kauldher (she/her)
Principal

Agenda



Transitioning to High School

Grade 8 Supports

Grade 8 Program

Grade 8 Timetable

Extracurriculars

How Can I be Successful?

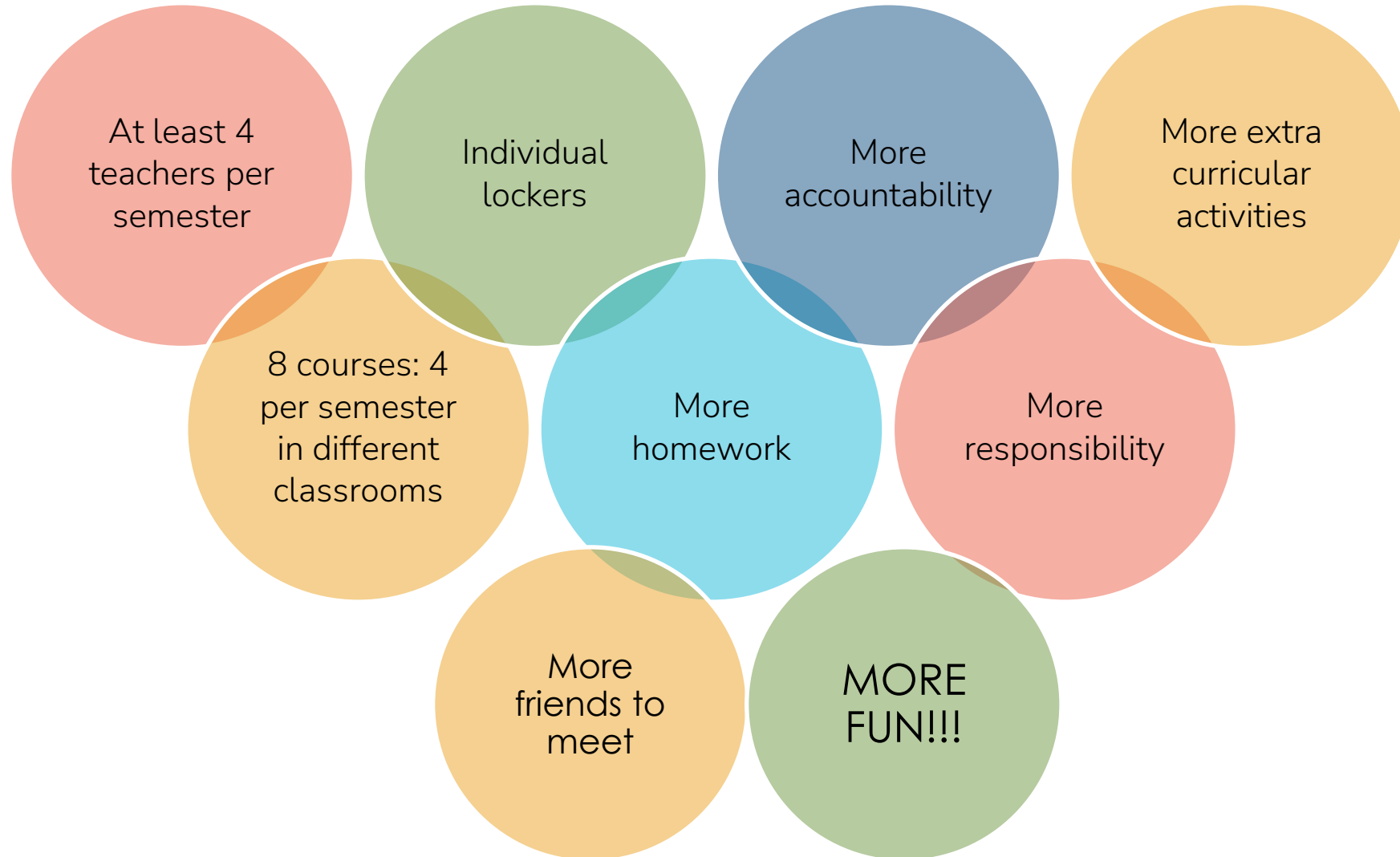
Grade 8 Experiences

Questions?

Transitioning to High School



HOW IS HIGH SCHOOL DIFFERENT?



Role of School Counsellor

- A supportive adult who helps students navigate through the entirety of high school.
- **To work on academic goals, social emotional goals, friend challenges, post-secondary planning (much later), and timetables.**
- **In Grade 8/9, students are grouped by alpha and shared amongst each counsellor as a team.**



Julie Baerg



Scott Morgan



Chris Tse

Grade 8 Supports (Additional)



Prince of Wales
Secondary School

OUR
VSB



Perveen Engineer
Safe & Caring Worker



Constable Eric Burrell
School Liaison Officer



Jessica Lyons
SACY Youth Engagement/Prevention



MURPHY 
Support/ Therapy Dog

Grade 8 Program



Prince of Wales
Secondary School

Required Courses

- English 8
- Math 8
- Social Studies 8
- Science 8
- Physical and Health Education 8 (Hockey option – Beginner or Competitive)
- Applied Skills 8 Rotation (Subjects usually include Metalwork, Woodwork, Foods and/or Textiles, and some years Business)
- French 8 [*French 10 (French Immersion) or Learning Strategies*]
- Career Education 8 (Off Timetable, FIT)

CHOICE: Fine Arts 8 Rotation

- Fine Arts 8 (Art, Drama, Media Design rotation)
- Band 8 Beginner
- Choir 8
- Band 8 Intermediate

OFF TIMETABLE: Jazz Band 8-12 or Strings Orchestra 8-12

Grade 8 Program

Typical School Day for Grade 8 Student (Semester Model)

- 4 courses for half the year
- Each class occurs everyday
- Attend 4 different classrooms
- Work with 4 different teachers

For Example....

Semester 1 (September- January)	Semester 2 (February- June)
Math 8	Science 8
English 8	PHE 8
Fine Arts Rotation	Social Studies 8
French 8	Applied Skills Rotation
Career Ed. 8 (Off Timetable / FIT)	

Grade 8 Program

BELL SCHEDULE

BUT.. We don't have bells!

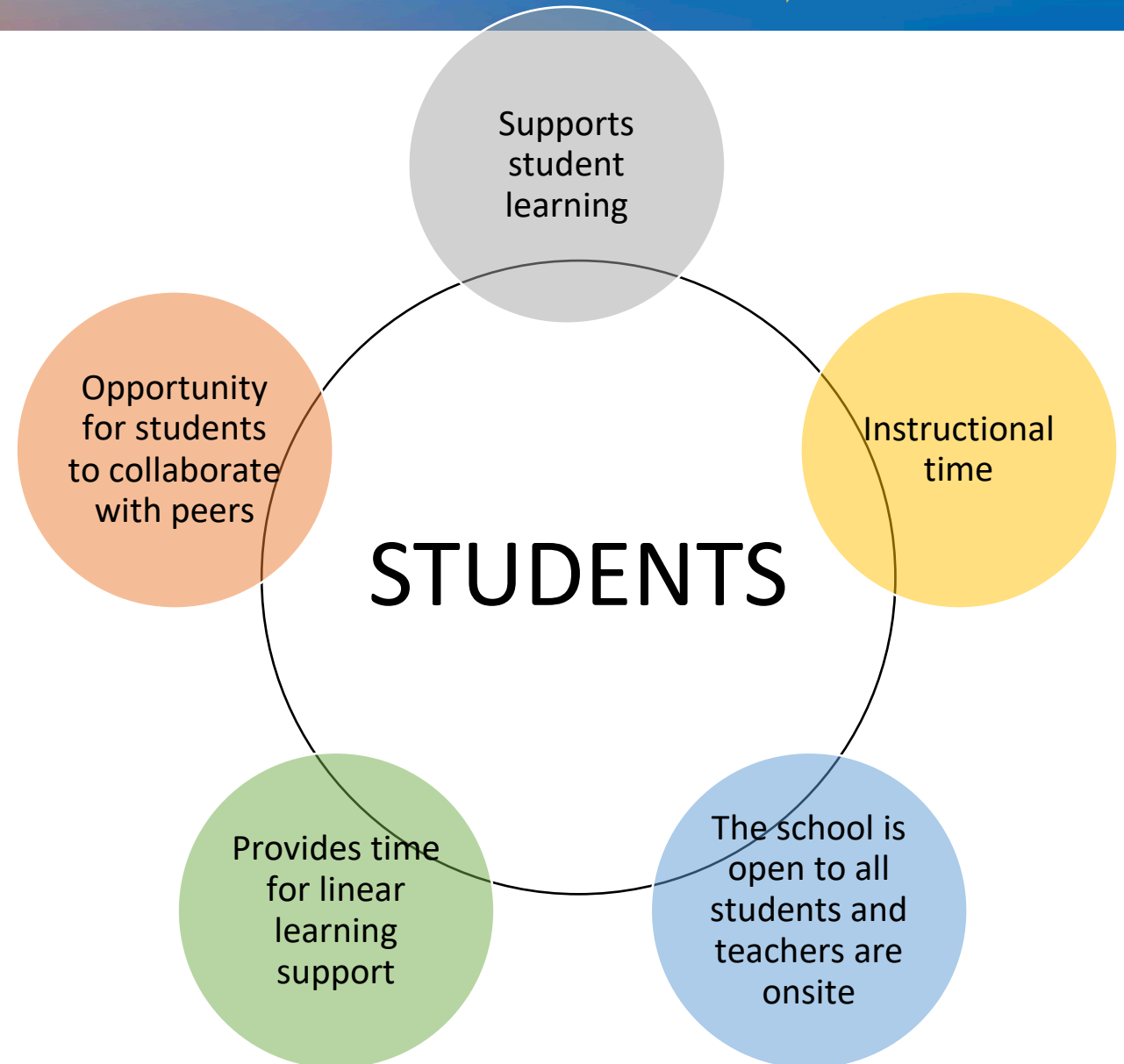
- Students are expected to know the schedule and be at their classes on time.
- Only a warning bell at 12:10 pm

	M / W	T / TH	F
FIT	8:40 to 9:20	n/a	n/a
Break	9:20 to 9:25	n/a	n/a
Block 1	9:25 to 10:25	8:40 to 10:00	8:40 to 10:00
Break	10:25 to 10:35	10:00 to 10:15	10:00 to 10:15
Block 2	10:35 to 11:35	10:15 to 11:35	10:15 to 11:35
Lunch	11:35 to 12:20	11:35 to 12:20	11:35 to 12:20
Block 3	12:20 to 1:40	12:20 to 1:20	12:20 to 1:40
Break	1:40 to 1:45	1:20 to 1:22	1:40 to 1:45
FIT	n/a	1:22 to 2:02	n/a
Break	n/a	2:02 to 2:05	n/a
Block 4	1:45 to 3:05	2:05 to 3:05	1:45 to 3:05

Grade 8 Program

FIT- Flexible Instructional Time

	M / W	T / TH	F
FIT	8:40 to 9:20	n/a	n/a
Break	9:20 to 9:25	n/a	n/a
Block 1	9:25 to 10:25	8:40 to 10:00	8:40 to 10:00
Break	10:25 to 10:35	10:00 to 10:15	10:00 to 10:15
Block 2	10:35 to 11:35	10:15 to 11:35	10:15 to 11:35
Lunch	11:35 to 12:20	11:35 to 12:20	11:35 to 12:20
Block 3	12:20 to 1:40	12:20 to 1:20	12:20 to 1:40
Break	1:40 to 1:45	1:20 to 1:22	1:40 to 1:45
FIT	n/a	1:22 to 2:02	n/a
Break	n/a	2:02 to 2:05	n/a
Block 4	1:45 to 3:05	2:05 to 3:05	1:45 to 3:05



What does Flexible Instructional Time (FIT) look like?

FIT time is a 40-minute period of Instructional Time built into the schedule on Monday, Tuesday, Wednesday and Thursday that allows students to have some measure of choice and control over their own learning.

Students are expected to be in a classroom or learning space, completing school work (either individually or in groups), meeting with teachers for support on classwork, working on projects under teacher supervision or getting caught up on missed learning.



Athletics

- Ultimate
- Volleyball
- Golf
- Tennis
- Basketball
- Table Tennis
- Badminton
- Soccer
- Hockey
- Rugby
- Cross-Country
- Swimming
- Wrestling
- Field Hockey
- Track & Field



Mr. Ben Lubiniski
Athletic Director
blubiniski@vsb.bc.ca

CLUBS

YOU CAN START A CLUB IF WE ARE MISSING SOMETHING!

ACG Culture Club

Animal Club

Arts Club Extent

Badminton Club

Blood Drive Club

Board Games Club

Business Club

Chess Club

Creative Writing Club

Dance Club

Debate & Public Speaking Club

Feed the Streets Club

Feminism Club

Film Club

Garden Club

Health Club

Key Club

Library Volunteer
Club

Model United Nations Club

Math Club

Multicultural and Diversity Club

Music Club

Peer Tutoring Club

Programming Club

Psychology Club

Reconciliation & Anti-Racism Club

Robotics Club

Science & Engineering Club

Student Social Club

Sustainability Club

Ultimate Club



How can you be successful in HIGH SCHOOL?

- Organization
- Time Management
- Homework (agenda)
- Being Informed (announcements)
- Confidence
- Motivated
- Asking for HELP!
- Making connections with new friends, teachers & counsellors



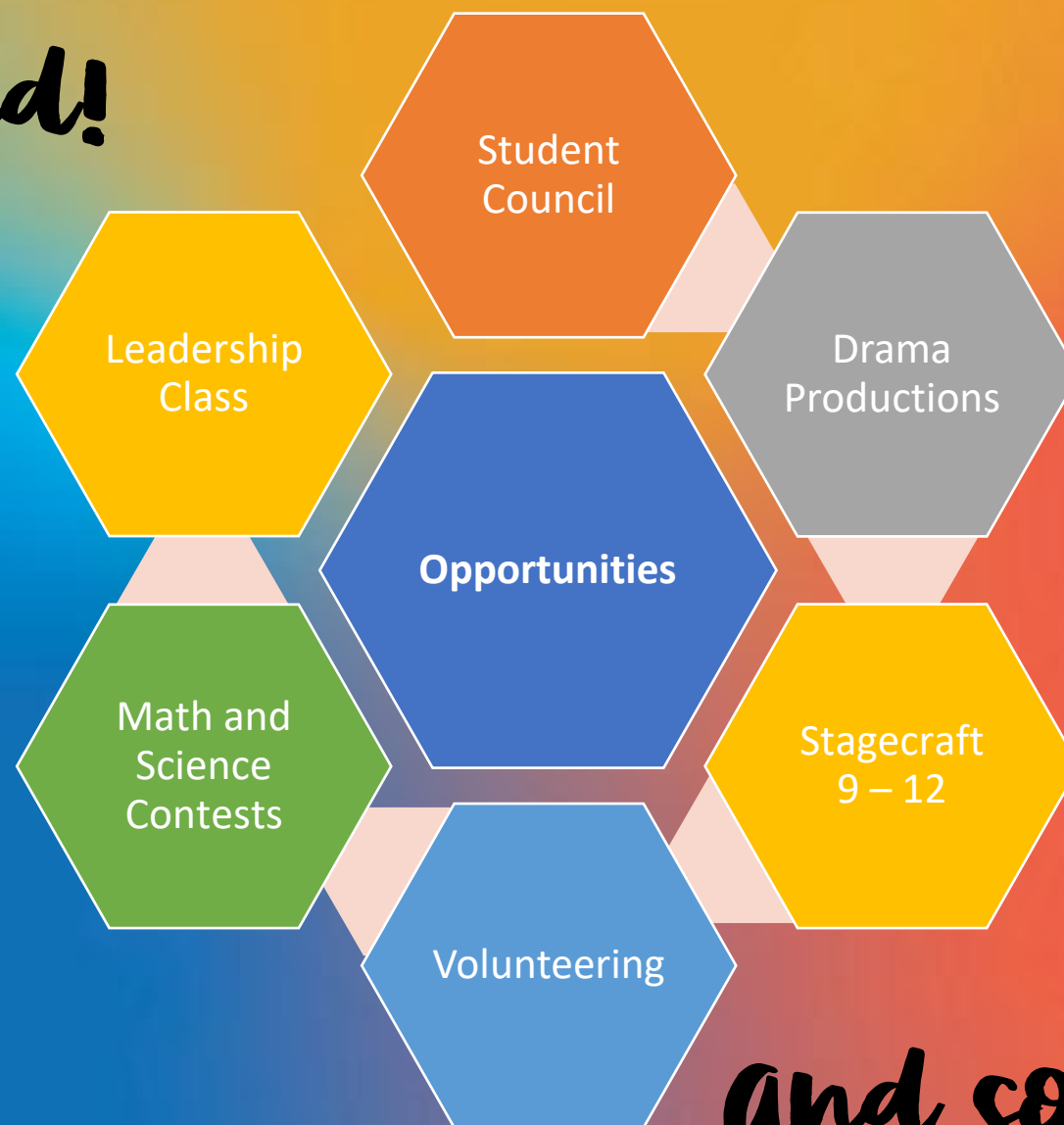
How can you be successful at PW?



Prince of Wales
Secondary School

OUR
VSB

get Involved!



and so much more!

Get Involved



ATTEND CLUBS
DAY



PARTICIPATE IN
ATHLETICS



VOLUNTEER FOR
SCHOOL EVENTS
AND/OR
COMMUNITY
ORGANIZATIONS
THAT INTEREST
YOU



MAKE NEW
FRIENDS



BE INFORMED!
(TEAMS/
ANNOUNCEMENTS)



Prince of Wales
Secondary School

OUR
VSB

GRADE 8 EXPERIENCES

ADVICE FROM THE EXPERTS!



THE GRADE 8 EXPERIENCE

Jay P.

GRADE 8 REP (2023-24)

I WISH MY GRADE 8 SELF KNEW THIS...

Emily L. & Erin W.

STUDENT COUNCIL CO- PRESIDENTS (2023-24)

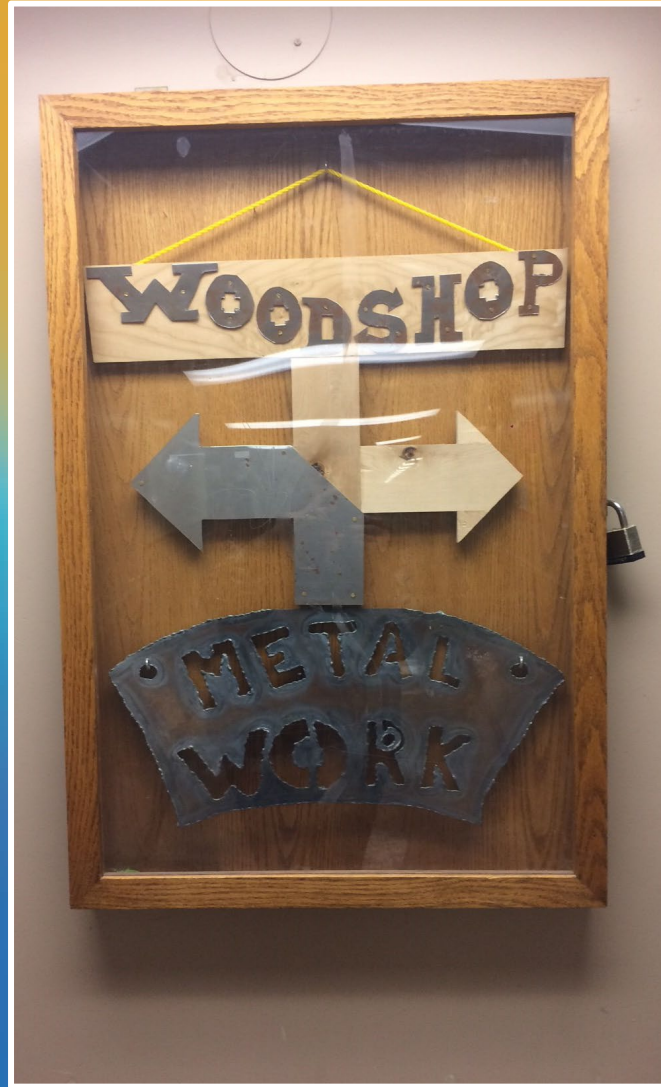


Fine arts performances





Fine arts Projects 



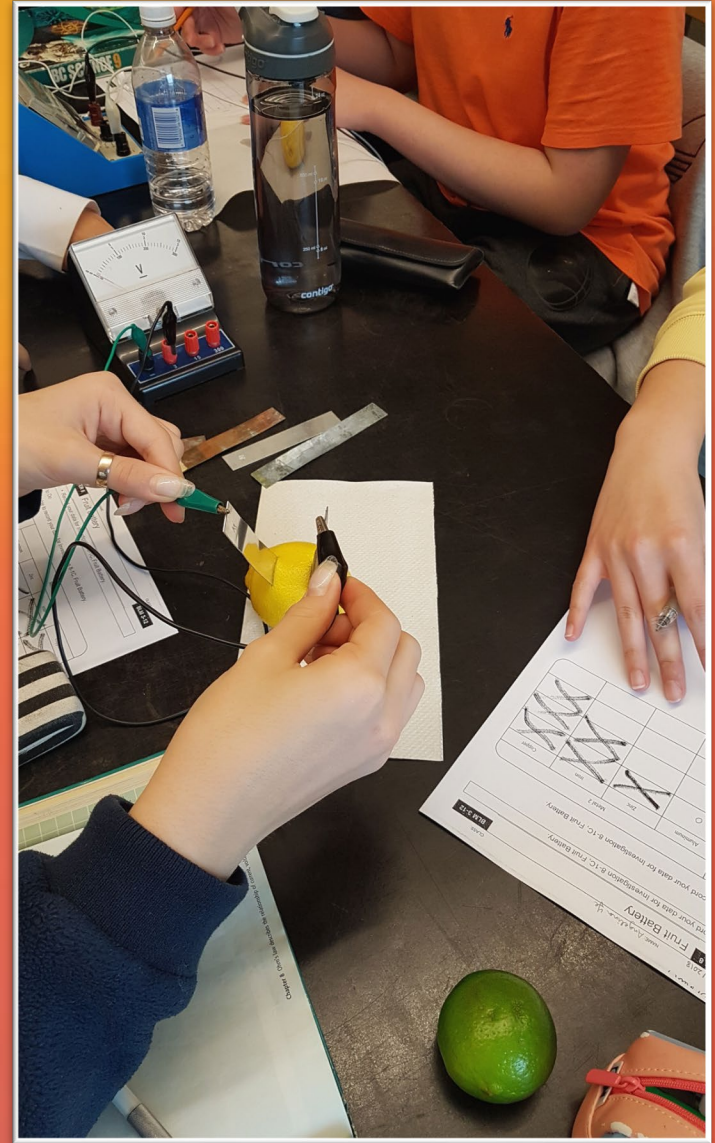
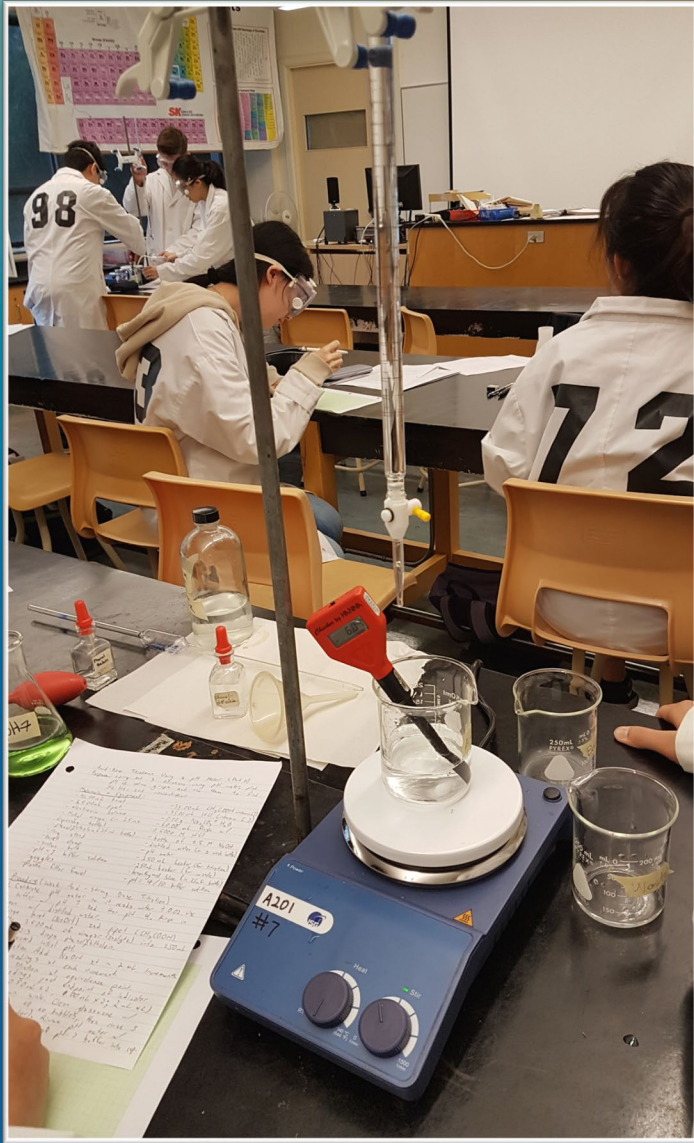
applied skills- wood & metal shops





Applied Skills- Food & Textile Labs





Classroom activities





Library - Learning Commons 



Student Council Events



A person wearing a white cap and a dark jacket is splashing water in a large lake. The background features a dense forest of evergreen trees on a hillside. The scene is captured in a wide-angle shot, emphasizing the vastness of the water and the surrounding landscape.

PW Grade 8 Camp - 2023

Grade 8 Camp



QUESTIONS

