



Edith Cavell Parent Busing Brochure December 2020

Edith Cavell Elementary

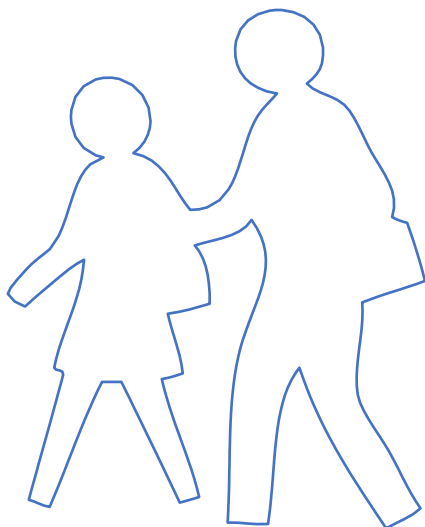
500 West 20th Avenue

Maple Grove Elementary Swing Site

6199 Cypress Street

Contact Information:

Phone: (604) 713-4932
School Website: cavell.vsb.bc.ca
School address: 500 West 20th Ave.
Principal: Marietté Smith



Index

Background on Cavell Seismic Upgrade	1
Maple Grove Swing Site	2
Cavell at Maple Grove Site	3
Bus Service	4
Pick-up/Drop-off at Maple Grove	5
Bus Route and Bus Schedule	6
School Bus Rules	7
Missing Parent Protocol	8

Background on Cavell Seismic Upgrade & Relocation Plan



Edith Cavell Elementary School

Cavell Elementary School, at 500 West 20th Avenue, will close to students on December 18, 2020 so that Seismic upgrade work to the existing facility can commence. Construction will begin in January 2021 and has a target date for completion of Spring/Summer 2022.

While Cavell school is being seismically upgraded, Cavell students will be attending school at a “swing site” located at 6199 Cypress Street, also known as Maple Grove (Swing Site) Elementary School.

Maple Grove Swing Site

Cavell at Maple Grove will maintain its own unique culture with a similar organization and classes. Every effort will be made to ensure there is as little disruption as possible during the construction phase. We are excited about the opportunities that the Maple Grove Swing Site will bring us.

Our school library will be set up in the library space located on the second floor of the Maple Grove building just down the hall from the school office.

The Douglas Park before and after school care will continue to be located at the Cavell Site and operate out of the Modular Building which does not require seismic upgrade work. This enables the Out of School Care to operate in the Cavell neighbourhood making it more convenient for families to pick-up and drop-off children each day. These students would be riding the bus to and from school each day.

The Douglas Park before and after school daycare will still be located at the Cavell Site. If your child is enrolled with Douglas Park Out Of School Care, they will be picked up and dropped off at the bus stop by Douglas Park Out Of School Care Staff.

School Code of Conduct: Administrators and staff will work with all students to help ensure that the school's Code of Conduct continues to be a priority. Our school will continue to be safe and unique learning environment where students welcome and respect their classmates.

Traffic and Pedestrian Safety:

Administrators as well as district staff and City Engineers have developed a plan for student drop-off and bus loading and drop-off zones. It is critical that parents respect drop-off and pick up regulations to ensure the safety of all children.

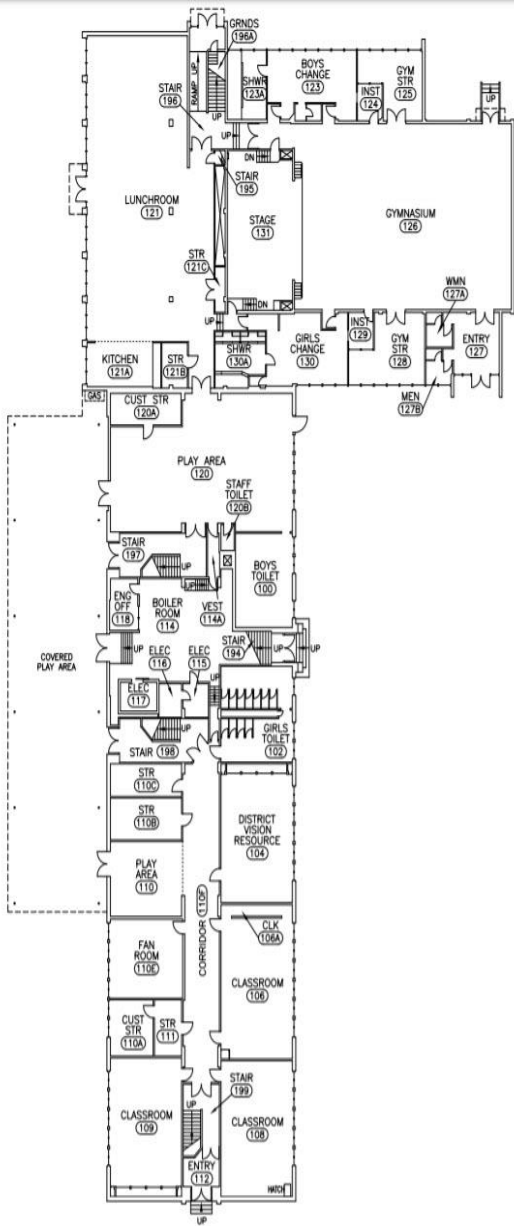
- Drivers must stay in their cars in the drop-off zones, this is not a parking area.

Supervision:

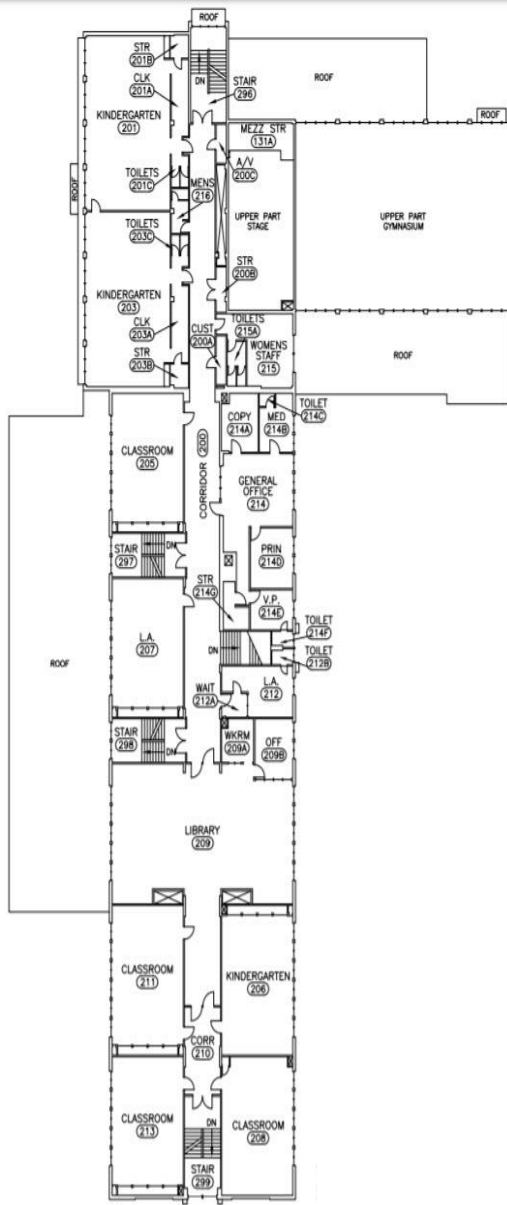
Consistent with our practice at the present Cavell site, during recess and lunch time, Cavell students at Maple Grove will be supervised by a combination of administrators, Supervision Aides, and School Support Workers. Consistent with the current number of supervision aides, Cavell at Maple Grove will have three (3) Supervision Aides who will work at the school site over recess and lunch.

Maple Grove Elementary Schedule	Cavell Elementary Schedule
9:00 School Starts	8:45 School Starts
11:00 – 11:30 Recess	10:30 – 11:00 Recess
12:28 – 1:00 Lunch	11:56 – 12:28 Lunch
3:00 End of School Day	2:45 End of School Day

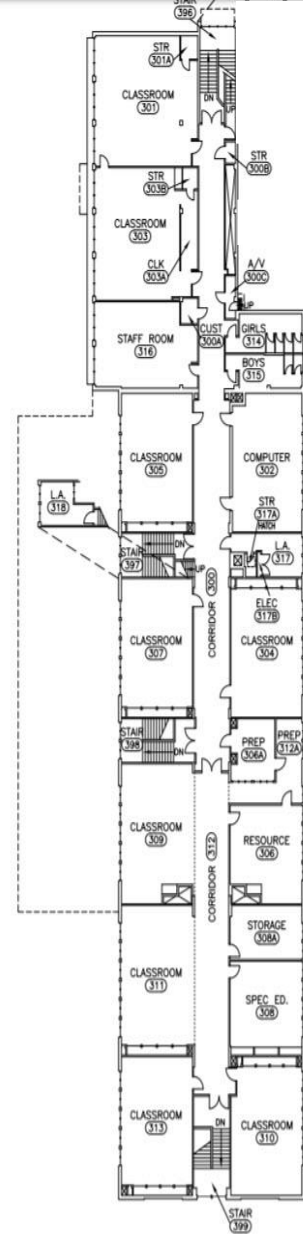
Cavell at Maple Grove



Ground Floor



Second Floor

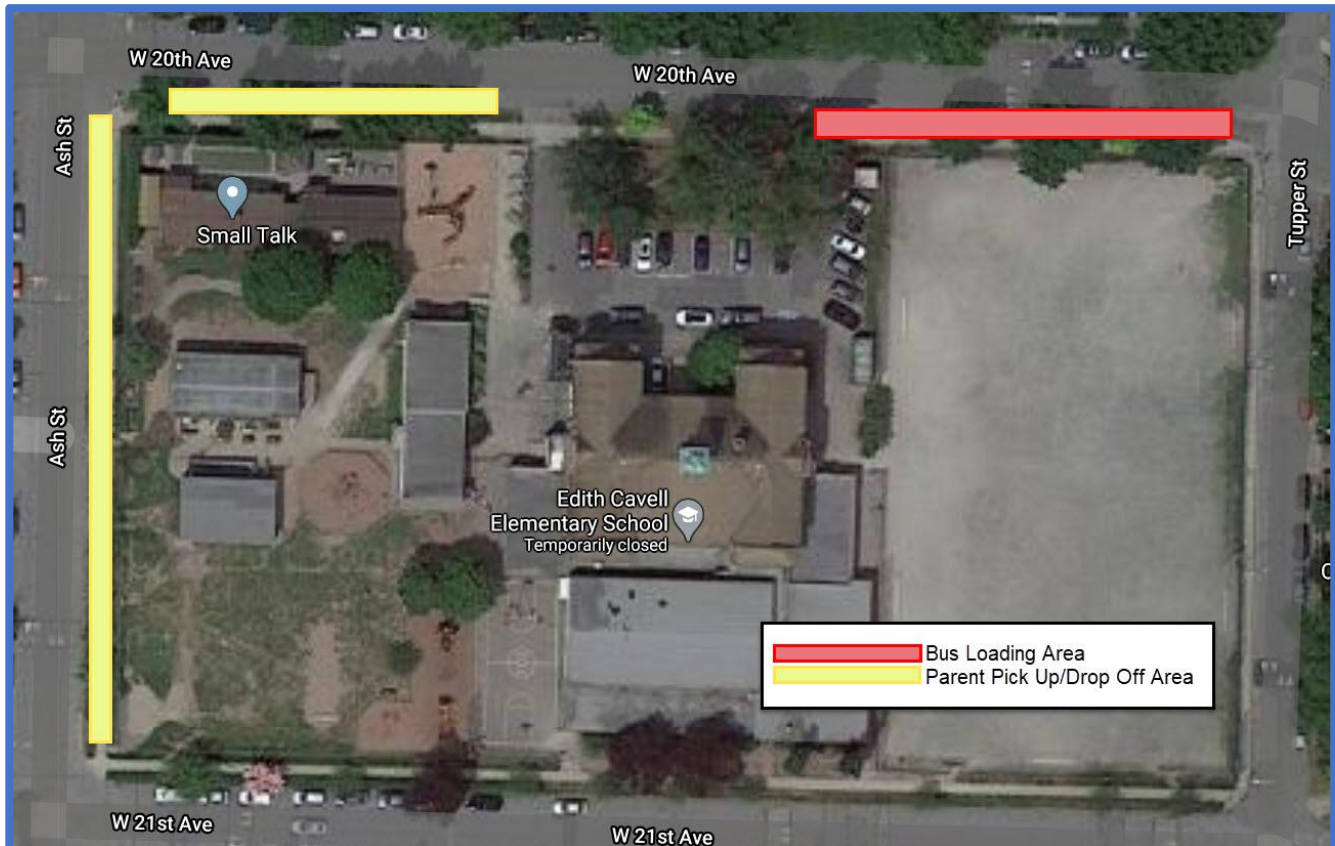


Third Floor

**This is a Maple Grove Swing Site School layout

- Cavell has fewer enrolling classes and therefore will not be utilizing all spaces

Bus Service



The VSB has secured bus service from Cavell to Maple Grove in the morning and from Maple Grove to Cavell at the end of the school day. Students will be picked up from Cavell and dropped off in the afternoon at the north end of the Cavell field on 20th Avenue. See map above.

Bus Pick-up and Drop off at Present Cavell Site

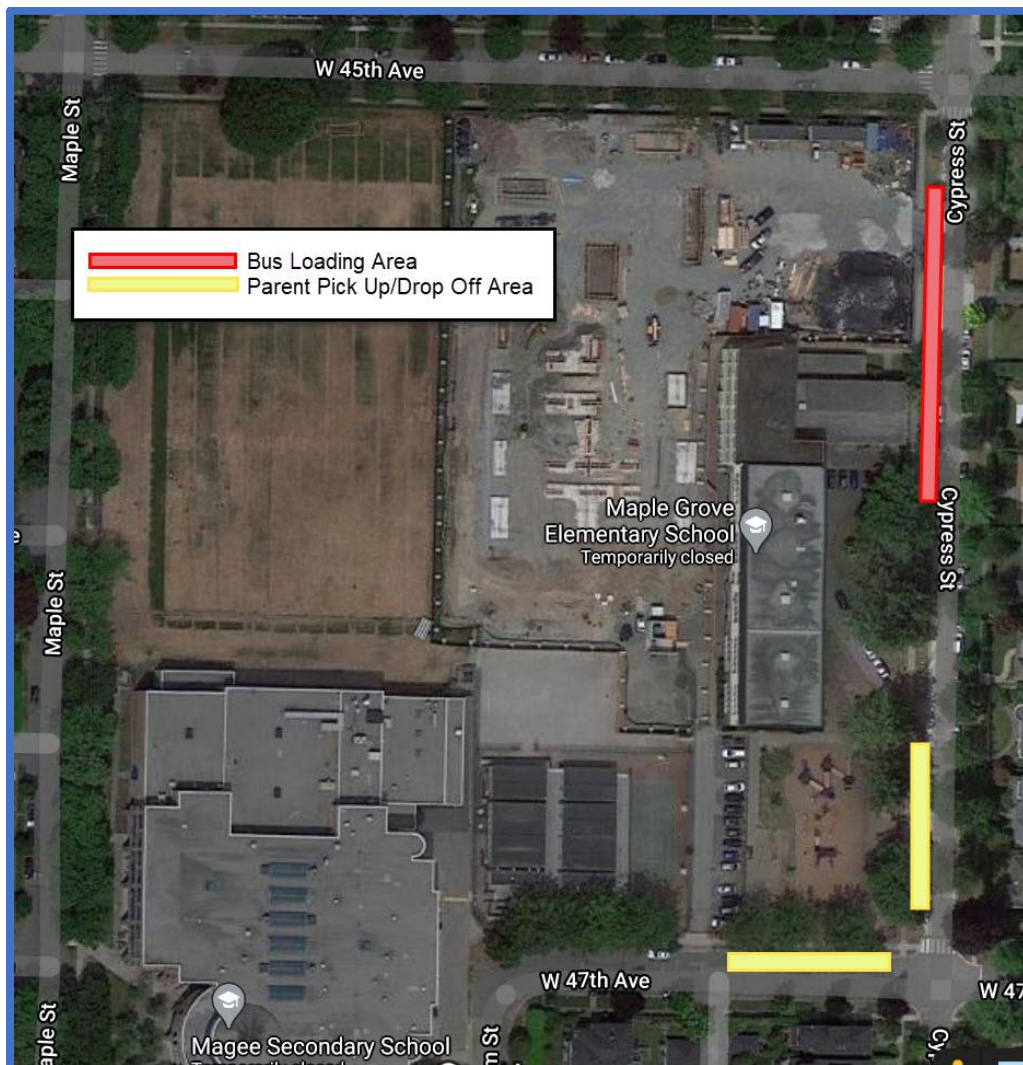
- It is the priority of the VSB to ensure student safety for bussing.
- Bus service to Cavell/Maple Grove sites will commence on January 4, 2021
- Bus service will be provided by Lynch Bus Lines.
- The ride time is approximately 20 minutes in duration.
- There will be six (6) buses every morning and afternoon.
- Backpacks: Lynch cannot transport large objects since there is no overhead storage, and the bus aisle must be clear. Students must transport their belongings on their lap.
- Students will be assigned to a bus. Please watch for a notice from the school to indicate bus assignment.
- It is a parent/guardian responsibility to supervise their child(ren) at the Cavell pick up/drop off site. Vancouver School District staff will not be present at the Cavell pick up/drop off site.

Suggested Route to Pick-up / Drop-off at Maple Grove Swing Site

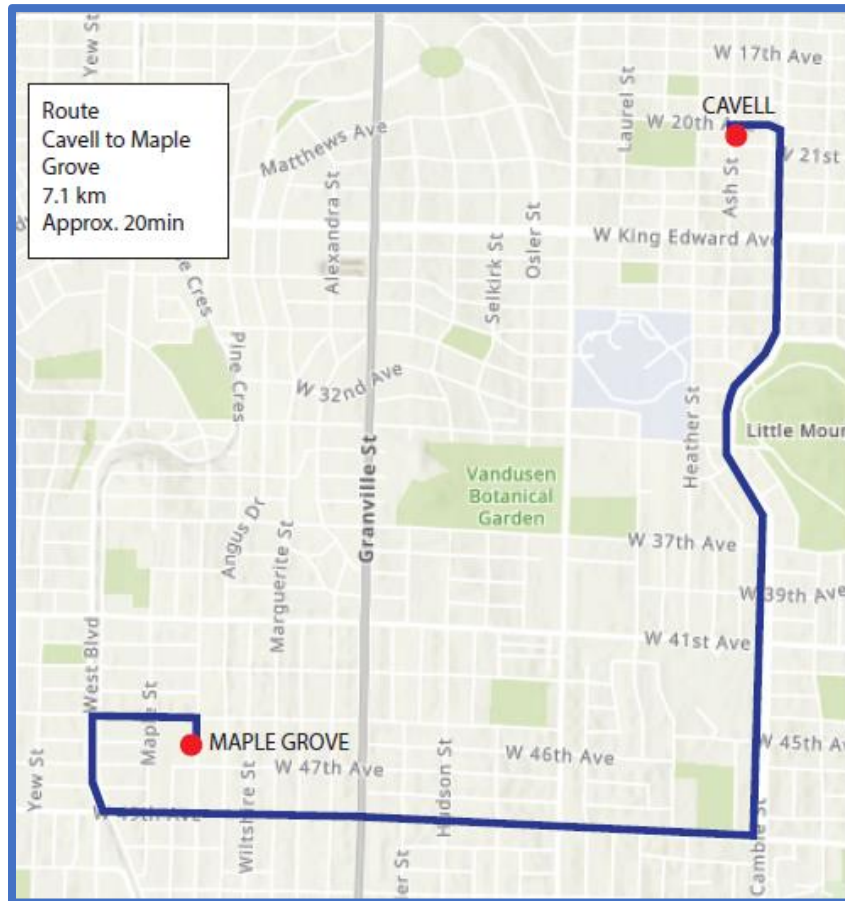
Traffic and Pedestrian Safety

VSB staff, School Administrators, and the City of Vancouver have been working to mitigate traffic problems that could arise with the increased school populations at the Maple Grove School site. To ensure the safety of all students, families and the community, please adhere to the drop off and pick up zone around the school. The area along West 45th avenue will be designated for a Maple Grove Pick-Up/Drop-Off location

There is no parking in front of the school. If you choose to drive your child(ren), please park nearby and walk your child(ren) to school.



Bus Route and Bus Schedule



* Route may change according to traffic and/or other factors.

Bus Service from Cavell to Maple Grove

	BUS 1, 2, 3	BUS 4, 5, 6
Arrives at Cavell	8:00 am	8:10 am
Departing Cavell	8:10 am	8:20 am
Arrives Maple Grove	8:30 am	8:40 am

Bus Service from Maple Grove to Cavell

	BUS 1, 2, 3	BUS 4, 5, 6
Arrives Maple Grove	2:45 pm	2:55 pm
Departing Maple Grove	2:55 pm	3:05 pm
Arrives at Cavell	3:15 pm	3:25 pm

School Bus Rules

Please ensure that you and your student read and understand the rules for riding the bus.

- Be 5 minutes early to the bus stop prior to loading time.
- Do not stand at the curb. Keep students in the designated waiting area.
- When the bus stops and opens the door, your student can approach the bus.
- When the driver closes the door to leave, do not approach the bus. Do not chase the bus as it is pulling away.
- Students must remain seated at all times; no body parts or other items are to go out the windows.
- Conversation is encouraged but please do not yell.
- There will be no eating or drinking on the bus.
- When arriving at the stop to unload, remain seated until the driver opens the door.
- Allow people sitting in the seat in front of you to leave first. Do not push pass other passengers.
- Once out the door, take a few steps away from the bus. Stopping at the door delays other passengers unloading.
- Have younger passengers who are waiting for parents wait where the driver can see them.
- Please be at the bus stop 5 minutes early for the afternoon drop off time.
- Once your student has unloaded from the bus their safety is your responsibility. The driver will do their best to watch for your student; however, there are up to eighty (80) students on the bus and only one driver.
- Young students that do not have a parent present can re-board the bus so they are not left alone. They will either stay on the bus for a second trip if applicable or will be returned to the school. Should a family use this service routinely they may lose their bus privileges.
- Video recordings may be conducted on the school buses to ensure safety, order and discipline, including prevention of vandalism.



Missing Parent Protocol

Notice to parents – Please remember that when your student is not on the bus it is the family's responsibility to ensure the safety of the student. Lynch Bus Lines will assist as best we can. Please keep in mind that the driver is not permitted to leave the bus unattended to look for your student. Instruct your student to remain near the bus where the driver can see them if someone is not there to pick them up.

- Please be at the bus stop 5 minutes earlier than the bus is scheduled to arrive.
- Instruct young students to wait near the front of the bus where the driver can see them if the student cannot find you.
- Instruct your student to re-board the bus if there is no one there to accept them.
- If the bus has completed the route, your student will be returned to the school for you to accept there.
- Drivers that are returning students to the school will contact our office to advise. Our office will contact the school to inform the school that a student is returning to them.
- Students that are brought back to the school will be walked into the school office by the driver.

Supervision for Bus Students:

- School staff meet the first bus in the morning at Maple Grove and will supervise children until school starts. School staff will supervise children until the last bus is boarded at the end of the day. It is the parent's responsibility to get them on the bus in the morning and to be there to pick them up in the afternoon.
- Each bus driver will have a list of student ridership to ensure student safety.

