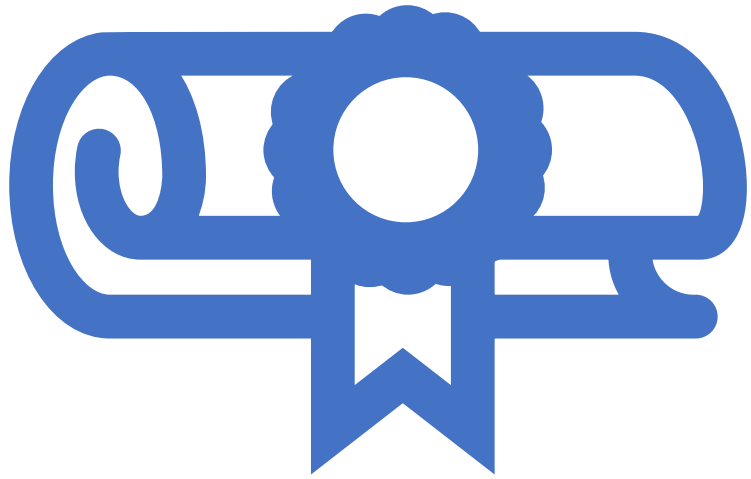




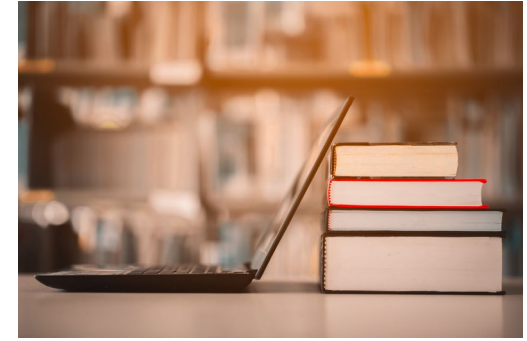
# Course Planning 2023



# GRADE 9 COUNSELOR

TBA – To Be Announced

# THE BIG 5



## MUST TAKE ALL 5:

- MATH 9
- ENGLISH 9 (or Challenge)
- SCIENCE 9
- SOCIAL STUDIES 9 (or Challenge)
- PHYSICAL & HEALTH ED. 9

## CHOOSE 3:

- TWO ELECTIVES
- 1 LANGUAGE – French 9, Spanish 9, Mandarin 9, Japanese 10
- SKILLS DEVELOPMENT

# COURSE COMPARISON 8 vs 9

## GRADE 8

English 8
Challenge Studio 8
Socials 8
Challenge Studio 8
Math 8
Science 8
PE 8
Language/ Skills
French 8
ADST Market / Foods /Wood
Fine Arts Drama / Art / Dance / Choir

## GRADE 9

- English 9  
Challenge, Studio 9
- Socials 9  
Challenge, Studio 9
- Math 9
- Science 9
- PE 9
- Language 9 (Mandarin 9, French9,  
Spanish 9 Japanese 10)
- Learning Strategies (Skills)
- Electives –Choose 2
- Fine art /Applied Skills
- Challenge Studio Critical Thinking
- ELC 2 or 3 (for Transitional or English9)

# Grade 9 Elective Options (at this time)

- Metalwork and Jewellery
- Electronics and Robotics
- Food Studies
- Textiles
- Woodwork
- Dance
- Drama
- Music – (concert band, strings, choir etc.)
- Visual Arts



# Course Planning Booklet



[ERIC HAMBER SECONDARY  
SCHOOL \(WINDOWS.NET\)](#)



CAN BE FOUND ON THE SCHOOL  
WEBSITE UNDER – GUIDANCE  
SUPPORT/PLANNING

# MyEd Course Selection Portal

- The MyEd Course Selection Portal will be opening soon.
- The Portal remains open for about three weeks.
- The Portal then will be closed.
- After this, all changes can only occur with counselor assistance.

# GRADE 8 TEAMS PAGE

Please pay attention to the Grade 8 Teams Page for, Portal openings and closings and any other changes or information related to course planning.







START

CREATES GOALS

DEVELOPES STUDY PLAN

ATTENDS CLASSES

USES FAMILY & FRIENDS FOR SUPPORT

ASKS FOR HELP IF NEEDED

SUCCESS

