



## Important Upcoming Dates

### Friday, May 2

- Walkathon

### Monday, May 5

- Div 3,10,11 at Workshop

### Tuesday, May 6

- Div 6,7 at Museum of Anthropology

### Wednesday, May 7

- Gauss Prep Test at lunch
- Gr 7 Badminton at Tupper
- Several Classes on Field Trip to Magee



## Walk-a-Thon Fundraiser— Tomorrow: Friday May 2



Please join us tomorrow, Friday, May 2 for the Walkathon.

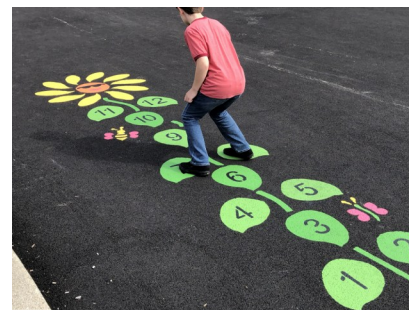
After you drop your child(ren) off at their entrance, join us at the grass field.

Students will begin to assemble on the grass field at 9:15 am.

The warm up will begin shortly after and the students will run until 10:30 am.

At the end of the day, students will receive a frozen treat from the Maple Grove PAC!

Money raised from the Walk-a-Thon will go two towards more funding for music instruments and exciting painted playground lines for snakes and ladders and hopscotch.



## UBC Study— Reminder

Catherine Ann Cameron, PhD, Honorary Emerita Professor of Psychology, is studying what might lead children to follow rules at home and school. They are very interested both in what children actually do, and what parents do to encourage children to follow rules. They have developed some fun games, stories and brief interviews for children that they would like to try out with a small group of children from Kindergarten through to Grade 5 and they could

also like to give their parents a few questionnaires to fill in to see if they will be useful for Dr. Cameron to use when they conduct their major study next year. They would be most grateful to you if you would be willing to volunteer for you and your child to help them out, of course, your participation is entirely voluntary.

See page 3 for more details.

Please contact Dr. Cameron if you are interested [acameron@psych.ubc.ca](mailto:acameron@psych.ubc.ca).

## Earthquake Drill Thursday, May 8

Thursday, May 8 is our district wide earthquake evacuation and student release drill. At approximately 2 pm, we will simulate an earthquake in Vancouver.

Parents and guardians of kindergarten students are welcome to pick up their kindergarten students and siblings after 2:00 pm. There will be waiting as we prepare our first aid station and release procedures.

## Summer School at Maple Grove! - Reminder



Do you know that Maple Grove will be a summer school site in July? Summer School will run from July 3 until July 18. There will be two sessions: 8:30-12:00 and then 12:30-4:00.

Four of our Maple Grove teachers will be working. If you are considering sending your child to summer school, you might want to consider registering your child in one of the following classes:

**Ms Tiffany Chan** is teaching "Getting Ready for Grade 4" from 8:30-12:00

**Ms Sharon Hales** is teaching "Fun With Math: Kindergarten and Grade 1" from 8:30-12:00 and 12:30-4:00 (the same program will be taught in the morning and in the afternoon)

**Ms Chloe Kao** is teaching : "Getting Ready for Grade 1" from 8:30-12:00 and 12:30-4:00 (the same program will be taught in the morning and in the afternoon)

**Ms Julie Phelps** is teaching: "Literacy Through Music, Dance, and Drama Kindergarten and Grade 1" from 8:30-12:00 and 12:30-4:00 (the same program will be taught in the morning and in the afternoon)

Registration for summer school begins on April 23 and classes tend to fill up quickly. More information can be found by visiting: <https://www.vsb.bc.ca/page/5211/summer-learning>

## More Kindergarten Cooking





# DEVELOPMENT OF INTEGRITY STUDY



Hi! We're the UBCChild Study Lab!

We're a group of developmental researchers at the University of British Columbia studying how children think, learn, and develop both socially and cognitively.

In the past four years, we have led a longitudinal study exploring moral development in children between the ages of four and 12, with findings such as:

- Children progressed well each year in their understanding of others.
- Older children and girls broke fewer rules in games we played with them than younger children and boys.
- We need to learn more about children's personality to discover more about personal traits and moral development.

## How can you help?



After three years of research, we are excited to begin a **new phase**, exploring additional variables and associations!

We would love for you to **join us in this next round of discovery**.

If interested, please email [jsong001@student.ubc.ca](mailto:jsong001@student.ubc.ca) with the subject line "**Integrity Pilot**" and we will send you further details.





Sun	Mon	Tue	Wed	Thu	Fri	Sat
				<b>1</b>	<b>2</b> Walkathon!  Div 20 Field Trip	<b>3</b>
<b>4</b>	<b>5</b> Div 3,10,11 Workshop	<b>6</b> Div 6,7 Field Trip	<b>7</b> Several Classes to Magee for Performance  Gauss Prep Test	<b>8</b> Big One at 2 pm Earthquake Drill  Cedar Pod— Salmon Release	<b>9</b> Div 12  Div 20 Field Trip	<b>10</b>
<b>11</b>	<b>12</b> Div 6,7,10 Workshop	<b>13</b> Div 21,22,23 Field Trip  Div 4,5,6 Workshop	<b>14</b> Div 7,8 UBC Geering Up	<b>15</b> Div 12 Field Trip  Div 10,11 UBC Geering Up	<b>16</b> Div 12 Field Trip	<b>17</b>
<b>18</b>	<b>19</b> Victoria Day School Closed	<b>20</b>	<b>21</b> Div 3,4,8 Workshop  Div 5 Workshop	<b>22</b>	<b>23</b>	<b>24</b>
<b>25</b>	<b>26</b> Div 4,11 Workshop	<b>27</b>	<b>28</b> Div 12,13,14 Field Trip	<b>29</b>	<b>30</b> Div 4 Field Trip	<b>31</b>





## Maple Grove Elementary

Office: 604-713-5356

Absences: 604-713-5159 (Code 48)

Please state reason for absence

**NS** No School for students

**PD** Professional Day - Staff only

**(2:00)** 2:00 p.m. Dismissal - P/T Conference

### September

**Tue, 3** - First Day of School

**Fri, 20** - Professional Day (No School)

**Mon, 30** - National Day for Truth and Reconciliation Day (No School)

### October

**Mon, 14** - Thanksgiving Day (No School)

**Mon, 21** - Parent-Teacher Conference (2:00 pm dismissal)

**Wed, 23** - Parent-Teacher Conference (2:00 pm dismissal)

**Fri, 25** - Professional Day (No School)

### November

**Mon, 11** - Remembrance Day (No School)

**Fri, 22** - Professional Day

### December

**Mon, 16** - Written Update Goes Home

**Mon, Dec 23 to Fri, Jan, 3** - Winter Vacation (No School)

### January

**Mon, 6** - Back to School

**Wed, 15** - Professional Day (No School)

### February

**Fri, 14** - Professional Day (No School)

**Mon, 17** - Family Day (No School)

### March

**Mon, 10** - Written Update Goes Home

**Mon, 17 to Fri, 28** - Spring Break (No School)

**Mon, 31** - Back to School

### April

**Fri, 18** - Good Friday (No School)

**Mon, 21** - Easter Monday (No School)

**Tue, 22** - Parent-Teacher Conference (2:00 pm dismissal)

**Thu, 24** - Parent-Teacher Conference (2:00 pm dismissal)

**Mon, 28** - Professional Day (No School)

### May

**Mon, 19** - Victoria Day (No School)

### June

**Wed, 25** - Summary of Learning Goes Home

**Thu, 26** - Last Day for Students

**Fri, 27** - Administrative Day (No School)

## September 2024

SUN	MON	TUE	WED	THU	FRI	SAT
1	2 NS	3	4	5	6	7
8	9	10	11	12	13	14
15	16	17	18	19	20 PD NS	21
22	23	24	25	26	27	28
29	30 NS					

## October 2024

SUN	MON	TUE	WED	THU	FRI	SAT
		1	2	3	4	5
6	7	8	9	10	11	12
13	14 NS	15	16	17	18	19
20	21 (2:00)	22	23 (2:00)	24	25 PD NS	26
27	28	29	30	31		

## November 2024

SUN	MON	TUE	WED	THU	FRI	SAT
					1	2
3	4	5	6	7	8	9
10	11 NS	12	13	14	15	16
17	18	19	20	21	22 PD NS	23
24	25	26	27	28	29	30

## December 2024

SUN	MON	TUE	WED	THU	FRI	SAT
1	2	3	4	5	6	7
8	9	10	11	12	13	14
15	16	17	18	19	20	21
22	23 NS	24 NS	25 NS	26 NS	27 NS	28
29	30 NS	31 NS				

## January 2025

SUN	MON	TUE	WED	THU	FRI	SAT
			1 NS	2 NS	3 NS	4
5	6	7	8	9	10	11
12	13	14	15 PD NS	16	17	18
19	20	21	22	23	24	25
26	27	28	29	30	31	

## February 2025

SUN	MON	TUE	WED	THU	FRI	SAT
						1
2	3	4	5	6	7	8
9	10	11	12	13	14 PD NS	15
16	17 NS	18	19	20	21	22
23	24	25	26	27	28	

## March 2025

SUN	MON	TUE	WED	THU	FRI	SAT
						1
2	3	4	5	6	7	8
9	10	11	12	13	14	15
16	17 NS	18 NS	19 NS	20 NS	21 NS	22
23	24 NS	25 NS	26 NS	27 NS	28 NS	29
30	31					

## April 2025

SUN	MON	TUE	WED	THU	FRI	SAT
		1	2	3	4	5
6	7	8	9	10	11	12
13	14	15	16	17	18 NS	19
20	21 NS	22 (2:00)	23	24 (2:00)	25	26
27	28 PD NS	29	30			

## May 2025

SUN	MON	TUE	WED	THU	FRI	SAT
				1	2	3
4	5	6	7	8	9	10
11	12	13	14	15	16	17
18	19 NS	20	21	22	23	24
25	26	27	28	29	30	31

## June 2025

SUN	MON	TUE	WED	THU	FRI	SAT
1	2	3	4	5	6	7
8	9	10	11	12	13	14
15	16	17	18	19	20	21
22	23	24	25	26	27 NS	28
29	30 NS					