



## Important Upcoming Dates

**Friday, September 12**

- Assembly for Students

**Monday, September 15**

- Book Fair Begins

**Thursday, September 18**

- PAC Meeting 9:05 in Multi-Purpose Room

**Friday, September 19**

- Pro-D: No School for Students



## Back to School

### Moving To New Classes, Class Organization, Student Placement, and Split Classes

We plan to move our students into their new classes on Friday (tomorrow) or Monday when the school boards gives us approval.

Placing students in classes is a carefully discussed process. Often, there are parental requests for specific teachers, grade level, or classmates. We try to place the students based on our best professional judgement.

We do have split classes, also known as multi-grade classes. There are

some parent concerns around multi-grade classes but research has shown they enhance learning both academically and socially.

If you have any questions about class placement or multi-grade classes, please feel free to contact the principal.

**Be prepared for your child to be in a multi-grade classroom. Your child's academic needs will be met regardless of their grade in a multi-grade classroom.**

## PAC Blog

New to our school community? Stay informed and involved by subscribing to the PAC Blog. See link to get updates on news, events, and ways to

participate—it's quick and easy!

Link:

[themaplegrovepac.wordpress.com](http://themaplegrovepac.wordpress.com)

## Book Fair: September 15 to 18



Support the Maple Grove Book Fair. From **Monday, September 15 to Thursday, September 18**, our library will be open for students to purchase

books and accessories during their class library times.

All profits go to support the library.

## Maple Grove Parent Advisory Committee (PAC): Thursday, September 18

The Maple Grove PAC (Parent Advisory Committee) is made up of dedicated parents who support our children and community in countless ways. In addition, they organize our the school lunches for which will beginning in a few weeks.

Come join us on **Thursday, September 18** at 9:05am for parent coffee in library and then at 9:15 am for a PAC meeting. We will talk about how parental contribution of time and financial support can help your children.

**Student Photo  
Day: Tuesday,  
September 23**

Tuesday, September 23 is individual student photo day.

Kindergarten students will have their photos taken first.

**Save the Date! PAC  
Carnival: Thursday,  
September 25**

Mark your calendars! The PAC Carnival is coming up on **Thursday, September 25**, and it's one event you won't want to miss. Join us for an afternoon of fun, games, food, and

community spirit. It's a great way for families to connect and celebrate together. More details coming soon—stay tuned!

**Student Insurance**

Ahead of the upcoming school year, we would like to share that the VSB is once again offering parents the ability to purchase voluntary student accident insurance plans if they choose. These plans offer coverage for students and their families against accidental injury, unexpected medical expenses and critical illness. The two companies offering this coverage are Insuremykids and Industrial Alliance (The Family Accident Reimbursement Plan). These plans are ideal for supplementing costs not covered by provincial health insurance or existing employer extended health and dental plans.

Families can find more information and register online to purchase and participate in any of these insurance plans by using the URL provided here:

<https://insuremykids.com/schoolresources/>

<https://www.solutionsinsurance.com>

There is no administration required on the part of the school. If any of your families have questions about either one of these programs, they can contact the company through the contact information on their website.

**Student Athletics  
and Parent  
Volunteers  
Needed!**

**Soccer:** If your child is in Grades 5, 6, or 7 and is interested in joining a Maple Grove soccer team this year, they should attend a student *interest meeting* on **Friday September 5 AND** return a *completed permission form* by **Tuesday September 9th**.

**Cross Country:** The Maple Grove Cross-Country Running team will begin practice during the week of September 15 (days/times TBD). Students will be able to collect permission forms from their classroom teachers, and they should be completed and returned by/on the first day of practice. The district-wide Mega Meet will be held on the afternoon of October 21<sup>st</sup> at Trout Lake Park (details provided closer to the date).

**PARENT VOLUNTEER COACHES/  
DRIVERS NEEDED!!!**

Please contact Elizabeth Winston ([ewinston@vsb.bc.ca](mailto:ewinston@vsb.bc.ca)) if you are able to contribute your time and energy to the Maple Grove Soccer, Cross-Country Running, and/or Volleyball teams.

Time commitments may include (subject to number of volunteers): Morning practices (8-9am 1-2x/week), After-school games/meets (3:30-5pm, 1x/week) in September, October, and/or November.



Sun	Mon	Tue	Wed	Thu	Fri	Sat
	1	2	3	4	5	6
7	8	9	10	11	12	13
14	15 Book Fair Begins 	16	17	18	19 Pro-D No School	20
21	22	23 Photo Day 	24	25 School Carnival	26	27
28	29 Orange Shirt Day 	30 Day of Truth and Reconciliation— No School				

## After School Program—Tuesday

**WIZE**  
Computing Academy

# Afterschool Coding & Robotics Classes

Register here:



## PROGRAMS

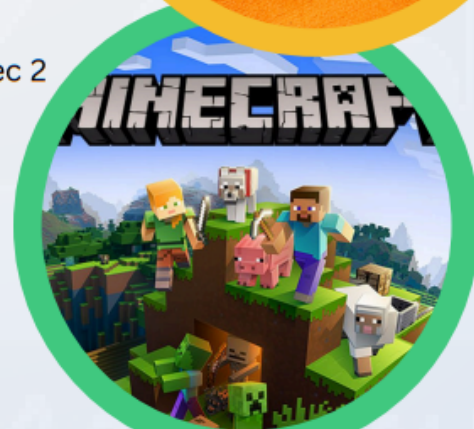
- Scratch- Animation, Coding and Game development (Grades K - 2)

**Scheduled days:** Tuesday**Scheduled dates:** Oct 7,14,21,28; Nov 4,18,25 ; Dec 2**Timings:** 3:00 PM to 4:30 PM**Price:** \$300 + taxes

- Minecraft Education - Coding and Modding (Grades 3 - 7)

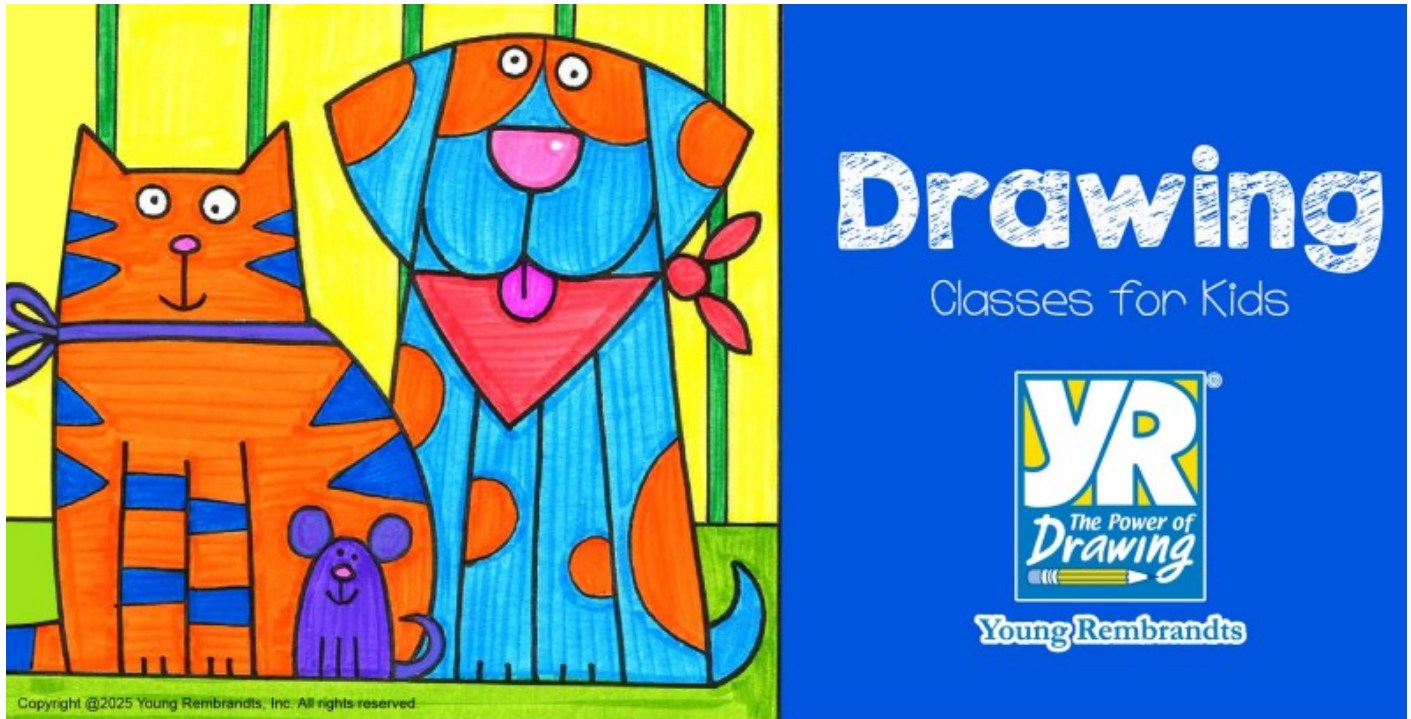
**Scheduled days:** Tuesday**Scheduled dates:** Oct 7,14,21,28; Nov 4,18,25 ; Dec 2**Timings:** 3:00 PM to 4:30 PM**Price:** \$300 + taxes

\*NOTE: \$25 Annual Membership Fees is applicable (one time only)

778-714-2266  
778-636-3044

info-nn@wizeacademy.com

## After School Program—Thursday



# Maple Grove Elementary

Grades 1st to 6th

Let's make this back-to-school season a masterpiece! Young Rembrandts' drawing lessons will sharpen their artistic skills. We'll tackle creative projects like a detailed a globetrotting koala, a playful nutcracker, and a dazzling Egyptian headdress that'll whisk your artist back in time. A fall-themed illustration will introduce them to warm and cool colour theory. With every lesson, your child will enhance their art skills, strategic thinking and self-expression. Creativity is calling—sign up now!



Thursdays

03:00 PM - 04:10 PM

09/25/2025 - 12/11/2025



\$ 282.00 (tax included)

12 Lessons



ENROLL ONLINE at

[www.youngrembrandts.com/](http://www.youngrembrandts.com/metrovancouver/)

[metrovanancouver/](http://metrovanancouver/)

## ALL NEW LESSONS EVERY SESSION!

YOUNG REMBRANDTS provides all classroom supplies and a trained instructor. Classes are held immediately after school inside the school. Parents are responsible for transportation at class end.

Young Rembrandts is an independent afterschool program and is not affiliated to the School Board.

[www.youngrembrandts.com/metrovancouver/](http://www.youngrembrandts.com/metrovancouver/) - 604-345-9053 - [metrovanancouver@youngrembrandts.com](mailto:metrovanancouver@youngrembrandts.com)

## After School Program—Friday



# VEMS Choral Program

## Maple Grove Elementary

### Fall 2025

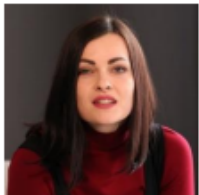


**Junior Choir:** Grades 1 to 3  
10 rehearsals and a concert (\$143)

**Senior Choir:** Grades 4 to 7  
10 rehearsals and a concert (\$156)

**Registration:** <https://vems.ca/signup.html>

What happens in Choir?	Junior Choir Schedule	Senior Choir Schedule
Students will learn healthy vocal production and musicianship while exploring diverse repertoire.	\$143 The Gym 2025-09-26 (Fri) - 1500-1600 2025-10-03 (Fri) - 1500-1600 2025-10-10 (Fri) - 1500-1600 2025-10-17 (Fri) - 1500-1600 2025-10-31 (Fri) - 1500-1600 2025-11-07 (Fri) - 1500-1600 2025-11-14 (Fri) - 1500-1600 2025-11-28 (Fri) - 1500-1600 2025-12-05 (Fri) - 1500-1600 2025-12-12 (Fri) - 1500-1600	\$143 The Gym 2025-09-26 (Fri) - 1600-1700 2025-10-03 (Fri) - 1600-1700 2025-10-10 (Fri) - 1600-1700 2025-10-17 (Fri) - 1600-1700 2025-10-31 (Fri) - 1600-1700 2025-11-07 (Fri) - 1600-1700 2025-11-14 (Fri) - 1600-1700 2025-11-28 (Fri) - 1600-1700 2025-12-05 (Fri) - 1600-1700 2025-12-12 (Fri) - 1600-1700
At every rehearsal there is a professional pianist to help with live music making.		
Regular attendance is important; new songs are regularly introduced.		



### Your Conductor

Anna Shylova has been working with children singing and performing for over 20 years. Her favourite thing to do with her young choirs perform at concerts.

"Music listening, performance, and composition engage nearly every area of the brain ... and involve nearly every neural subsystem." – Daniel J. Levitin, *This is your Brain on Music*.

### Presented by ...

#### The Vancouver Extracurricular Music Society

- VEMS is a BC nonprofit society dedicated to bringing more music to more children.
- Financial assistance is available; please apply when registering
- VEMS is registered with the CRA and issues tax receipts. [www.vems.ca/donate/](http://www.vems.ca/donate/)
- 20 children need to be enrolled for the choir to run.
- Questions? Email [president@vems.ca](mailto:president@vems.ca)



After School Program—Friday

# FreeKick

PLAY PLAY PLAY!  
AFTER SCHOOL



## SOCCER @ MAPLE GROVE

FRIDAYS  
SEPT 26 - NOV 21

Boys & Girls Ages 5 - 12  
3:15 - 4:15pm



**REGISTER NOW!**

Early Bird Save \$10 before Sept 10th  
\$159 September 10th  
Includes: Timbits Uniform, Soccer Ball,  
Socks & Medal



[info@FreeKickFC.com](mailto:info@FreeKickFC.com)

**FreeKickFC.com**

## 2025-2026 School Calendar

# Maple Grove Elementary



Office: 604-713-5356

Absences: 604-713-5159 (Code 48)

Please state reason for absence

NS	No School for Students
----	------------------------

PD	Professional Day - Staff Only
----	-------------------------------

2:00	2:00 p.m. Dismissal - P/T Conference
------	--------------------------------------

**September**

Tue, 2 - First Day of School

Fri, 19 - Professional Day (No School)

Tue, 30 - National Day for Truth and Reconciliation Day (No School)

**October**

Mon, 13 - Thanksgiving Day (No School)

Tue, 21 - Parent-Teacher Conference (2:00 pm dismissal)

Thu, 23 - Parent-Teacher Conference (2:00 pm dismissal)

Fri, 24 - Professional Day (No School)

**November**

Tue, 11 - Remembrance Day (No School)

Fri, 21 - Professional Day (No School)

**December**

Wed, 17 - Written Update Goes Home

Mon, Dec 22 to Fri, Jan, 2 - Winter Vacation (No School)

**January**

Mon, 5 - Back to School

Mon, 19 - Professional Day (No School)

**February**

Fri, 13 - Professional Day (No School)

Mon, 16 - Family Day (No School)

**March**

Wed, 11 - Written Update Goes Home

Mon, 16 to Fri, 27 - Spring Break (No School)

Mon, 30 - Back to School

**April**

Fri, 3 - Good Friday (No School)

Mon, 6 - Easter Monday (No School)

Mon, 20 - Professional Day (No School)

Tue, 21 - Parent-Teacher Conference (2:00 pm dismissal)

Thu, 23 - Parent-Teacher Conference (2:00 pm dismissal)

**May**

Mon, 18 - Victoria Day (No School)

**June**

Wed, 24 - Summary of Learning Goes Home

Thu, 25 - Last Day for Students

Fri, 26 - Administrative Day (No School)

## September 2025

SUN	MON	TUE	WED	THU	FRI	SAT
	1 NS	2	3	4	5	6
7	8	9	10	11	12	13
14	15	16	17	18	19 PD NS	20
21	22	23	24	25	26	27
28	29	30 NS				

## February 2026

SUN	MON	TUE	WED	THU	FRI	SAT
1	2	3	4	5	6	7
8	9	10	11	12	13 PD NS	14
15	16 NS	17	18	19	20	21
22	23	24	25	26	27	28

## October 2025

SUN	MON	TUE	WED	THU	FRI	SAT
			1	2	3	4
5	6	7	8	9	10	11
12	13 NS	14	15	16	17	18
19	20	21 2:00	22	23 2:00	24 PD NS	25
26	27	28	29	30	31	

## March 2026

SUN	MON	TUE	WED	THU	FRI	SAT
1	2	3	4	5	6	7
8	9	10	11	12	13	14
15	16 NS	17 NS	18 NS	19 NS	20 NS	21
22	23 NS	24 NS	25 NS	26 NS	27 NS	28
29	30	31				

## November 2025

SUN	MON	TUE	WED	THU	FRI	SAT
						1
2	3	4	5	6	7	8
9	10	11 NS	12	13	14	15
16	17	18	19	20	21 PD NS	22
23	24	25	26	27	28	29
30						

## April 2026

SUN	MON	TUE	WED	THU	FRI	SAT
			1	2	3 NS	4
5	6 NS	7	8	9	10	11
12	13	14	15	16	17	18
19	20 PD NS	21 2:00	22	23 2:00	24	25
26	27	28	29	30		

## December 2025

SUN	MON	TUE	WED	THU	FRI	SAT
	1	2	3	4	5	6
7	8	9	10	11	12	13
14	15	16	17	18	19	20
21	22 NS	23 NS	24 NS	25 NS	26 NS	27
28	29 NS	30 NS	31 NS			

## May 2026

SUN	MON	TUE	WED	THU	FRI	SAT
					1	2
3	4	5	6	7	8	9
10	11	12	13	14	15	16
17	18 NS	19	20	21	22	23
24	25	26	27	28	29	30
31						

## January 2026

SUN	MON	TUE	WED	THU	FRI	SAT
				1 NS	2 NS	3
4	5	6	7	8	9	10
11	12	13	14	15	16	17
18	19 PD NS	20	21	22	23	24
25	26	27	28	29	30	31

## June 2026

SUN	MON	TUE	WED	THU	FRI	SAT
	1	2	3	4	5	6
7	8	9	10	11	12	13
14	15	16	17	18	19	20
21	22	23	24	25	26 NS	27
28	29 NS	30 NS				