

01 Welcome to Begbie!



PHOTO BY © Audio-Visual Services
Vancouver School Board

Seismic Mitigation Public Information Session

The Begbie Elementary School renewal project is a high priority for the provincial Seismic Mitigation Program.

We invite you to review the material, ask questions and provide your comments.

Representatives from the Vancouver Project Office and the Vancouver School Board are available to answer your questions and listen to your comments.



02 School Catchment & Program



- Current School Capacity: 457
(38K, 416 Grades 1-7)
- Proposed School Capacity: 340
(40K, 300 Grades 1-7)
- Out-of-School Care on site
- 15% Neighborhood Learning Centre space will be part of the new replacement school.

03 Existing Building Analysis

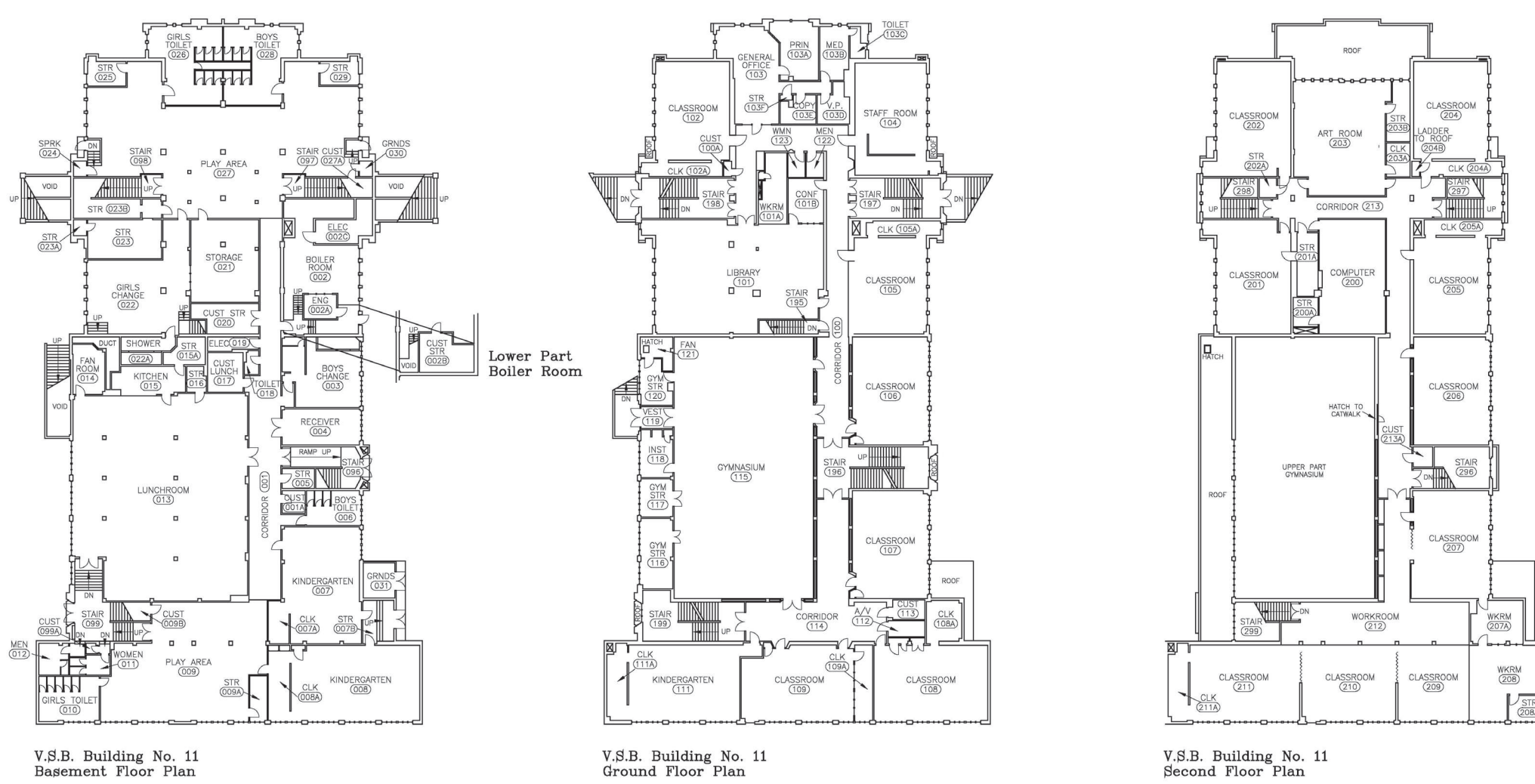


Sir Matthew Begbie Elementary was originally constructed in 1922 and had a major addition to the south in 1949. The original north portion is referred to as “Block 1” and the south addition as “Block 2”.

Both Block 1 & 2 have High Seismic Risk (H1) and do not meet current seismic standards.

The existing school is not universally accessible.

The existing school building systems are past their service life.



04 Site Analysis

Retain existing building during construction

Existing Play Area

Retain existing trees to greatest extent possible

Retain Playing field in existing location



Diagrammatic Site Section

Site has a 7m slope down from West to East

05 Endorsed Option: Full Replacement



Gross Area: 3,174m²
Total Budget: \$22,410,450

- Location is alongside existing school
- Building footprint and site impact minimized
- Existing play field will be maintained
- Most cost effective option
- Will feature communal multipurpose spaces
- Will feature clear interior and exterior sight lines
- As the existing school will remain for the duration of the construction, there is no need for temporary accommodation.